

**TPS3808G25DBVTG4**



N/A  
IC VOLT SUPERVISOR 2.5V SOT-23-6  
Lead free / RoHS Compliant  
Integrated Circuits (ICs)

**Buy Now**

**Out Stock**

**0 pcs**

Minimum:1

Multiples:1

Manufacturer lead time 10 weeks

Part No. TPS3808G25DBVTG4 Is this a common-used part? : Yes  
Shipped from : HK or Singapore warehouse  
Same model may have multiple batches, images only for reference.  
ECAD Models : Contact us to get  
Email:sales@zeanoit.com

Shopping Process



**Confirm the product**



**submit the order**



**payment**



**wait for delivery**



**receive the goods**

Specifications

<b>Voltage - Threshold:</b>	2.33V
<b>Type:</b>	Simple Reset/Power-On Reset
<b>Supplier Device Package:</b>	SOT-23-6
<b>Series:</b>	-
<b>Reset Timeout:</b>	Adjustable/Selectable
<b>Reset:</b>	Active Low
<b>Packaging:</b>	Tape & Reel (TR)
<b>Package / Case:</b>	SOT-23-6
<b>Output:</b>	Open Drain or Open Collector
<b>Operating Temperature:</b>	-40°C ~ 125°C (TJ)
<b>Number of Voltages Monitored:</b>	1
<b>Mounting Type:</b>	Surface Mount

Related products



**TPS3808G30DBVR**  
IC VOLT SUPERVISOR 3.0V SOT23-6  
[N/A](#)

**RFQ**



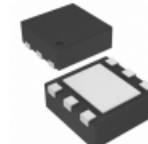
**TPS3808G19DBVR**  
IC VOLT SUPERVISOR 1.9V SOT-23-6  
[N/A](#)

**RFQ**



**TPS3808G19DBVT**  
IC VOLT SUPERVISOR 1.9V SOT23-6  
[N/A](#)

**RFQ**



**TPS3808G25DRVR**  
IC VOLT SUPERVISOR 2.5V 6SON  
[N/A](#)

**RFQ**



**TPS3808G25DRVT**  
IC VOLT SUPERVISOR 2.5V 6SON  
[N/A](#)

**RFQ**



**TPS3808G25DBVR**  
IC VOLT SUPERVISOR 2.5V SOT23-6  
[N/A](#)

**RFQ**



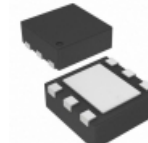
**TPS3808G25DBVRG4**  
IC VOLT SUPERVISOR 2.5V SOT-23-6  
[N/A](#)

**RFQ**



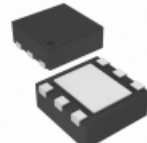
**TPS3808G25DBVT**  
IC VOLT SUPERVISOR 2.5V SOT23-6  
[N/A](#)

**RFQ**



**TPS3808G25DRVRG4**  
IC VOLT SUPERVISOR 2.5V 6SON  
[N/A](#)

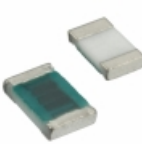
**RFQ**



**TPS3808G25DRVTG4**  
IC VOLT SUPERVISOR 2.5V 6SON  
[N/A](#)

**RFQ**

Guess You May Looking For



**RP2012T-R10-G**  
RES SMD 0.1 OHM 2% 1/3W 0805  
[Susumu](#)

**RFQ**



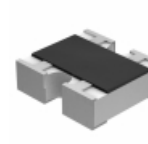
**RG2012P-2370-W-T1**  
RES SMD 237 OHM 0.05% 1/8W 0805  
[Susumu](#)

**RFQ**



**RG3216V-1022-C-T5**  
RES SMD 10.2KOHM 0.25% 1/4W 1206  
[Susumu](#)

**RFQ**



**CRA06S04316K0JTA**  
RES ARRAY 2 RES 16K OHM 0606  
[Vishay Dale](#)

**RFQ**



**4612X-102-680LF**  
RES ARRAY 6 RES 68 OHM 12SIP  
[Bourns Inc.](#)

**RFQ**



**RNF14DTD10R0**  
RES 10 OHM 1/4W .5% AXIAL  
[Stackpole Electronics Inc.](#)

**RFQ**



**ASR14JA6K20**  
RES 6.2K OHM 1/4W 5% AXIAL  
[Stackpole Electronics Inc.](#)

**RFQ**



**CMF60113K86FKEB**  
RES 113.86K OHM 1W 1% AXIAL  
[Vishay Dale](#)

**RFQ**



**RN55C2741FRE6**  
RES 2.74K OHM 1/8W 1% AXIAL  
[Vishay Dale](#)

**RFQ**



**RN55C2643BR36**  
RES 264K OHM 1/8W .1% AXIAL  
[Vishay Dale](#)

**RFQ**