

BR95040-WMN6TP


LAPIS Semiconductor
 IC EEPROM 4KBIT 5MHZ 8SOP
 Lead free / RoHS Compliant
 Integrated Circuits (ICs)

[BR95040-WMN6TP.pdf](#)

Buy Now

Out Stock

0 pcs

Minimum:1

Multiples:100

Manufacturer lead time 10 weeks

part#BR95040-WMN6TP is available, see description of BR95040-WMN6TP as below .
 use the request quote form to request BR95040-WMN6TP price and lead time.
 Buy Electronic Components at zeanoit.com .we are an independent distributor of
 electronic components with extensive inventory in stock.
 The price and lead time for BR95040-WMN6TP depending on the quantity required,
 availability and warehouse location.Contact us today and our sales team will send you
 quotation soon.
 Email: sales@zeanoit.com

Shopping Process

1

Confirm the product

2

submit the order

3

payment

4

wait for delivery

5

receive the goods

Specifications

Voltage - Supply:	2.5 V ~ 5.5 V
Supplier Device Package:	8-SO
Speed:	5MHz
Series:	-
Packaging:	Tape & Reel (TR)
Package / Case:	8-SOIC (0.154", 3.90mm Width)
Operating Temperature:	-40°C ~ 85°C (TA)
Memory Type:	Non-Volatile
Memory Size:	4Kb (512 x 8)
Memory Format:	EEPROM
Interface:	SPI Serial

Related products



BR95040-WDW6TP
 IC EEPROM 4KBIT 5MHZ 8TSSOP
[Rohm Semiconductor](#)

RFQ



BR95040-WDS6TP
 IC EEPROM 4KBIT 5MHZ 8TSSOP
[Rohm Semiconductor](#)

RFQ



BR95160-RDW6TP
 IC EEPROM 16KBIT 2MHZ 8TSSOP
[Rohm Semiconductor](#)

RFQ



BR95080-WMN6TP
 IC EEPROM 8KBIT 5MHZ 8SO
[Rohm Semiconductor](#)

RFQ



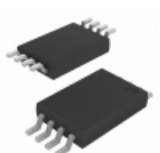
BR95080-RMN6TP
 IC EEPROM 8KBIT 2MHZ 8SOIC
[Rohm Semiconductor](#)

RFQ



BR93LL46FV-E2
[ROHM](#)

RFQ



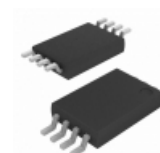
BR95020-WDW6TP
 IC EEPROM 2KBIT 5MHZ 8TSSOP
[Rohm Semiconductor](#)

RFQ



BR95010-WMN6TP
 IC EEPROM 1KBIT 5MHZ 8SO
[Rohm Semiconductor](#)

RFQ



BR95080-RDW6TP
 IC EEPROM 8KBIT 2MHZ 8TSSOP
[Rohm Semiconductor](#)

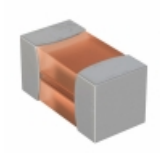
RFQ



BR95080-WDW6TP
 IC EEPROM 8KBIT 5MHZ 8TSSOP
[Rohm Semiconductor](#)

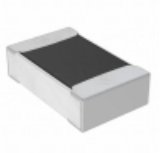
RFQ

Guess You May Looking For



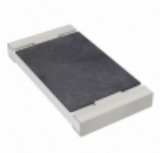
504L50R0FTNCFT
 RES SMD 50 OHM 1% 1/8W 0402
[American Technical Ceramics](#)

RFQ



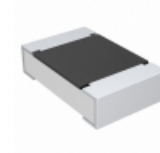
RGC0805FTC95K3
 RES SMD 95.3K OHM 1% 1/8W 0805
[Stackpole Electronics Inc.](#)

RFQ



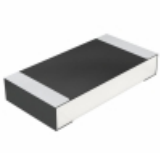
AC2010FK-0738R3L
 RES SMD 38.3 OHM 1% 3/4W 2010
[Yageo](#)

RFQ



CRCW080522K1FKEB
 RES SMD 22.1K OHM 1% 1/8W 0805
[Vishay Dale](#)

RFQ



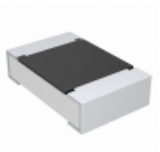
CRCW12064R30FNEA
 RES SMD 4.3 OHM 1% 1/4W 1206
[Vishay Dale](#)

RFQ



RT0402DRE07120RL
 RES SMD 120 OHM 0.5% 1/16W 0402
[Yageo](#)

RFQ



CRCW080524R0JNTB
 RES SMD 24 OHM 5% 1/8W 0805
[Vishay Dale](#)

RFQ



AT0402DRD07768RL
 RES SMD 768 OHM 0.5% 1/16W 0402
[Yageo](#)

RFQ



CRCW040254K9DKEEP
 RES SMD 54.9KOHM 0.5% 1/16W 0402
[Vishay Dale](#)

RFQ



CRCW080526K1DKTAP
 RES SMD 26.1K OHM 0.5% 1/8W 0805
[Vishay Dale](#)

RFQ