

## MC68376BAMAB20



[NXP Semiconductors / Freescale](#)

IC MCU 32BIT ROMLESS 160QFP

Lead free / RoHS Compliant

Integrated Circuits (ICs)

[1.MC68376BAMAB20.pdf](#)

[2.MC68376BAMAB20.pdf](#)

[Buy Now](#)

We can supply NXP Semiconductors / Freescale MC68376BAMAB20, use the request quote form to request MC68376BAMAB20 price, NXP Semiconductors / Freescale Datasheet PDF and lead time. Zeanoit.com is a professional electronic components distributor. With 3+ Million line items of available electronic components can ship in short lead-time, over 250 thousand part numbers of electronic components in stock for immediately delivery, which may include part number MC68376BAMAB20. The price and lead time for MC68376BAMAB20 depending on the quantity required, availability and warehouse location.

### Shopping Process



**1**  
Confirm the product



**2**  
submit the order



**3**  
payment



**4**  
wait for delivery



**5**  
receive the goods

### Specifications

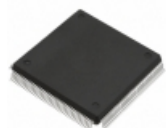
<b>Voltage - Supply (Vcc/Vdd):</b>	4.75 V ~ 5.25 V
<b>Supplier Device Package:</b>	160-QFP (28x28)
<b>Speed:</b>	20MHz
<b>Series:</b>	M683xx
<b>RAM Size:</b>	7.5K x 8
<b>Program Memory Type:</b>	ROMless
<b>Program Memory Size:</b>	-
<b>Peripherals:</b>	POR, PWM, WDT
<b>Packaging:</b>	Tray
<b>Package / Case:</b>	160-BQFP
<b>Oscillator Type:</b>	External
<b>Operating Temperature:</b>	-40°C ~ 125°C (TA)
<b>Number of I/O:</b>	18
<b>EEPROM Size:</b>	-
<b>Data Converters:</b>	A/D 16x10b
<b>Core Size:</b>	32-Bit
<b>Core Processor:</b>	CPU32
<b>Connectivity:</b>	CAN, EBI/EMI, SCI, SPI

### Related products



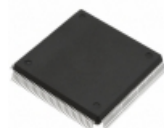
**MC68360ZQ25VLR2**  
IC MPU M683XX 25MHZ 357BGA  
[NXP USA Inc.](#)

[RFQ](#)



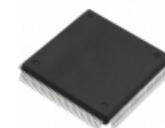
**MC68376BGCFT20**  
IC MCU 32BIT ROMLESS 160QFP  
[NXP USA Inc.](#)

[RFQ](#)



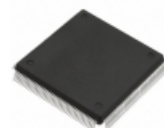
**MC68376BACFT20**  
IC MCU 32BIT ROMLESS 160QFP  
[NXP USA Inc.](#)

[RFQ](#)



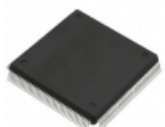
**MC68376BGCAB20**  
IC MCU 32BIT ROMLESS 160QFP  
[NXP USA Inc.](#)

[RFQ](#)



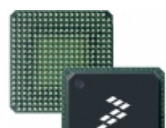
**MC68376BACAB25**  
IC MCU 32BIT ROMLESS 160QFP  
[NXP USA Inc.](#)

[RFQ](#)



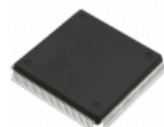
**MC68376BAVAB25**  
IC MCU 32BIT ROMLESS 160QFP  
[NXP USA Inc.](#)

[RFQ](#)



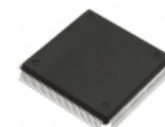
**MC68360ZQ33L**  
IC MPU M683XX 33MHZ 357BGA  
[NXP USA Inc.](#)

[RFQ](#)



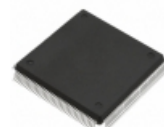
**MC68376BACAB20**  
IC MCU 32BIT ROMLESS 160QFP  
[NXP USA Inc.](#)

[RFQ](#)



**MC68376BGCAB25**  
IC MCU 32BIT ROMLESS 160QFP  
[NXP USA Inc.](#)

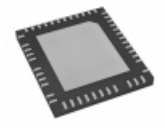
[RFQ](#)



**MC68376BAVAB20**  
IC MCU 32BIT ROMLESS 160QFP  
[NXP USA Inc.](#)

[RFQ](#)

### Guess You May Looking For



**LT3797EUKG#TRPBF**  
IC LED DRIVER CTRLR DIM 52QFN  
[Linear Technology](#)

[RFQ](#)



**SIP4612ADVP-T1-E3**  
IC LOAD SW HISIDE 1A SC75-6  
[Vishay Siliconix](#)

[RFQ](#)



**MAX16997AAUA+**  
IC TIMER WATCHDOG 8-UMAX  
[Maxim Integrated](#)

[RFQ](#)



**XC6123C318ER-G**  
IC WATCHDOG TIMER 6-USP  
[Torex Semiconductor Ltd](#)

[RFQ](#)



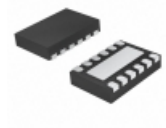
**VRE117MA-7**  
IC VREF SERIES 3V 14CDIP  
[Apex Microtechnology](#)

[RFQ](#)



**AD5808BCBZ-REEL7**  
IC REFERENCE  
[Analog Devices Inc.](#)

[RFQ](#)



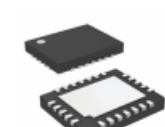
**UCC28230DRNT**  
IC REG CTRLR MULT TOP 12-SOEN  
[Texas Instruments](#)

[RFQ](#)



**LM2576-12WU**  
IC REG BUCK 12V 3A TO263-5  
[Microchip Technology](#)

[RFQ](#)



**LTC3118IUFD#TRPBF**  
IC REG BCK/BST ADJ 2A SYNC 24QFN  
[Linear Technology](#)

[RFQ](#)



**SIP21106DR-285-E3**  
IC REG LDO 2.85V 0.15A SC70-5  
[Vishay Siliconix](#)

[RFQ](#)