

MAX4211AEUE+T



Maxim Integrated

IC CURRENT MONITOR 1.5% 16TSSOP

Lead free / RoHS Compliant

Integrated Circuits (ICs)

[1.MAX4211AEUE+T.pdf](#)

[2.MAX4211AEUE+T.pdf](#)

Buy Now

Out Stock

0 pcs

Minimum:1

Multiples:100

Manufacturer lead time 10 weeks

part#MAX4211AEUE+T is available, see description of MAX4211AEUE+T as below .

use the request quote form to request MAX4211AEUE+T price and lead time.

Buy Electronic Components at zeanoit.com .we are an independent distributor of electronic components with extensive inventory in stock.

The price and lead time for MAX4211AEUE+T depending on the quantity required, availability and warehouse location.Contact us today and our sales team will send you quotation soon.

Email: sales@zeanoit.com

Shopping Process

1

Confirm the product

2

submit the order

3

payment

4

wait for delivery

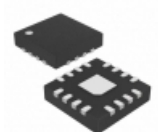
5

receive the goods

Specifications

Voltage - Input:	4 V ~ 28 V
Supplier Device Package:	16-TSSOP
Series:	-
Sensing Method:	High-Side
Packaging:	Tape & Reel (TR)
Package / Case:	16-TSSOP (0.173", 4.40mm Width)
Operating Temperature:	-40°C ~ 85°C
Mounting Type:	Surface Mount
Function:	Current Monitor
Current - Output:	-
Accuracy:	±0.5%

Related products

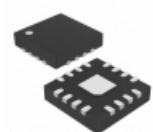


MAX4211BETE

IC CURRENT MONITOR 1.5% 16TQFN

[Maxim Integrated](#)

RFQ

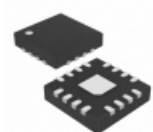


MAX4211CETE+

IC CURRENT MONITOR 1.5% 16TQFN

[Maxim Integrated](#)

RFQ

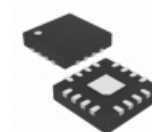


MAX4211AETE-T

IC CURRENT MONITOR 1.5% 16TQFN

[Maxim Integrated](#)

RFQ



MAX4211AETE

IC CURRENT MONITOR 1.5% 16TQFN

[Maxim Integrated](#)

RFQ

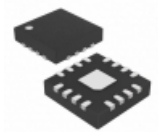


MAX4211

in stock

[MAXIM](#)

RFQ



MAX4211BETE+T

IC CURRENT MONITOR 1.5% 16TQFN

[Maxim Integrated](#)

RFQ



MAX4211BEUE+T

IC CURRENT MONITOR 1.5% 16TSSOP

[Maxim Integrated](#)

RFQ

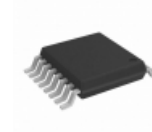


MAX4211AEUE+

IC CURRENT MONITOR 1.5% 16TSSOP

[Maxim Integrated](#)

RFQ



MAX4211BEUE+

IC CURRENT MONITOR 1.5% 16TSSOP

[Maxim Integrated](#)

RFQ



MAX4210FEUA+T

IC CURRENT MONITOR 1.5% 8MSOP

[Maxim Integrated](#)

RFQ

Guess You May Looking For



RT0805CRB07174KL

RES SMD 174K OHM 0.25% 1/8W 0805

[Yageo](#)

RFQ



RT0805CRB0734K8L

RES SMD 34.8KOHM 0.25% 1/8W 0805

[Yageo](#)

RFQ

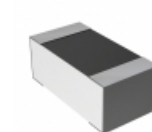


RT0805CRB0768R1L

RES SMD 68.1 OHM 0.25% 1/8W 0805

[Yageo](#)

RFQ

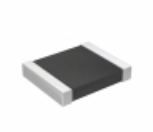


CPF0603B8K06E1

RES SMD 8.06KOHM 0.1% 1/16W 0603

[TE Connectivity Passive Product](#)

RFQ

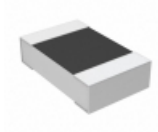


RT1210BRD0747R5L

RES SMD 47.5 OHM 0.1% 1/4W 1210

[Yageo](#)

RFQ

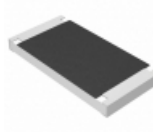


CPF0805B215RE1

RES SMD 215 OHM 0.1% 1/10W 0805

[TE Connectivity Passive Product](#)

RFQ

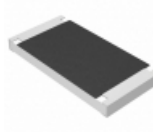


ERJ-S1TF1400U

RES SMD 140 OHM 1% 1W 2512

[Panasonic Electronic Components](#)

RFQ

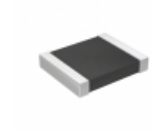


ERJ-S1TF20R5U

RES SMD 20.5 OHM 1% 1W 2512

[Panasonic Electronic Components](#)

RFQ



RT1210BRD0756K2L

RES SMD 56.2K OHM 0.1% 1/4W 1210

[Yageo](#)

RFQ



RG3216P-1371-B-T1

RES SMD 1.37K OHM 0.1% 1/4W 1206

[Susumu](#)

RFQ