

## LFE3-35EA-6FTN256I



### Lattice Semiconductor

IC FPGA 133 I/O 256FTBGA  
Lead free / RoHS Compliant  
Integrated Circuits (ICs)

- [1.LFE3-35EA-6FTN256I.pdf](#)
- [2.LFE3-35EA-6FTN256I.pdf](#)

[Buy Now](#)

#### Out Stock

0 pcs

Minimum:1

Multiples:100

Manufacturer lead time 10 weeks

part#LFE3-35EA-6FTN256I is available, see description of LFE3-35EA-6FTN256I as below .

use the request quote form to request LFE3-35EA-6FTN256I price and lead time. Buy Electronic Components at zeanoit.com .we are an independent distributor of electronic components with extensive inventory in stock.

The price and lead time for LFE3-35EA-6FTN256I depending on the quantity required, availability and warehouse location.Contact us today and our sales team will send you quotation soon.

Email: sales@zeanoit.com

### Shopping Process

1

Confirm the product

2

submit the order

3

payment

4

wait for delivery

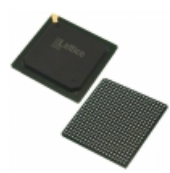
5

receive the goods

### Specifications

|  |                    |
|--|--------------------|
| <b>Voltage - Supply:</b>               | 1.14 V ~ 1.26 V    |
| <b>Total RAM Bits:</b>                 | 1358848            |
| <b>Supplier Device Package:</b>        | 256-FTBGA (17x17)  |
| <b>Series:</b>                         | ECP3               |
| <b>Package / Case:</b>                 | 256-BGA            |
| <b>Operating Temperature:</b>          | -40°C ~ 100°C (TJ) |
| <b>Number of Logic Elements/Cells:</b> | 33000              |
| <b>Number of LABs/CLBs:</b>            | 4125               |
| <b>Number of I/O:</b>                  | 133                |
| <b>Mounting Type:</b>                  | Surface Mount      |

### Related products



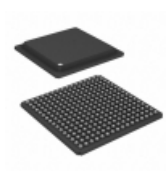
**LFE3-35EA-6LFN484I**  
IC FPGA 295 I/O 484FBGA  
[Lattice Semiconductor Corporation](#)

RFQ



**LFE3-35EA-6FN672I**  
IC FPGA 310 I/O 672FBGA  
[Lattice Semiconductor Corporation](#)

RFQ



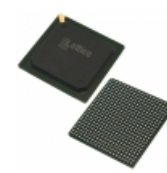
**LFE3-35EA-6LFTN256C**  
IC FPGA 133 I/O 256FTBGA  
[Lattice Semiconductor Corporation](#)

RFQ



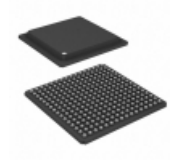
**LFE3-35EA-6LFN672C**  
IC FPGA 310 I/O 672FBGA  
[Lattice Semiconductor Corporation](#)

RFQ



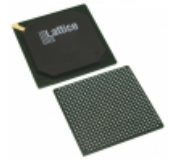
**LFE3-35EA-6FN484C**  
IC FPGA 295 I/O 484FBGA  
[Lattice Semiconductor Corporation](#)

RFQ



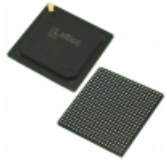
**LFE3-35EA-6FTN256C**  
IC FPGA 133 I/O 256FTBGA  
[Lattice Semiconductor Corporation](#)

RFQ



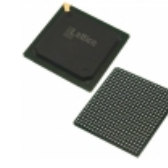
**LFE3-35EA-6FN672C**  
IC FPGA 310 I/O 672FBGA  
[Lattice Semiconductor Corporation](#)

RFQ



**LFE3-35EA-6LFN484C**  
IC FPGA 295 I/O 484FBGA  
[Lattice Semiconductor Corporation](#)

RFQ



**LFE3-35EA-6FN484I**  
IC FPGA 295 I/O 484FBGA  
[Lattice Semiconductor Corporation](#)

RFQ



**LFE3-35EA-6LFN672I**  
IC FPGA 310 I/O 672FBGA  
[Lattice Semiconductor Corporation](#)

RFQ

### Guess You May Looking For



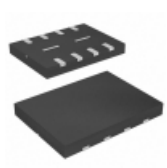
**CY7C0852AV-133AXC**  
IC SRAM 4.5MBIT 133MHZ 176TQFP  
[Cypress Semiconductor Corp](#)

RFQ



**CY62128DV30LL-70ZI**  
IC SRAM 1MBIT 70NS 32TSOP  
[Cypress Semiconductor Corp](#)

RFQ



**W25Q16DWUUIG TR**  
IC FLASH 16MBIT 104MHZ 8USON  
[Winbond Electronics](#)

RFQ



**VIPER27HN**  
IC OFFLINE CONV PWM OVP 7DIP  
[STMicroelectronics](#)

RFQ



**PKS604YN**  
IC OFFLINE SWIT OTP OCP HV TO220  
[Power Integrations](#)

RFQ



**UCC28C42DG4**  
IC OFFLINE CTRLR PWM UVLO 8SOIC  
[Texas Instruments](#)

RFQ



**HR1000AGS-Z**  
IC OFF-LINE CNTRLR 16SOIC  
[Monolithic Power Systems Inc.](#)

RFQ



**MCP1407T-E/MF**  
IC MOSFET DRIVER 6A HS 8DFN  
[Microchip Technology](#)

RFQ



**MIC4124YML-TR**  
IC DRIVER MOSFET 3A DUAL 8-MLF  
[Microchip Technology](#)

RFQ