

## 7052L20PQFG



### IDT (Integrated Device Technology)

IC SRAM 16KBIT 20NS 132QFP  
Lead free / RoHS Compliant  
Integrated Circuits (ICs)

[1.7052L20PQFG.pdf](#)

[2.7052L20PQFG.pdf](#)

[Buy Now](#)

Images are for reference only.

See Product Specifications for product details.

If you are interested to buy 7052L20PQFG, Just Email us.

Sales@zeanoit.com

our sales team will reply you within 24 hours

### Shopping Process



Confirm the product



submit the order



payment



wait for delivery



receive the goods

### Specifications

<b>Voltage - Supply:</b>	4.5 V ~ 5.5 V
<b>Supplier Device Package:</b>	132-PQFP (24.13x24.13)
<b>Speed:</b>	20ns
<b>Series:</b>	-
<b>Packaging:</b>	Tray
<b>Package / Case:</b>	132-BQFP Bumped
<b>Operating Temperature:</b>	0°C ~ 70°C (TA)
<b>Memory Type:</b>	Volatile
<b>Memory Size:</b>	16Kb (2K x 8)
<b>Memory Format:</b>	SRAM
<b>Interface:</b>	Parallel

### Related products



#### 7052L20PQF

IC SRAM 16KBIT 20NS 132QFP  
[IDT, Integrated Device Technology Inc](#)

RFQ



#### 7052L25PQF

IC SRAM 16KBIT 25NS 132QFP  
[IDT, Integrated Device Technology Inc](#)

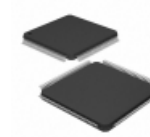
RFQ



#### 7052L25G

IC SRAM 16KBIT 25NS 108PGA  
[IDT, Integrated Device Technology Inc](#)

RFQ



#### 7052L20PFG

IC SRAM 16KBIT 20NS 120TQFP  
[IDT, Integrated Device Technology Inc](#)

RFQ



#### 7052L25PQFI

IC SRAM 16KBIT 25NS 132QFP  
[IDT, Integrated Device Technology Inc](#)

RFQ



#### 7052L20G

IC SRAM 16KBIT 20NS 108PGA  
[IDT, Integrated Device Technology Inc](#)

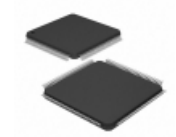
RFQ



#### 70527CLF

DUST CAP  
[Amphenol FCI](#)

RFQ



#### 7052L20PFG8

IC SRAM 16KBIT 20NS 120TQFP  
[IDT, Integrated Device Technology Inc](#)

RFQ



#### 7052L25PFGI

IC SRAM 16KBIT 25NS 120TQFP  
[IDT, Integrated Device Technology Inc](#)

RFQ

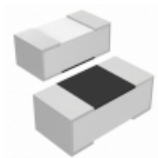


#### 7052L25PFGI8

IC SRAM 16KBIT 25NS 120TQFP  
[IDT, Integrated Device Technology Inc](#)

RFQ

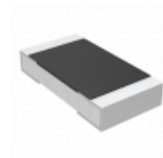
### Guess You May Looking For



#### MCR006YRTF1802

RES SMD 18K OHM 1% 1/20W 0201  
[Rohm Semiconductor](#)

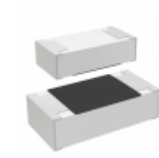
RFQ



#### AC1206FR-07140KL

RES SMD 140K OHM 1% 1/4W 1206  
[Yageo](#)

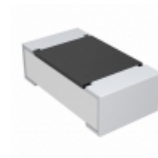
RFQ



#### CR0603-JW-162ELF

RES SMD 1.6K OHM 5% 1/10W 0603  
[Bourns Inc.](#)

RFQ



#### CRCW06036R49FNEB

RES SMD 6.49 OHM 1% 1/10W 0603  
[Vishay Dale](#)

RFQ



#### RR1220P-4640-D-M

RES SMD 464 OHM 0.5% 1/10W 0805  
[Susumu](#)

RFQ



#### AA0201FR-0791RL

RES SMD 91 OHM 1% 1/20W 0201  
[Yageo](#)

RFQ



#### ESR18EZPF7872

RES SMD 78.7K OHM 1% 1/3W 1206  
[Rohm Semiconductor](#)

RFQ



#### RT0402CRE0725R5L

RES SMD 25.50OHM 0.25% 1/16W 0402  
[Yageo](#)

RFQ



#### ERJ-S02F12R4X

RES SMD 12.4 OHM 1% 1/10W 0402  
[Panasonic Electronic Components](#)

RFQ



#### RT1206DRE07976KL

RES SMD 976K OHM 0.5% 1/4W 1206  
[Yageo](#)

RFQ