

MCF5206CAB16A



[NXP Semiconductors / Freescale](#)

IC MCU 32BIT ROMLESS 160QFP

Lead free / RoHS Compliant

Integrated Circuits (ICs)

[MCF5206CAB16A.pdf](#)

Buy Now

We can supply NXP Semiconductors / Freescale MCF5206CAB16A, use the request quote form to request MCF5206CAB16A price, NXP Semiconductors / Freescale Datasheet PDF and lead time. Zeano.com is a professional electronic components distributor. With 3+ Million line items of available electronic components can ship in short lead-time, over 250 thousand part numbers of electronic components in stock for immediately delivery, which may include part number MCF5206CAB16A. The price and lead time for MCF5206CAB16A depending on the quantity required, availability and warehouse location.

Shopping Process



Confirm the product



submit the order



payment



wait for delivery

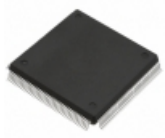


receive the goods

Specifications

Voltage - Supply (Vcc/Vdd):	4.75 V ~ 5.25 V
Supplier Device Package:	160-QFP (28x28)
Speed:	16MHz
Series:	MCF520x
RAM Size:	512 x 8
Program Memory Type:	ROMless
Program Memory Size:	-
Peripherals:	POR, WDT
Packaging:	Tray
Package / Case:	160-BQFP
Oscillator Type:	External
Operating Temperature:	-40°C ~ 85°C (TA)
Number of I/O:	8
EEPROM Size:	-
Data Converters:	-
Core Size:	32-Bit
Core Processor:	Coldfire V2
Connectivity:	I ² C, UART/USART

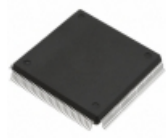
Related products



MCF5206ECAB40

IC MCU 32BIT ROMLESS 160QFP
[NXP USA Inc.](#)

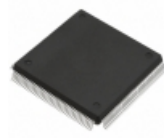
[RFQ](#)



MCF5206CAB25A

IC MCU 32BIT ROMLESS 160QFP
[NXP USA Inc.](#)

[RFQ](#)



MCF5206EAB40

IC MCU 32BIT ROMLESS 160QFP
[NXP USA Inc.](#)

[RFQ](#)



MCF5206AB25A

IC MCU 32BIT ROMLESS 160QFP
[NXP USA Inc.](#)

[RFQ](#)



MCF5206AB16A

IC MCU 32BIT ROMLESS 160QFP
[NXP USA Inc.](#)

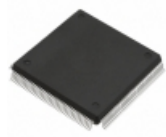
[RFQ](#)



MCF51QU64VLF

IC MCU 32BIT 64KB FLASH 48LQFP
[NXP USA Inc.](#)

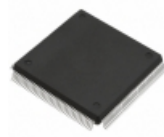
[RFQ](#)



MCF5206EAB54

IC MCU 32BIT ROMLESS 160QFP
[NXP USA Inc.](#)

[RFQ](#)



MCF5206AB33A

IC MCU 32BIT ROMLESS 160QFP
[NXP USA Inc.](#)

[RFQ](#)



MCF5206E

in stock
[FREESCALE](#)

[RFQ](#)

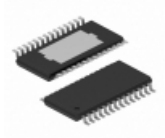


MCF51QW256CHS

IC MCU 32BIT 256KB FLASH 44LGA
[NXP USA Inc.](#)

[RFQ](#)

Guess You May Looking For



TLC5942PWPR

IC LED DRIVER LIN 50MA 28HTSSOP
[Texas Instruments](#)

[RFQ](#)



STCC05-BD4

IC CTRLR AC PWR APPLIANCE 20DIP
[STMicroelectronics](#)

[RFQ](#)



LTC1966CMS8#TRPBF

IC PREC RMS/DC CONV MCRPWR 8MSOP
[Linear Technology](#)

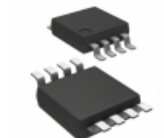
[RFQ](#)



MAX6388XS18D2-T

IC MPU/RESET CIRC 1.80V SC70-4
[Maxim Integrated](#)

[RFQ](#)



DS1705EUA

IC MICROMONITOR 5V 5% 8-USOP
[Maxim Integrated](#)

[RFQ](#)



LTC3727EG#PBF

IC REG CTRLR BUCK 28SSOP
[Linear Technology](#)

[RFQ](#)



S-8353H50UA-IXJT2G

IC REG BOOST 5V 0.3A SOT89-3
[SII Semiconductor Corporation](#)

[RFQ](#)



AZ1117H-1.5TRE1

IC REG LDO 1.5V 1A SOT223
[Diodes Incorporated](#)

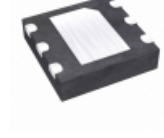
[RFQ](#)



AP7315-30W5-7

IC REG LDO 3V 0.15A SOT25
[Diodes Incorporated](#)

[RFQ](#)



MAX15006BATT/V+T

IC REG LDO 5V 50MA 6TDFN
[Maxim Integrated](#)

[RFQ](#)