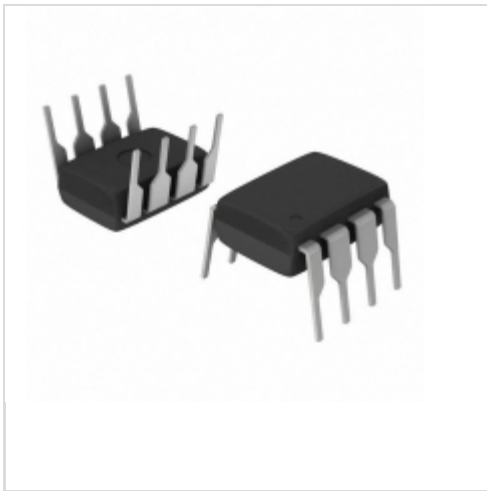



XC17256ELPD8I



Xilinx

IC PROM SER I-TEMP 256K 8-DIP
Contains lead / RoHS non-compliant
Integrated Circuits (ICs)

 [XC17256ELPD8I.pdf](#)

 [Buy Now](#)

We can supply XC17256ELPD8I, use the request quote form to request XC17256ELPD8I price and lead time. Zeano is a professional electronic components distributor. With 3+ Million line items of available electronic components can ship in short lead-time, over 250 thousand part numbers of electronic components in stock for immediately delivery, which may include part number XC17256ELPD8I. The price and lead time for XC17256ELPD8I depending on the quantity required and warehouse location. Contact us and our sales representative will provide you price. We look forward to work with you.

Shopping Process

1

Confirm the product

2

submit the order

3

payment

4

wait for delivery

5

receive the goods

Specifications

Voltage - Supply:	3 V ~ 3.6 V
Supplier Device Package:	8-PDIP
Series:	-
Programmable Type:	OTP
Packaging:	Tube
Package / Case:	8-DIP (0.300", 7.62mm)
Operating Temperature:	-40°C ~ 85°C
Memory Size:	256Kb

Related products



XC17256ELV08C0100

in stock
[XILINX](#)

RFQ



XC17256ELPD8C

IC 3V SER CFG PROM 256K 8-DIP
[Xilinx Inc.](#)

RFQ



XC17256EPC

[XILINX](#)

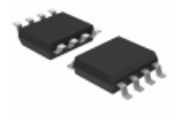
RFQ



XC17256EHC

in stock
[XILINX](#)

RFQ



XC17256ELV08I

IC PROM SER I-TEMP 256K 8-SOIC
[Xilinx Inc.](#)

RFQ



XC17256ELPC20C

IC PROM SER C-TEMP 256K 20-PLCC
[Xilinx Inc.](#)

RFQ



XC17256ELPC20I

IC PROM SER I-TEMP 256K 20-PLCC
[Xilinx Inc.](#)

RFQ



XC17256ELV08C

IC 3V SER CFG PROM 256K 8-SOIC
[Xilinx Inc.](#)

RFQ



XC17256EJC

in stock
[XILINX](#)

RFQ

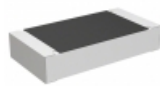


XC17256ELV08C

in stock
[XILINX](#)

RFQ

Guess You May Looking For



CRCW1206332KFHEAP

RES SMD 332K OHM 1% 1/4W 1206
[Vishay Dale](#)

RFQ



RG2012P-7680-B-T5

RES SMD 768 OHM 0.1% 1/8W 0805
[Susumu](#)

RFQ



RT0603CRD07107RL

RES SMD 107 OHM 0.25% 1/10W 0603
[Yageo](#)

RFQ



RT0603CRD071K78L

RES SMD 1.78K OHM 1/10W 0603
[Yageo](#)

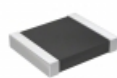
RFQ



RT1206CRE07390KL

RES SMD 390K OHM 0.25% 1/4W 1206
[Yageo](#)

RFQ



RT1210FRD0720K5L

RES SMD 20.5K OHM 1% 1/4W 1210
[Yageo](#)

RFQ



CRGH2010F26K1

RES SMD 26.1K OHM 1% 1W 2010
[TE Connectivity Passive Product](#)

RFQ



CRGH2010F53K6

RES SMD 53.6K OHM 1% 1W 2010
[TE Connectivity Passive Product](#)

RFQ



CRGH2010F60K4

RES SMD 60.4K OHM 1% 1W 2010
[TE Connectivity Passive Product](#)

RFQ



CRGH2010F71K5

RES SMD 71.5K OHM 1% 1W 2010
[TE Connectivity Passive Product](#)

RFQ