

## SSL5236TE/1Y



[NXP Semiconductors / Freescale](#)

IC LED DRIVER DIMMABLE 8HSO

Lead free / RoHS Compliant

Integrated Circuits (ICs)

**Buy Now**

part#SSL5236TE/1Y is available, see description of SSL5236TE/1Y as below .

use the request quote form to request SSL5236TE/1Y price and lead time.

Buy Electronic Components at zeanoit.com .we are an independent distributor of electronic components with extensive inventory in stock.

The price and lead time for SSL5236TE/1Y depending on the quantity required, availability and warehouse location.Contact us today and our sales team will send you quotation soon.

Email: sales@zeanoit.com

### Shopping Process

**1**

Confirm the product

**2**

submit the order

**3**

payment

**4**

wait for delivery

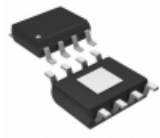
**5**

receive the goods

### Specifications

<b>Voltage - Supply (Min):</b>	9.9V
<b>Voltage - Supply (Max):</b>	16V
<b>Voltage - Output:</b>	-
<b>Type:</b>	AC DC Offline Switcher
<b>Topology:</b>	Step-Down (Buck), Step-Up (Boost)
<b>Supplier Device Package:</b>	8-HSO
<b>Series:</b>	-
<b>Packaging:</b>	Tape & Reel (TR)
<b>Package / Case:</b>	8-SOIC (0.154", 3.90mm Width) Exposed Pad
<b>Operating Temperature:</b>	-40°C ~ 160°C (TJ)
<b>Number of Outputs:</b>	1
<b>Mounting Type:</b>	Surface Mount
<b>Internal Switch(s):</b>	Yes
<b>Frequency:</b>	-
<b>Dimming:</b>	Triac
<b>Current - Output / Channel:</b>	450mA
<b>Applications:</b>	-

### Related products



**SSL5236BTE/1Y**  
IC LED DRIVER DIMMABLE 8SO  
[NXP USA Inc.](#)

RFQ



**SSL5235BTE**  
[NXP](#)

RFQ



**SSL5237TE/1**  
[NXP](#)

RFQ



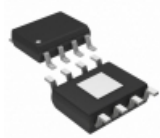
**SSL5237BTE**  
[NXP](#)

RFQ



**SSL5236TE**  
[NXP](#)

RFQ



**SSL5237BTE/1Y**  
IC LED DRIVER DIMMABLE 8HSO  
[NXP USA Inc.](#)

RFQ



**SSL5237TE/1Y**  
IC LED DRIVER DIMMABLE 8HSO  
[NXP USA Inc.](#)

RFQ



**SSL5237TE**  
[NXP](#)

RFQ



**SSL5236BTE**  
[NXP](#)

RFQ



**SSL5231T/1J**  
IC LED DRIVER DIMMABLE 8SO  
[NXP USA Inc.](#)

RFQ

### Guess You May Looking For



**HRG3216P-2800-D-T1**  
RES SMD 280 OHM 0.5% 1W 1206  
[Susumu](#)

RFQ



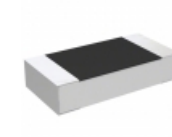
**HRG3216P-51R1-D-T1**  
RES SMD 51.1 OHM 0.5% 1W 1206  
[Susumu](#)

RFQ



**RG2012N-1272-W-T1**  
RES SMD 12.7KOHM 0.05% 1/8W 0805  
[Susumu](#)

RFQ



**RP73D2B221KBTF**  
RES SMD 221K OHM 0.1% 1/4W 1206  
[TE Connectivity Passive Product](#)

RFQ



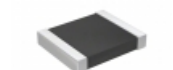
**RT1206WRB07261KL**  
RES SMD 261K OHM 0.05% 1/4W 1206  
[Yageo](#)

RFQ



**CSSH2728FT16L0**  
RES SMD 0.016 OHM 4W 2827 WIDE  
[Stackpole Electronics Inc.](#)

RFQ



**RT1210CRB0790K9L**  
RES SMD 90.9KOHM 0.25% 1/4W 1210  
[Yageo](#)

RFQ



**RT1206WRD07100RL**  
RES SMD 100 OHM 0.05% 1/4W 1206  
[Yageo](#)

RFQ



**RT0603WRB0722RL**  
RES SMD 22 OHM 0.05% 1/10W 0603  
[Yageo](#)

RFQ



**PTN1206E1302BST1**  
RES SMD 13K OHM 0.1% 0.4W 1206  
[Vishay Thin Film](#)

RFQ