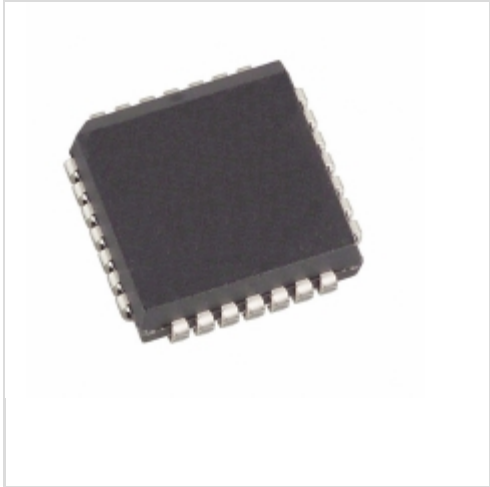


DS1212Q



Maxim Integrated

IC CONTROLLER NV 16-CHIP 28-PLCC
Contains lead / RoHS non-compliant
Integrated Circuits (ICs)

[DS1212Q.pdf](#)

Buy Now

Images are for reference only.

See Product Specifications for product details.

If you are interested to buy DS1212Q,Just Email us.

Sales@zeanoit.com

our sales team will reply you within 24 hours

Shopping Process

1

Confirm the product

2

submit the order

3

payment

4

wait for delivery

5

receive the goods

Specifications

Voltage - Supply:	4.75 V ~ 5.5 V
Supplier Device Package:	28-PLCC (11.51x11.51)
Series:	-
Packaging:	Tube
Package / Case:	28-LCC (J-Lead)
Operating Temperature:	0°C ~ 70°C
Controller Type:	Nonvolatile RAM

Related products



DS1211SN+T&R
IC CONTROLLER 8-CHIP NV 20-SOIC
[Maxim Integrated](#)

RFQ



DS1212QN
IC CONTROLLER NV 16CH IND 28PLCC
[Maxim Integrated](#)

RFQ



DS1212
[DALLAS](#)

RFQ



DS1212N
IC CONTROLLER NV 16-CHIP 28-DIP
[Maxim Integrated](#)

RFQ



DS1212+
IC CONTROLLER NV 16-CHIP 28-DIP
[Maxim Integrated](#)

RFQ



DS1213B
IC SMARTSOCKET 16K/64K 28-DIP
[Maxim Integrated](#)

RFQ



DS1213D
IC SMARTSOCKET 256K/1M 32-DIP
[Maxim Integrated](#)

RFQ



DS1213
[DS](#)

RFQ



DS1211SN+TR
in stock
[MAXIM](#)

RFQ



DS1213C
IC SMARTSOCKET 256K 28-DIP
[Maxim Integrated](#)

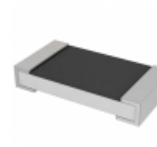
RFQ

Guess You May Looking For



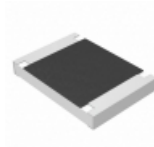
ESR25JZPJ130
RES SMD 13 OHM 5% 1/2W 1210
[Rohm Semiconductor](#)

RFQ



PT1206FR-7W0R62L
RES SMD 0.62 OHM 1% 1/2W 1206
[Yageo](#)

RFQ



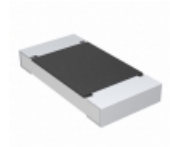
ERJ-S12J222U
RES SMD 2.2K OHM 5% 3/4W 1812
[Panasonic Electronic Components](#)

RFQ



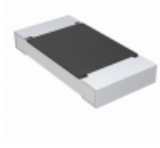
CRGH2010F20K5
RES SMD 20.5K OHM 1% 1W 2010
[TE Connectivity Passive Product](#)

RFQ



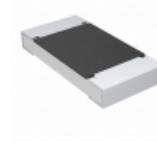
CRCW2010768KFCTF
RES SMD 768K OHM 1% 3/4W 2010
[Vishay Dale](#)

RFQ



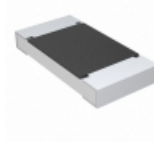
CRCW20108R25FNTF
RES SMD 8.25 OHM 1% 3/4W 2010
[Vishay Dale](#)

RFQ



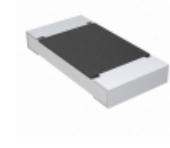
CRCW20109K76FKTF
RES SMD 9.76K OHM 1% 3/4W 2010
[Vishay Dale](#)

RFQ



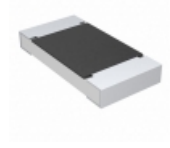
CRCW201015K0JNTF
RES SMD 15K OHM 5% 3/4W 2010
[Vishay Dale](#)

RFQ



CRCW201062K0JNTF
RES SMD 62K OHM 5% 3/4W 2010
[Vishay Dale](#)

RFQ



CRCW2010750KJNTF
RES SMD 750K OHM 5% 3/4W 2010
[Vishay Dale](#)

RFQ