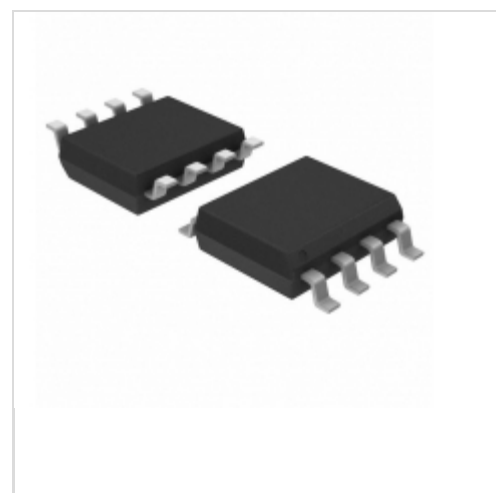


AT24C32AN-10SI-2.7

Microchip Technology

IC EEPROM 32KBIT 400KHZ 8SOIC
 Contains lead / RoHS non-compliant
 Integrated Circuits (ICs)

[AT24C32AN-10SI-2.7.pdf](#)

Buy Now

Images are for reference only.

See Product Specifications for product details.

If you are interested to buy AT24C32AN-10SI-2.7, Just Email us.

Sales@zeanoit.com

our sales team will reply you within 24 hours

Shopping Process

1

Confirm the product

2

submit the order

3

payment

4

wait for delivery

5

receive the goods

Specifications

Voltage - Supply:	2.7 V ~ 5.5 V
Supplier Device Package:	8-SOIC
Speed:	400kHz
Series:	-
Packaging:	Tube
Package / Case:	8-SOIC (0.154", 3.90mm Width)
Operating Temperature:	-40°C ~ 85°C (TA)
Memory Type:	Non-Volatile
Memory Size:	32Kb (4K x 8)
Memory Format:	EEPROM
Interface:	I ² C, 2-Wire Serial

Related products

AT24C32A-W1.8-11

Two-wire Serial EEPROM 32K (4096 x 8)
 64K (8192 x 8)

[ATMEL](#)

RFQ


AT24C32AN-10SQ-2.7

in stock

[ATMEL](#)

RFQ


AT24C32AN

in stock

[ATMEL](#)

RFQ


AT24C32AN-10SI-1.8

IC EEPROM 32KBIT 400KHZ 8SOIC

[Microchip Technology](#)

RFQ


AT24C32AN-10SI-1.8-T

IC EEPROM 32KBIT 400KHZ 8SOIC

[Microchip Technology](#)

RFQ


AT24C32AN-10SU-2.7

IC EEPROM 32KBIT 400KHZ 8SOIC

[Microchip Technology](#)

RFQ


AT24C32AN-10SE-2.7

in stock

[ATMEL](#)

RFQ


AT24C32AN-10SU-1.8

IC EEPROM 32KBIT 400KHZ 8SOIC

[Microchip Technology](#)

RFQ


AT24C32AN-10SI-2.7-T

IC EEPROM 32KBIT 400KHZ 8SOIC

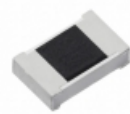
[Microchip Technology](#)

RFQ


AT24C32AN-10SU-1.8 SOP8

[ATMEL](#)

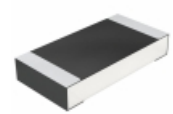
RFQ

Guess You May Looking For

ERJ-PB3B1302V

RES SMD 13K OHM 0.1% 1/5W 0603

[Panasonic Electronic Components](#)

RFQ


CRCW120616R2FKEA

RES SMD 16.2 OHM 1% 1/4W 1206

[Vishay Dale](#)

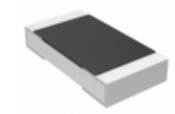
RFQ


RMCF0402JT120K

RES SMD 120K OHM 5% 1/16W 0402

[Stackpole Electronics Inc.](#)

RFQ


AC1206FR-07140KL

RES SMD 140K OHM 1% 1/4W 1206

[Yageo](#)

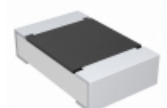
RFQ


SMM02070C1001FBP00

RES SMD 1K OHM 1% 1W MELF

[Vishay Beyschlag](#)

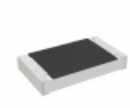
RFQ


CRCW080557R6FKEB

RES SMD 57.6 OHM 1% 1/8W 0805

[Vishay Dale](#)

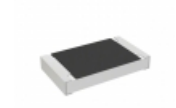
RFQ


RCS040230R1FKED

RES SMD 30.1 OHM 1% 1/5W 0402

[Vishay Dale](#)

RFQ


RCS040288R7FKED

RES SMD 88.7 OHM 1% 1/5W 0402

[Vishay Dale](#)

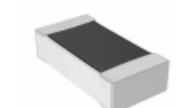
RFQ


CRCW0805100KDHTAP

RES SMD 100K OHM 0.5% 1/8W 0805

[Vishay Dale](#)

RFQ


RNCF0603BTC1K20

RES SMD 1.2K OHM 0.1% 1/10W 0603

[Stackpole Electronics Inc.](#)

RFQ