

MAX5904ESA+T



Maxim Integrated

IC HOT-SWAP CTRLR DUAL 8-SOIC

Lead free / RoHS Compliant

Integrated Circuits (ICs)

[1.MAX5904ESA+T.pdf](#)

[2.MAX5904ESA+T.pdf](#)

Buy Now

Out Stock

0 pcs

Minimum:1

Multiples:100

Manufacturer lead time 10 weeks

Images are for reference only.

See Product Specifications for product details.

If you are interested to buy MAX5904ESA+T,Just Email us.

Sales@zeanoit.com

our sales team will reply you within 24 hours

Shopping Process

1

Confirm the product

2

submit the order

3

payment

4

wait for delivery

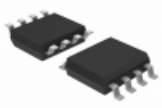
5

receive the goods

Specifications

Voltage - Supply:	1 V ~ 13.2 V
Type:	Hot Swap Controller, Sequencer
Supplier Device Package:	8-SOIC
Series:	VariableSpeed/BiLevel™
Programmable Features:	Circuit Breaker, Current Limit, Fault Timeout
Packaging:	Tape & Reel (TR)
Package / Case:	8-SOIC (0.154", 3.90mm Width)
Operating Temperature:	-40°C ~ 85°C
Number of Channels:	2
Mounting Type:	Surface Mount
Internal Switch(s):	No
Features:	Auto Retry, UVLO
Feature Pins:	ON
Current - Supply:	1.2mA
Current - Output (Max):	-
Applications:	PCI Express®

Related products



MAX5904USA+

IC HOT-SWAP CTRLR DUAL 8-SOIC

[Maxim Integrated](#)

RFQ



MAX5903NNEUT+T

IC HOT-SWAP CONTROLLER SOT23-6

[Maxim Integrated](#)

RFQ



MAX5904USA

in stock

[MAXIM](#)

RFQ



MAX5904ESA-T

[MAXIM](#)

RFQ



MAX5904USA+T

IC HOT-SWAP CTRLR DUAL 8-SOIC

[Maxim Integrated](#)

RFQ

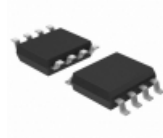


MAX5905

in stock

[MAXIM](#)

RFQ



MAX5904ESA+

IC HOT-SWAP CTRLR DUAL 8-SOIC

[Maxim Integrated](#)

RFQ



MAX5904

in stock

[MAXIM](#)

RFQ

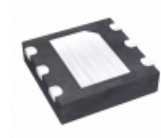


MAX5904ESA

in stock

[MAXIM](#)

RFQ



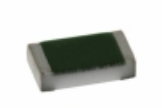
MAX5903NNETT+T

IC HOT-SWAP CONTROLLER 6-TDFN

[Maxim Integrated](#)

RFQ

Guess You May Looking For

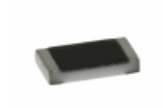


TNPW0603280RBETA

RES SMD 280 OHM 0.1% 1/10W 0603

[Vishay Dale](#)

RFQ

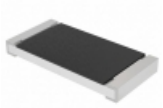


TNPW080591R0BETA

RES SMD 91 OHM 0.1% 1/8W 0805

[Vishay Dale](#)

RFQ



CRCW2512768RFKEGHP

RES SMD 768 OHM 1% 1.5W 2512

[Vishay Dale](#)

RFQ

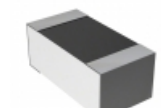


RT1206BRC07274KL

RES SMD 274K OHM 0.1% 1/4W 1206

[Yageo](#)

RFQ



RN73C1J10RBTD

RES SMD 10 OHM 0.1% 1/16W 0603

[TE Connectivity AMP Connectors](#)

RFQ

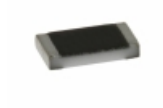


TNPW08059K53BETA

RES SMD 9.53K OHM 0.1% 1/8W 0805

[Vishay Dale](#)

RFQ

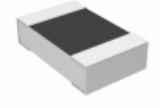


TNPW080538K3BETA

RES SMD 38.3K OHM 0.1% 1/8W 0805

[Vishay Dale](#)

RFQ



RP73D2A536RBTDF

RES SMD 536 OHM 0.1% 1/8W 0805

[TE Connectivity Passive Product](#)

RFQ



RT0805BRB0720R5L

RES SMD 20.5 OHM 0.1% 1/8W 0805

[Yageo](#)

RFQ



RG1608P-3480-P-T1

RES SMD 348 OHM 0.02% 1/10W 0603

[Susumu](#)

RFQ