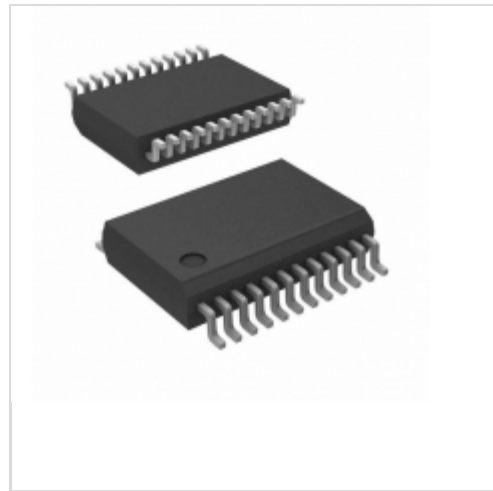


CS5466-ISZR



Cirrus Logic

IC ENERGY METERING 1PHASE 24SSOP

Lead free / RoHS Compliant

Integrated Circuits (ICs)

[CS5466-ISZR.pdf](#)

Buy Now

Out Stock

0 pcs

Minimum:1

Multiples:100

Manufacturer lead time 10 weeks

part#CS5466-ISZR is available, see description of CS5466-ISZR as below .

use the request quote form to request CS5466-ISZR price and lead time.

Buy Electronic Components at zeanoit.com .we are an independent distributor of electronic components with extensive inventory in stock.

The price and lead time for CS5466-ISZR depending on the quantity required, availability and warehouse location.Contact us today and our sales team will send you quotation soon.

Email: sales@zeanoit.com

Shopping Process

1

Confirm the product

2

submit the order

3

payment

4

wait for delivery

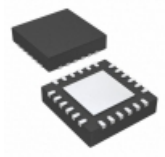
5

receive the goods

Specifications

Voltage - Supply:	4.75 V ~ 5.25 V
Voltage - I/O Low:	0.2V
Voltage - I/O High:	0.8V
Supplier Device Package:	24-SSOP
Series:	-
Packaging:	Tape & Reel (TR)
Package / Case:	24-SSOP (0.209", 5.30mm Width)
Operating Temperature:	-40°C ~ 85°C
Mounting Type:	Surface Mount
Meter Type:	Single Phase
Measurement Error:	0.1%
Input Impedance:	30 kOhm
Current - Supply:	2.9mA

Related products



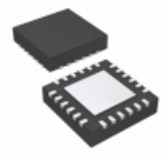
CS5480-INZR
IC ENERGY METER 3-CH 24QFN
[Cirrus Logic Inc.](#)

RFQ



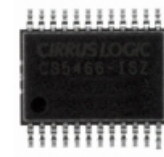
CS5464-ISZ
IC ENERGY METERING 1PHASE 28SSOP
[Cirrus Logic Inc.](#)

RFQ



CS5480-INZ
IC ENERGY METER 3-CH 24QFN
[Cirrus Logic Inc.](#)

RFQ



CS5466-ISZ
IC ENERGY METERING 1PHASE 24SSOP
[Cirrus Logic Inc.](#)

RFQ



CS5464-ISZR
IC ENERGY METERING 1PHASE 28SSOP
[Cirrus Logic Inc.](#)

RFQ



CS5467-ISZ
IC ENERGY METERING 1PHASE 28SSOP
[Cirrus Logic Inc.](#)

RFQ



CS5464-IS
IC PWR/ENERGY METER 3CH 28-SSOP
[Cirrus Logic Inc.](#)

RFQ



CS5484-1NZ
[CIRRUS](#)

RFQ



CS5466-IS
IC ENERGY METERING 1PHASE 24SSOP
[Cirrus Logic Inc.](#)

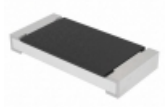
RFQ



CS5467-ISZR
IC ENERGY METERING 1PHASE 28SSOP
[Cirrus Logic Inc.](#)

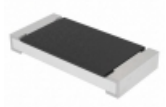
RFQ

Guess You May Looking For



CRCW201011R0FKEFHP
RES SMD 11 OHM 1% 1W 2010
[Vishay Dale](#)

RFQ



CRCW20108K06FKEFHP
RES SMD 8.06K OHM 1% 1W 2010
[Vishay Dale](#)

RFQ



RG3216N-3601-D-T5
RES SMD 3.6K OHM 0.5% 1/4W 1206
[Susumu](#)

RFQ



RNCF2512DKE6R34
RES SMD 6.34 OHM 0.5% 1W 2512
[Stackpole Electronics Inc.](#)

RFQ



RNCF1210DTC43R2
RES SMD 43.2 OHM 0.5% 1/3W 1210
[Stackpole Electronics Inc.](#)

RFQ



RNCF1210DTC37K4
RES SMD 37.4K OHM 0.5% 1/3W 1210
[Stackpole Electronics Inc.](#)

RFQ



RNCF1210DTC19R1
RES SMD 19.1 OHM 0.5% 1/3W 1210
[Stackpole Electronics Inc.](#)

RFQ



RG1005N-2371-D-T10
RES SMD 2.37KOHM 0.5% 1/16W 0402
[Susumu](#)

RFQ



RG1005N-4752-D-T10
RES SMD 47.5KOHM 0.5% 1/16W 0402
[Susumu](#)

RFQ



PE2010FKF070R08L
RES SMD 0.08 OHM 1% 1/2W 2010
[Yageo](#)

RFQ