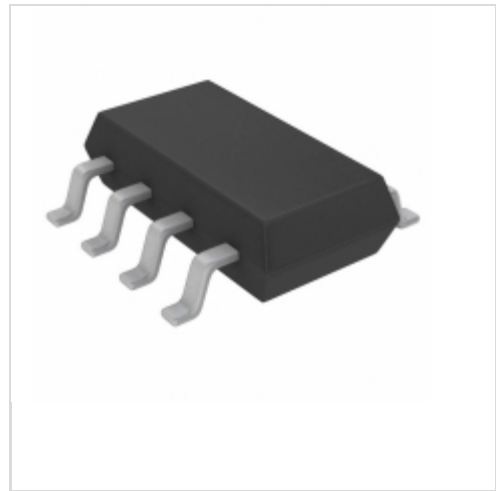


**LTC4366HTS8-2#TRPBF**



[Linear Technology / Analog Devices](#)

IC SURGE STOPPER HV TSOT-23-8  
Lead free / RoHS Compliant  
Circuit Protection

[LTC4366HTS8-2#TRPBF.pdf](#)

**Buy Now**

Images are for reference only.

See Product Specifications for product details.

If you are interested to buy LTC4366HTS8-2#TRPBF, Just Email us.

Sales@zeanoit.com

our sales team will reply you within 24 hours

**Out Stock**

**0 pcs**

Minimum:1

Multiples:100

Manufacturer lead time 10 weeks

Shopping Process



**Confirm the product**



**submit the order**



**payment**



**wait for delivery**



**receive the goods**

Specifications

<b>Voltage - Working:</b>	9V
<b>Voltage - Clamping:</b>	Adjustable
<b>Technology:</b>	External Switch
<b>Supplier Device Package:</b>	TSOT-23-8
<b>Series:</b>	-
<b>Power (Watts):</b>	-
<b>Packaging:</b>	Tape & Reel (TR)
<b>Package / Case:</b>	SOT-23-8 Thin, TSOT-23-8
<b>Number of Circuits:</b>	1
<b>Mounting Type:</b>	Surface Mount
<b>Applications:</b>	Automotive

Related products

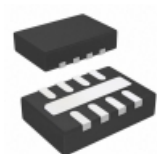


**LTC4366HTS8-2#TRMPBF**

IC SURGE STOPPER HV TSOT-23-8

[Linear Technology](#)

RFQ

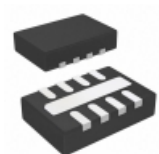


**LTC4366HDD8-2#TRPBF**

IC SURGE STOPPER HV 8DFN

[Linear Technology](#)

RFQ

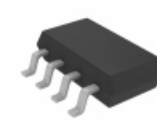


**LTC4366IDD8-1#TRMPBF**

IC SURGE STOPPER HV 8-DFN

[Linear Technology](#)

RFQ

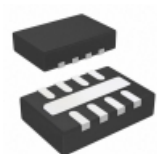


**LTC4366HTS8-1#TRMPBF**

IC SURGE STOPPER HV TSOT-23-8

[Linear Technology](#)

RFQ

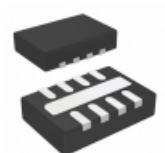


**LTC4366IDD8-2#TRPBF**

IC SURGE STOPPER HV 8-DFN

[Linear Technology](#)

RFQ



**LTC4366HDD8-2#TRMPBF**

SURGE STOPPER SMD

[Linear Technology](#)

RFQ



**LTC4366HTS8-1#TRPBF**

IC SURGE STOPPER HV TSOT-23-8

[Linear Technology](#)

RFQ

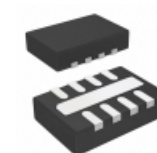


**LTC4366ITS8-1#TRMPBF**

IC SURGE STOPPER HV TSOT-23-8

[Linear Technology](#)

RFQ

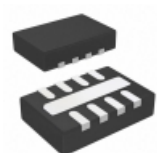


**LTC4366IDD8-1#TRPBF**

IC SURGE STOPPER HV 8-DFN

[Linear Technology](#)

RFQ



**LTC4366IDD8-2#TRMPBF**

IC SURGE STOPPER HV 8-DFN

[Linear Technology](#)

RFQ

Guess You May Looking For



**VTVS43GSMF-M3-08**

TVS DIODE 43.2VWM 73VC SMF

[Vishay Semiconductor Diodes Division](#)

RFQ

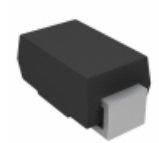


**P4SMA200C**

TVS DIODE 171VWM 287.7VC SMD

[Littelfuse Inc.](#)

RFQ

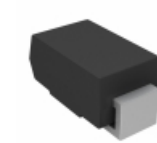


**SMA5J28CAHE3/5A**

TVS DIODE 28VWM 45.4VC SMA

[Vishay Semiconductor Diodes Division](#)

RFQ



**SMA5J5.0AHE3/61**

TVS DIODE 5VWM 9.2VC SMA

[Vishay Semiconductor Diodes Division](#)

RFQ

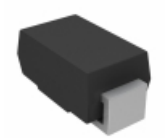


**P6SMB300CA**

TVS DIODE 256VWM 414VC DO214AA

[Bourns Inc.](#)

RFQ



**P4SMA200CAHE3/61**

TVS DIODE 171VWM 274VC SMA

[Vishay Semiconductor Diodes Division](#)

RFQ



**SMBG24A-M3/5B**

TVS DIODE 24VWM 38.9VC DO-215AA

[Vishay Semiconductor Diodes Division](#)

RFQ



**SM15T220A-M3/9AT**

TVS DIODE 188VWM 328VC DO214AB

[Vishay Semiconductor Diodes Division](#)

RFQ



**SM6T150CAHE3/52**

TVS DIODE 128VWM 207VC SMB

[Vishay Semiconductor Diodes Division](#)

RFQ



**SM6T24CAHE3/52**

TVS DIODE 20.5VWM 33.2VC SMB

[Vishay Semiconductor Diodes Division](#)

RFQ