

MAX6419UK46+T



Maxim Integrated

IC RESET MPU LOW PWR SOT23-5
Lead free / RoHS Compliant
Integrated Circuits (ICs)

- 1.MAX6419UK46+T.pdf
- 2.MAX6419UK46+T.pdf

Buy Now

Out Stock

0 pcs

Minimum:1

Multiples:100

Manufacturer lead time 10 weeks

Images are for reference only.

See Product Specifications for product details.

If you are interested to buy MAX6419UK46+T,Just Email us.

Sales@zeanoit.com

our sales team will reply you within 24 hours

Shopping Process

1

Confirm the product

2

submit the order

3

payment

4

wait for delivery

5

receive the goods

Specifications

Voltage - Threshold:	4.625V, Adj
Type:	Multi-Voltage Supervisor
Supplier Device Package:	SOT-23-5
Series:	-
Reset Timeout:	Adjustable/Selectable
Reset:	Active High
Packaging:	Tape & Reel (TR)
Package / Case:	SC-74A, SOT-753
Output:	Push-Pull, Totem Pole
Operating Temperature:	-40°C ~ 125°C (TA)
Number of Voltages Monitored:	2
Mounting Type:	Surface Mount

Related products



MAX6419UK31+T
IC MPU/RESET CIRC 3.075V SOT23-5
[Maxim Integrated](#)

RFQ



MAX6419UK44+T
IC RESET MPU LOW PWR SOT23-5
[Maxim Integrated](#)

RFQ



MAX641ACSA+
IC REG BOOST ADJ/5V 0.45A 8SOIC
[Maxim Integrated](#)

RFQ



MAX6419UK29-T
in stock
[MAXIM](#)

RFQ



MAX6419UK29+T
IC RESET MPU LOW PWR SOT23-5
[Maxim Integrated](#)

RFQ



MAX641ACSA
[MAX](#)

RFQ



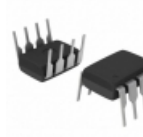
MAX6419UK46-T
in stock
[MAXIM](#)

RFQ



MAX641ACPA
in stock
[MAXIM](#)

RFQ



MAX641ACPA
IC REG BOOST ADJ/5V 0.45A 8DIP
[Maxim Integrated](#)

RFQ



MAX6419UK29+
in stock
[MAXIM](#)

RFQ

Guess You May Looking For



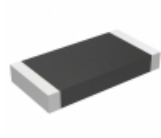
9T04021A2052BBHF3
RES SMD 20.5KOHM 0.1% 1/16W 0402
[Yageo](#)

RFQ



RG3216N-2101-P-T1
RES SMD 2.1K OHM 0.02% 1/4W 1206
[Susumu](#)

RFQ



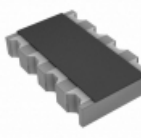
LRMAM2512-R005FT4
RES SMD 0.005 OHM 1% 2W 2512
[TT Electronics/Welwyn](#)

RFQ



4606X-102-472LF
RES ARRAY 3 RES 4.7K OHM 6SIP
[Bourns Inc.](#)

RFQ



742C083824JPTR
RES ARRAY 4 RES 820K OHM 1206
[CTS Resistor Products](#)

RFQ



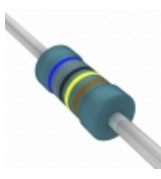
YC358LJK-075K6L
RES ARRAY 8 RES 5.6K OHM 2512
[Yageo](#)

RFQ



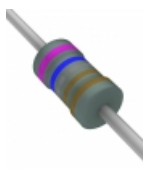
RSF100JB-73-2R7
RES 2.7 OHM 1W 5% AXIAL
[Yageo](#)

RFQ



MRS16000C6809FCT00
RES 68 OHM 0.4W 1% AXIAL
[Vishay BC Components](#)

RFQ



RNF12FTC7K68
RES 7.68K OHM 1/2W 1% AXIAL
[Stackpole Electronics Inc.](#)

RFQ



RN60D2403FRE6
RES 240K OHM 1/4W 1% AXIAL
[Vishay Dale](#)

RFQ