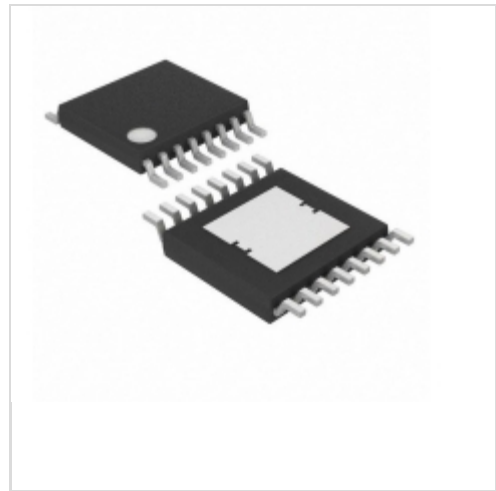


## MAX16907SAUE/V+



### Maxim Integrated

IC REG BUCK ADJ/5V 3A 16TSSOP

Lead free / RoHS Compliant

Integrated Circuits (ICs)

[1.MAX16907SAUE/V+.pdf](#)

[2.MAX16907SAUE/V+.pdf](#)

[3.MAX16907SAUE/V+.pdf](#)

**Buy Now**

**In Stock**

**184 pcs**

Minimum:1

Multiples:100

Manufacturer lead time 10 weeks

#### PRICE

1 pcs	\$6.26
10 pcs	\$5.95
25 pcs	\$4.33
50 pcs	\$4.11
100 pcs	\$2.89
250 pcs	\$2.87

We can supply Maxim Integrated MAX16907SAUE/V+, use the request quote form to request MAX16907SAUE/V+ pirce, Maxim Integrated Datasheet PDF and lead time.Zeanoit.com is a professional electronic components distributor. With 3+ Million line items of available electronic components can ship in short lead-time, over 250 thousand part numbers of electronic components in stock for immediately delivery, which may include part number MAX16907SAUE/V+.The price and lead time for MAX16907SAUE/V+ depending on the quantity required, availability and warehouse location.

## Shopping Process

**1**

Confirm the product

**2**

submit the order

**3**

payment

**4**

wait for delivery

**5**

receive the goods

## Specifications

<b>Voltage - Output (Min/Fixed):</b>	1V (5V)
<b>Voltage - Output (Max):</b>	10V
<b>Voltage - Input (Min):</b>	3.5V
<b>Voltage - Input (Max):</b>	36V
<b>Topology:</b>	Buck
<b>Synchronous Rectifier:</b>	No
<b>Supplier Device Package:</b>	16-TSSOP-EP
<b>Series:</b>	Automotive, AEC-Q100
<b>Packaging:</b>	Tube
<b>Package / Case:</b>	16-TSSOP (0.173", 4.40mm Width) Exposed Pad
<b>Output Type:</b>	Adjustable (Fixed)
<b>Output Configuration:</b>	Positive
<b>Operating Temperature:</b>	-40°C ~ 125°C (TJ)
<b>Number of Outputs:</b>	1
<b>Mounting Type:</b>	Surface Mount
<b>Function:</b>	Step-Down
<b>Frequency - Switching:</b>	2.2MHz
<b>Current - Output:</b>	3A

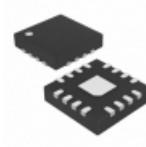
## Related products



**MAX16907SAUE/VEO**

MAX

RFQ

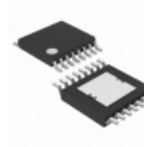


**MAX16907SATE/V+T**

IC REG BUCK ADJ/5V 3A 16TQFN

Maxim Integrated

RFQ

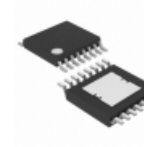


**MAX16907SAUE+T**

IC REG BUCK ADJ/5V 3A 16TSSOP

Maxim Integrated

RFQ



**MAX16907SAUE/V+T**

IC REG BUCK ADJ/5V 3A 16TSSOP

Maxim Integrated

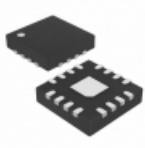
RFQ



**MAX16908RA50/V**

MAXIM

RFQ

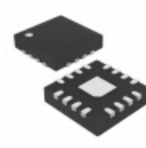


**MAX16907SATE+T**

IC REG BUCK ADJ/5V 3A 16TQFN

Maxim Integrated

RFQ



**MAX16907SATE/V+**

IC REG BUCK ADJ/5V 3A 16TQFN

Maxim Integrated

RFQ



**MAX16907SAUE/VEN**

MAX

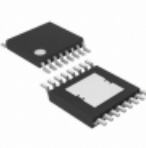
RFQ



**MAX16908RA50/V+T**

MAXIM

RFQ



**MAX16907SAUE+**

IC REG BUCK ADJ/5V 3A 16TSSOP

Maxim Integrated

RFQ

## Guess You May Looking For



**SR152A2R5DAATR1**

CAP CER 2.5PF 200V COG/NPO RAD

AVX Corporation

RFQ

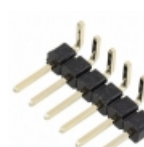


**2220J3K00221JXT**

CAP CER 2220

Knowles Syfer

RFQ



**61300611021**

CONN HEADER 6 POS RA 2.54

Würth Electronics Inc.

RFQ

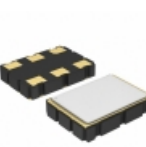


**8PCV-02-007**

CONN BARRIER STRIP 2CIRC 0.438"

TE Connectivity AMP Connectors

RFQ



**SG7050EBN 100.000000M-DJGA3**

OSC 100.0000 MHZ LVPECL SMD

EPSON

RFQ



**SIT1602AC-33-33E-26.000000T**

OSC XO 3.3V 26MHZ OE

SITIME

RFQ

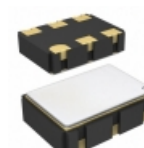


**SIT1602BC-33-28N-66.666000T**

-20 TO 70C, 5032, 50PPM, 2.8V, 6

SITIME

RFQ



**ASG-D-V-B-500.000MHZ**

OSC VCXO 500.000MHZ LVDS SMD

Abracon LLC

RFQ



**ASEMPC-125.000MHZ-LR-T**

OSC MEMS 125.000MHZ CMOS SMD

Abracon LLC

RFQ



**SIT1602BI-33-25N-10.000000X**

-40 TO 85C, 5032, 50PPM, 2.5V, 1

SITIME

RFQ

