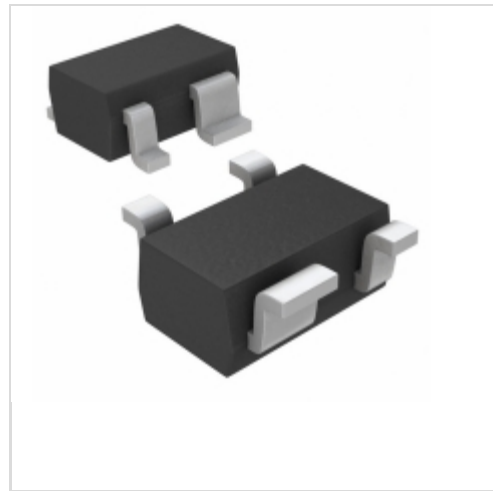


MAX6388XS22D4-T



Maxim Integrated

IC MPU/RESET CIRC 2.19V SC70-4
 Contains lead / RoHS non-compliant
 Integrated Circuits (ICs)

- 1.MAX6388XS22D4-T.pdf
- 2.MAX6388XS22D4-T.pdf

Buy Now

We can supply MAX6388XS22D4-T, use the request quote form to request MAX6388XS22D4-T price and lead time. Zeano is a professional electronic components distributor. With 3+ Million line items of available electronic components can ship in short lead-time, over 250 thousand part numbers of electronic components in stock for immediately delivery, which may include part number MAX6388XS22D4-T. The price and lead time for MAX6388XS22D4-T depending on the quantity required and warehouse location. Contact us and our sales representative will provide you price. We look forward to work with you.

Shopping Process

1

Confirm the product

2

submit the order

3

payment

4

wait for delivery

5

receive the goods

Specifications

Voltage - Threshold:	2.19V, Adj
Type:	Multi-Voltage Supervisor
Supplier Device Package:	SC-70-4
Series:	-
Reset Timeout:	1.12 s Minimum
Reset:	Active High
Packaging:	Tape & Reel (TR)
Package / Case:	SC-82A, SOT-343
Output:	Push-Pull, Totem Pole
Operating Temperature:	-40°C ~ 125°C (TA)
Number of Voltages Monitored:	2
Mounting Type:	Surface Mount

Related products



MAX6388XS22D3-T

in stock
[MAXIM](#)

RFQ



MAX6388XS22D2-T

in stock
[MAXIM](#)

RFQ



MAX6388XS22D5-T

in stock
[MAXIM](#)

RFQ



MAX6388XS22D6-T

IC MPU/RESET CIRC 2.19V SC70-4
[Maxim Integrated](#)

RFQ



MAX6388XS22D7-T

IC MPU/RESET CIRC 2.19V SC70-4
[Maxim Integrated](#)

RFQ



MAX6388XS22D5-T

IC MPU/RESET CIRC 2.19V SC70-4
[Maxim Integrated](#)

RFQ



MAX6388XS22D3-T

IC MPU/RESET CIRC 2.19V SC70-4
[Maxim Integrated](#)

RFQ



MAX6388XS22D2-T

IC MPU/RESET CIRC 2.19V SC70-4
[Maxim Integrated](#)

RFQ



MAX6388XS22D4-T

in stock
[MAXIM](#)

RFQ



MAX6388XS22D6-T

in stock
[MAXIM](#)

RFQ

Guess You May Looking For



RG3216N-4750-P-T1

RES SMD 475 OHM 0.02% 1/4W 1206
[Susumu](#)

RFQ



RG2012N-3012-C-T5

RES SMD 30.1KOHM 0.25% 1/8W 0805
[Susumu](#)

RFQ



766161391G

RES ARRAY 15 RES 390 OHM 16SOIC
[CTS Resistor Products](#)

RFQ



77083562

RES ARRAY 4 RES 5.6K OHM 8SIP
[CTS Resistor Products](#)

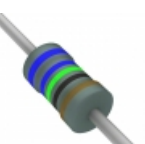
RFQ



OK2725E-R52

RES 2.7K OHM 1/4W 5% AXIAL
[Ohmite](#)

RFQ



RNF18FTD665R

RES 665 OHM 1/8W 1% AXIAL
[Stackpole Electronics Inc.](#)

RFQ



RN55D3090FRE6

RES 309 OHM 1/8W 1% AXIAL
[Vishay Dale](#)

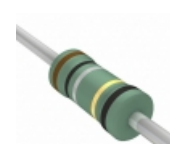
RFQ



CMF60332R00FKR670

RES 332 OHM 1W 1% AXIAL
[Vishay Dale](#)

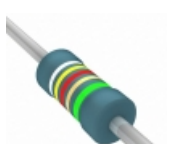
RFQ



NKN5WSJR-73-2R2

RES 2.2 OHM 5W 5% AXIAL
[Yageo](#)

RFQ



MBA02040C9429DRP00

RES 94.2 OHM 0.4W 0.5% AXIAL
[Vishay BC Components](#)

RFQ