

SUS5102QP2HT1G



[AMI Semiconductor / ON Semiconductor](#)

MI HI SDE SMRT HOTPLUG
Lead free / RoHS Compliant
Integrated Circuits (ICs)

Buy Now

part#SUS5102QP2HT1G is available, see description of SUS5102QP2HT1G as below . use the request quote form to request SUS5102QP2HT1G price and lead time. Buy Electronic Components at zeanoit.com .we are an independent distributor of electronic components with extensive inventory in stock. The price and lead time for SUS5102QP2HT1G depending on the quantity required, availability and warehouse location.Contact us today and our sales team will send you quotation soon.
Email: sales@zeanoit.com

Shopping Process

1

Confirm the product

2

submit the order

3

payment

4

wait for delivery

5

receive the goods

Specifications

Voltage - Supply:	-
Type:	-
Supplier Device Package:	-
Series:	-
Programmable Features:	-
Packaging:	-
Package / Case:	-
Operating Temperature:	-
Number of Channels:	-
Mounting Type:	-
Internal Switch(s):	-
Features:	-
Feature Pins:	-
Current - Supply:	-
Current - Output (Max):	-
Applications:	-

Related products



UCC3913DG4
IC NEG VOLT POWER MGR 8-SOIC
[Texas Instruments](#)

RFQ



SUSB
CONN RCPT USB SINGLE R/A PCB MT
[Switchcraft Inc.](#)

RFQ



SUS1R50505BP
[COSEL](#)

RFQ



SUS6160MNTWG
OVP IC WITH INTEGRATED MO
[ON Semiconductor](#)

RFQ



SUSBX
CONNECTOR SINGLE USB
[Switchcraft Inc.](#)

RFQ



SUS1R50512B
[COSEL](#)

RFQ



SUS6053R3B
[COSEL](#)

RFQ



SUS6160MNTBG
OVP IC WITH INTEGRATED MO
[ON Semiconductor](#)

RFQ



SUS6160
[ON](#)

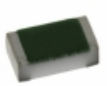
RFQ



SUS5102QP1HT1G
MI HI SDE SMRT HOTPLUG
[ON Semiconductor](#)

RFQ

Guess You May Looking For



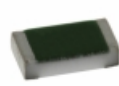
TNPW040284K5BETD
RES SMD 84.5KOHM 0.1% 1/16W 0402
[Vishay Dale](#)

RFQ



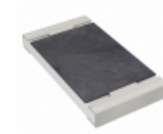
RT0603WRD076K04L
RES SMD 6.04K OHM 1/10W 0603
[Yageo](#)

RFQ



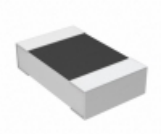
TNPW060316R9BETA
RES SMD 16.9 OHM 0.1% 1/10W 0603
[Vishay Dale](#)

RFQ



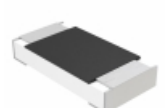
RT2010DKE071K96L
RES SMD 1.96K OHM 0.5% 1/2W 2010
[Yageo](#)

RFQ



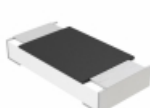
RP73D2A97R6BTDF
RES SMD 97.6 OHM 0.1% 1/8W 0805
[TE Connectivity Passive Product](#)

RFQ



MCA12060D7151BP100
RES SMD 7.15K OHM 0.1% 1/4W 1206
[Vishay Beyschlag](#)

RFQ



MCA12060D9101BP100
RES SMD 9.1K OHM 0.1% 1/4W 1206
[Vishay Beyschlag](#)

RFQ



RT0805BRB0744K2L
RES SMD 44.2K OHM 0.1% 1/8W 0805
[Yageo](#)

RFQ



ERJ-L1WUJ53MU
RES SMD 0.053 OHM 5% 1W 2512
[Panasonic Electronic Components](#)

RFQ



ERJ-L1WUJ62MU
RES SMD 0.062 OHM 5% 1W 2512
[Panasonic Electronic Components](#)

RFQ