

UC2708DWTR



N/A
IC DUAL NON-INV PWR DRVR 16SOIC
Lead free / RoHS Compliant
Integrated Circuits (ICs)

Buy Now

Part No. UC2708DWTR Is this a common-used part? : Yes
Shipped from : HK or Singapore warehouse
Same model may have multiple batches, images only for reference.
ECAD Models : Contact us to get
Email:sales@zeanoit.com

Out Stock

0 pcs

Minimum:1

Multiples:1

Manufacturer lead time 10 weeks

Shopping Process



1
Confirm the product



2
submit the order



3
payment



4
wait for delivery



5
receive the goods

Specifications

Voltage - Supply:	5 V ~ 35 V
Supplier Device Package:	16-SOIC
Series:	-
Rise / Fall Time (Typ):	25ns, 25ns
Packaging:	Tape & Reel (TR)
Package / Case:	16-SOIC (0.295", 7.50mm Width)
Operating Temperature:	-25°C ~ 85°C (TA)
Number of Drivers:	2
Mounting Type:	Surface Mount
Logic Voltage - VIL, VIH:	0.8V, 2V
Input Type:	Non-Inverting
Gate Type:	N-Channel, P-Channel MOSFET
Driven Configuration:	Low-Side
Current - Peak Output (Source, Sink):	3A, 3A
Channel Type:	Independent

Related products



UC2708DWG4
IC DUAL NON-INV PWR DRVR 16SOIC
N/A

RFQ



UC2708DWTRG4
IC DUAL NON-INV PWR DRVR 16SOIC
N/A

RFQ



UC2707N
IC COMPLEMENTARY PWR DRVR 16-DIP
N/A

RFQ



UC2708N
IC DUAL NON-INV PWR DRVR 8DIP
N/A

RFQ



UC2708NG4
IC DUAL NON-INV PWR DRVR 8DIP
N/A

RFQ



UC2707NG4
IC COMPLEMENTARY PWR DRVR 16-DIP
N/A

RFQ



UC2708NE
IC DUAL NON-INV PWR DRVR 16DIP
N/A

RFQ



UC2708DW
IC DUAL NON-INV PWR DRVR 16-SOIC
N/A

RFQ



UC2708NEG4
IC DUAL NON-INV PWR DRVR 16DIP
N/A

RFQ



UC2707Q
IC DUAL CHAN POWER DRIVER 20PLCC
N/A

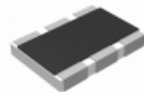
RFQ

Guess You May Looking For



CSR1225JK82L0
RES SMD 0.082 OHM 3W 2512 WIDE
Stackpole Electronics Inc.

RFQ



RC1218DK-0713K3L
RES SMD 13.3K OHM 1W 1812 WIDE
Yageo

RFQ



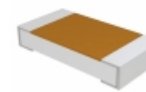
RNCF1210BTC1M37
RES SMD 1.37M OHM 0.1% 1/4W 1210
Stackpole Electronics Inc.

RFQ



RNCF1210BKE20K5
RES SMD 20.5K OHM 0.1% 1/3W 1210
Stackpole Electronics Inc.

RFQ



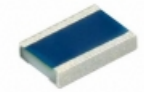
TNPW1206130RBETA
RES SMD 130 OHM 0.1% 1/4W 1206
Vishay Dale

RFQ



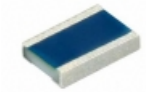
RG2012N-434-B-T5
RES SMD 430K OHM 0.1% 1/8W 0805
Susumu

RFQ



MCW0406MD8259BP100
RES SMD 82.5 OHM 1/4W 0604 WIDE
Vishay Beyschlag

RFQ



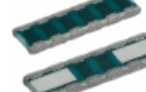
MCW0406MD1370BP100
RES SMD 137 OHM 1/4W 0604 WIDE
Vishay Beyschlag

RFQ



MCW0406MD1151BP100
RES SMD 1.15K OHM 1/4W 0604 WIDE
Vishay Beyschlag

RFQ



RL7520WT-R009-F
RES SMD 0.009 OHM 2W 3008 WIDE
Susumu

RFQ