

EYP-2BN183



Panasonic

TCO 250VAC 2A 188C AXIAL
Contains lead / RoHS non-compliant
Circuit Protection

[EYP-2BN183.pdf](#)

Buy Now

Images are for reference only.

See Product Specifications for product details.

If you are interested to buy EYP-2BN183,Just Email us.

Sales@zeanoit.com

our sales team will reply you within 24 hours

Shopping Process

1

Confirm the product

2

submit the order

3

payment

4

wait for delivery

5

receive the goods

Specifications

Voltage - Rated DC:	-
Voltage - Rated AC:	-
Series:	-
Rated Functioning Temperature:	-
Package / Case:	Axial
Maximum Temperature Limit:	-
Holding Temperature:	-
Current Rating:	-
Approvals:	-

Related products



EYP-2BN163
TCO 250VAC 2A 168C(334F) AXIAL
[Panasonic Electronic Components](#)

RFQ



EYP-2MT098
TCO 50VDC 2A 98C(208F) STRAP
[Panasonic Electronic Components](#)

RFQ



EYP-2MT092B
TCO 50VDC 2A 92C(198F) STRAP
[Panasonic Electronic Components](#)

RFQ



EYP-2BN135
TCO 250VAC 2A 140C(284F) AXIAL
[Panasonic Electronic Components](#)

RFQ



EYP-2BN126
TCO 250VAC 2A 133C(271F) AXIAL
[Panasonic Electronic Components](#)

RFQ



EYP-2MT092
TCO 50VDC 2A 92C(198F) STRAP
[Panasonic Electronic Components](#)

RFQ



EYP-2BN143
TCO 250VAC 2A 145C(293F) AXIAL
[Panasonic Electronic Components](#)

RFQ



EYP-2BN124
TCO 250VAC 2A 130C(266F) AXIAL
[Panasonic Electronic Components](#)

RFQ



EYP-2MT092A
TCO 50VDC 2A 92C(198F) STRAP
[Panasonic Electronic Components](#)

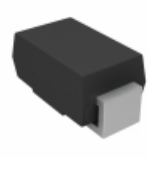
RFQ



EYP-2MT098A
TCO 50VDC 2A 98C(208F) STRAP
[Panasonic Electronic Components](#)

RFQ

Guess You May Looking For



P4SMA20CAHE3/5A
TVS DIODE 17.1VWM 27.7VC SMA
[Vishay Semiconductor Diodes Division](#)

RFQ



1SMC8.0AT3G
TVS DIODE 8VWM 13.6VC SMC
[Littelfuse Inc.](#)

RFQ



SMBJ3V3-M3/5B
TVS DIODE 3.3VWM - DO-215AA
[Vishay Semiconductor Diodes Division](#)

RFQ



1.5SMC100A
TVS DIODE 85.5VWM 137VC SMD
[Littelfuse Inc.](#)

RFQ



1KSMB56
TVS DIODE 47.8VWM 80.85VC SMD
[Littelfuse Inc.](#)

RFQ



1KSMB10A
TVS DIODE 8.55VWM 14.5VC SMD
[Littelfuse Inc.](#)

RFQ



1KSMB180A
TVS DIODE 153VWM 246VC SMD
[Littelfuse Inc.](#)

RFQ



1KSMB47A
TVS DIODE 40.2VWM 64.8VC SMD
[Littelfuse Inc.](#)

RFQ



1.5SMC130A
TVS DIODE 111VWM 179VC SMD
[Littelfuse Inc.](#)

RFQ



SM15T100A-M3/57T
TVS DIODE 85.5VWM 137VC DO214AB
[Vishay Semiconductor Diodes Division](#)

RFQ