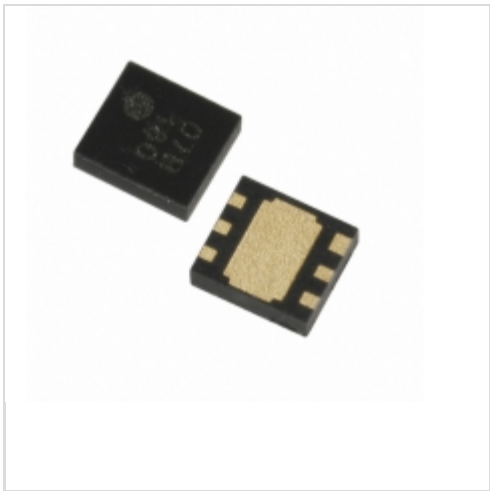


## XC6123A425ER-G



**Torex Semiconductor Ltd.**

IC WATCHDOG TIMER 6-USP

Lead free / RoHS Compliant

Integrated Circuits (ICs)

[XC6123A425ER-G.pdf](#)

**Buy Now**

**Out Stock**

**0 pcs**

Minimum:1

Multiples:100

Manufacturer lead time 10 weeks

Images are for reference only.

See Product Specifications for product details.

If you are interested to buy XC6123A425ER-G,Just Email us.

Sales@zeanoit.com

our sales team will reply you within 24 hours

### Shopping Process

**1**

**Confirm the product**

**2**

**submit the order**

**3**

**payment**

**4**

**wait for delivery**

**5**

**receive the goods**

### Specifications

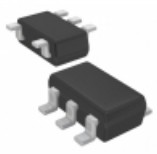
<b>Voltage - Threshold:</b>	2.5V
<b>Type:</b>	Watchdog Circuit
<b>Supplier Device Package:</b>	6-USPC (1.8x2)
<b>Series:</b>	-
<b>Reset Timeout:</b>	200 ms Typical
<b>Reset:</b>	Active Low
<b>Packaging:</b>	Tape & Reel (TR)
<b>Package / Case:</b>	6-UFDFN Exposed Pad
<b>Output:</b>	Open Drain or Open Collector
<b>Operating Temperature:</b>	-40°C ~ 85°C (TA)
<b>Number of Voltages Monitored:</b>	1
<b>Mounting Type:</b>	Surface Mount

### Related products



**XC6123A426MR-G**  
IC WATCHDOG TIMER SOT-25  
[Torex Semiconductor Ltd](#)

RFQ



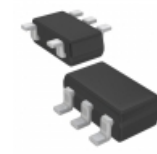
**XC6123A427MR-G**  
IC WATCHDOG TIMER SOT-25  
[Torex Semiconductor Ltd](#)

RFQ



**XC6123A422ER-G**  
IC WATCHDOG TIMER 6-USP  
[Torex Semiconductor Ltd](#)

RFQ



**XC6123A422MR-G**  
IC WATCHDOG TIMER SOT-25  
[Torex Semiconductor Ltd](#)

RFQ



**XC6123A425MR-G**  
IC WATCHDOG TIMER SOT-25  
[Torex Semiconductor Ltd](#)

RFQ



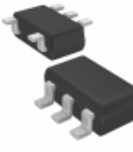
**XC6123A420MR-G**  
IC WATCHDOG TIMER SOT-25  
[Torex Semiconductor Ltd](#)

RFQ



**XC6123A421ER-G**  
IC WATCHDOG TIMER 6-USP  
[Torex Semiconductor Ltd](#)

RFQ



**XC6123A421MR-G**  
IC WATCHDOG TIMER SOT-25  
[Torex Semiconductor Ltd](#)

RFQ



**XC6123A426ER-G**  
IC WATCHDOG TIMER 6-USP  
[Torex Semiconductor Ltd](#)

RFQ



**XC6123A427ER-G**  
IC WATCHDOG TIMER 6-USP  
[Torex Semiconductor Ltd](#)

RFQ

### Guess You May Looking For



**RG2012N-3400-B-T1**  
RES SMD 340 OHM 0.1% 1/8W 0805  
[Susumu](#)

RFQ



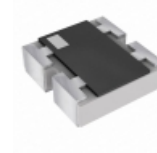
**RG3216P-4322-W-T1**  
RES SMD 43.2KOHM 0.05% 1/4W 1206  
[Susumu](#)

RFQ



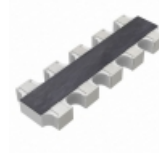
**4606X-102-103LF**  
RES ARRAY 3 RES 10K OHM 6SIP  
[Bourns Inc.](#)

RFQ



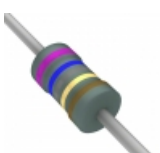
**CRASN100KF1K00TA**  
RES ARRAY 2 RES MULT OHM 0606  
[Vishay Dale](#)

RFQ



**YC158TJR-07270KL**  
RES ARRAY 8 RES 270K OHM 1206  
[Yageo](#)

RFQ



**RNF18FTD76R8**  
RES 76.8 OHM 1/8W 1% AXIAL  
[Stackpole Electronics Inc.](#)

RFQ



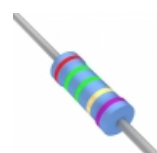
**RN55D1911FRE6**  
RES 1.91K OHM 1/8W 1% AXIAL  
[Vishay Dale](#)

RFQ



**RN55E2611FR36**  
RES 2.61K OHM 1/8W 1% AXIAL  
[Vishay Dale](#)

RFQ



**YR1B25R5CC**  
RES 25.5 OHM 1/4W 0.1% AXIAL  
[TE Connectivity Passive Product](#)

RFQ



**CMF555M0000GNR6**  
RES 5M OHM 1/2W 2% AXIAL  
[Vishay Dale](#)

RFQ