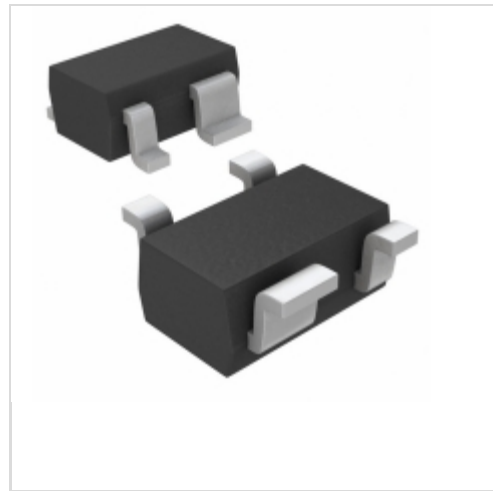


**MAX6385XS41D1-T**

**Maxim Integrated**

 IC MPU/RESET CIRC 4.10V SC70-4  
 Contains lead / RoHS non-compliant  
 Integrated Circuits (ICs)

1.MAX6385XS41D1-T.pdf

2.MAX6385XS41D1-T.pdf

**Buy Now**

We can supply MAX6385XS41D1-T, use the request quote form to request MAX6385XS41D1-T price and lead time. Zeano is a professional electronic components distributor. With 3+ Million line items of available electronic components can ship in short lead-time, over 250 thousand part numbers of electronic components in stock for immediately delivery, which may include part number MAX6385XS41D1-T. The price and lead time for MAX6385XS41D1-T depending on the quantity required and warehouse location. Contact us and our sales representative will provide you price. We look forward to work with you.

## Shopping Process

**1**
**Confirm the product**

**2**
**submit the order**

**3**
**payment**

**4**
**wait for delivery**

**5**
**receive the goods**

## Specifications

<b>Voltage - Threshold:</b>	4.1V
<b>Type:</b>	Simple Reset/Power-On Reset
<b>Supplier Device Package:</b>	SC-70-4
<b>Series:</b>	-
<b>Reset Timeout:</b>	1 ms Minimum
<b>Reset:</b>	Active High
<b>Packaging:</b>	Tape & Reel (TR)
<b>Package / Case:</b>	SC-82A, SOT-343
<b>Output:</b>	Push-Pull, Totem Pole
<b>Operating Temperature:</b>	-40°C ~ 125°C (TA)
<b>Number of Voltages Monitored:</b>	1
<b>Mounting Type:</b>	Surface Mount

## Related products


**MAX6385XS41D3-T**  
 IC MPU/RESET CIRC 4.10V SC70-4  
[Maxim Integrated](#)

RFQ


**MAX6385XS41D3-T**  
 in stock  
[MAXIM](#)

RFQ


**MAX6385XS40D7-T**  
 in stock  
[MAXIM](#)

RFQ


**MAX6385XS41D2-T**  
 IC MPU/RESET CIRC 4.10V SC70-4  
[Maxim Integrated](#)

RFQ


**MAX6385XS40D5-T**  
 IC MPU/RESET CIRC 4.00V SC70-4  
[Maxim Integrated](#)

RFQ


**MAX6385XS40D6-T**  
 IC MPU/RESET CIRC 4.00V SC70-4  
[Maxim Integrated](#)

RFQ


**MAX6385XS40D7-T**  
 IC MPU/RESET CIRC 4.00V SC70-4  
[Maxim Integrated](#)

RFQ


**MAX6385XS41D1-T**  
 in stock  
[MAXIM](#)

RFQ


**MAX6385XS41D2-T**  
 in stock  
[MAXIM](#)

RFQ


**MAX6385XS40D6-T**  
 in stock  
[MAXIM](#)

RFQ

## Guess You May Looking For


**RG3216P-9090-C-T5**  
 RES SMD 909 OHM 0.25% 1/4W 1206  
[Susumu](#)

RFQ


**CRA06S043620RJTA**  
 RES ARRAY 2 RES 620 OHM 0606  
[Vishay Dale](#)

RFQ


**4820P-1-510**  
 RES ARRAY 10 RES 51 OHM 20SOIC  
[Bourns Inc.](#)

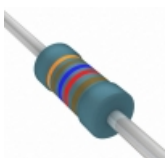
RFQ


**753163103GPTR7**  
 RES ARRAY 8 RES 10K OHM 16DRT  
[CTS Resistor Products](#)

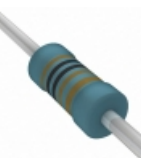
RFQ


**RNMF14FTC240R**  
 RES 240 OHM 1/4W 1% AXIAL  
[Stackpole Electronics Inc.](#)

RFQ


**MBB02070C3162FRP00**  
 RES 31.6K OHM 0.6W 1% AXIAL  
[Vishay BC Components](#)

RFQ


**MBA02040C1001FC100**  
 RES 1K OHM 0.4W 1% AXIAL  
[Vishay BC Components](#)

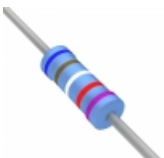
RFQ


**EP1W220RJ**  
 RES 220 OHM 1W 5% AXIAL  
[TE Connectivity Passive Product](#)

RFQ


**RN55C1652FR36**  
 RES 16.5K OHM 1/8W 1% AXIAL  
[Vishay Dale](#)

RFQ


**YR1B61K9CC**  
 RES 61.9K OHM 1/4W 0.1% AXIAL  
[TE Connectivity Passive Product](#)

RFQ