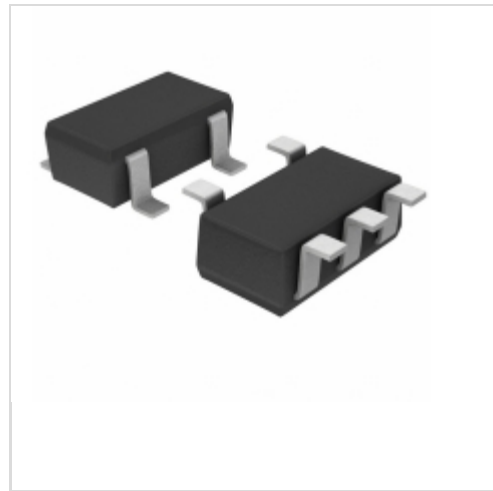


BD4836G-TR



LAPIS Semiconductor
IC RESET N-CH OD 3.6V 5SSOP
Lead free / RoHS Compliant
Integrated Circuits (ICs)

[BD4836G-TR.pdf](#)

Buy Now

Out Stock
0 pcs
Minimum:1
Multiples:100
Manufacturer lead time 10 weeks

PRICE	
3000 pcs	\$0.142
6000 pcs	\$0.133
15000 pcs	\$0.125
30000 pcs	\$0.114
65535 pcs	\$0.11

We can supply LAPIS Semiconductor BD4836G-TR, use the request quote form to request BD4836G-TR price, LAPIS Semiconductor Datasheet PDF and lead time. Zeanoit.com is a professional electronic components distributor. With 3+ Million line items of available electronic components can ship in short lead-time, over 250 thousand part numbers of electronic components in stock for immediately delivery, which may include part number BD4836G-TR. The price and lead time for BD4836G-TR depending on the quantity required, availability and warehouse location.

Shopping Process

1

Confirm the product

2

submit the order

3

payment

4

wait for delivery

5

receive the goods

Specifications

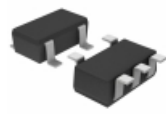
Voltage - Threshold:	3.6V
Type:	Simple Reset/Power-On Reset
Supplier Device Package:	5-SSOP
Series:	BD48xxx
Reset Timeout:	-
Reset:	Active Low
Packaging:	Tape & Reel (TR)
Package / Case:	SC-74A, SOT-753
Output:	Open Drain or Open Collector
Operating Temperature:	-40°C ~ 105°C (TA)
Number of Voltages Monitored:	1
Mounting Type:	Surface Mount

Related products



BD4835FVE-TR
IC DETECTOR VOLT 3.5V ODRN 5VSOF
[Rohm Semiconductor](#)

RFQ



BD4835G-TR
IC RESET N-CH OD 3.5V 5SSOP
[Rohm Semiconductor](#)

RFQ



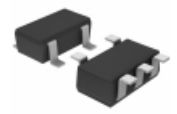
BD4838FVE-TR
IC DETECTOR VOLT 3.8V ODRN 5VSOF
[Rohm Semiconductor](#)

RFQ



BD4835G
[ROHM](#)

RFQ



BD4837G-TR
IC RESET N-CH OD 3.7V 5SSOP
[Rohm Semiconductor](#)

RFQ



BD4837FVE-TR
IC DETECTOR VOLT 3.7V ODRN 5VSOF
[Rohm Semiconductor](#)

RFQ



BD4838FVE
[ROHM](#)

RFQ



BD4836FVE
[ROHM](#)

RFQ



BD4836FVE-TR
IC DETECTOR VOLT 3.6V ODRN 5VSOF
[Rohm Semiconductor](#)

RFQ



BD4837G
[ROHM](#)

RFQ

Guess You May Looking For



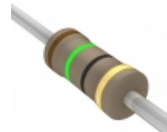
RG1608V-471-B-T1
RES SMD 470 OHM 0.1% 1/10W 0603
[Susumu](#)

RFQ



4116R-2-103LF
RES ARRAY 15 RES 10K OHM 16DIP
[Bourns Inc.](#)

RFQ



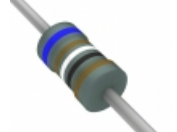
CFR-25JB-52-15R
RES 15 OHM 1/4W 5% AXIAL
[Yageo](#)

RFQ



43F39RE
RES 39 OHM 3W 1% AXIAL
[Ohmite](#)

RFQ



RNF12FTD619R
RES 619 OHM 1/2W 1% AXIAL
[Stackpole Electronics Inc.](#)

RFQ



ES05W100RJ
RES 100 OHM 1/2W 5% AXIAL
[TE Connectivity Passive Product](#)

RFQ



CMF55392K00FKEB
RES 392K OHM 1/2W 1% AXIAL
[Vishay Dale](#)

RFQ



CMF6051K100FKR6
RES 51.1K OHM 1W 1% AXIAL
[Vishay Dale](#)

RFQ



CMF5564R900DHRE
RES 64.9 OHM 1/2W .5% AXIAL
[Vishay Dale](#)

RFQ



RN60C1540FR36
RES 154 OHM 1/4W 1% AXIAL
[Vishay Dale](#)

RFQ