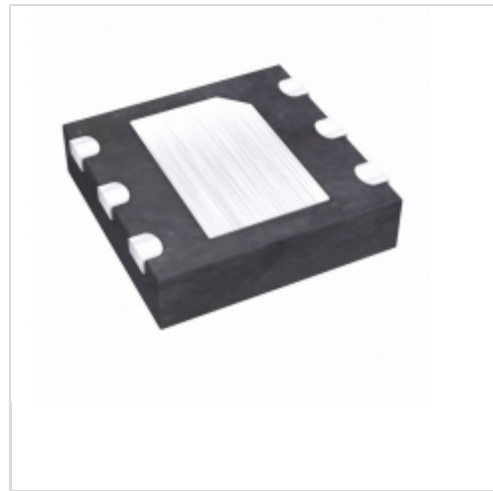


MAX16839ATT+T



Maxim Integrated

IC LED DRVR LIN DIM 100MA 6TDFN

Lead free / RoHS Compliant

Integrated Circuits (ICs)

1.MAX16839ATT+T.pdf

2.MAX16839ATT+T.pdf

Buy Now

Out Stock

0 pcs

Minimum:1

Multiples:100

Manufacturer lead time 10 weeks

We can supply MAX16839ATT+T, use the request quote form to request MAX16839ATT+T price and lead time. Zeano is a professional electronic components distributor. With 3+ Million line items of available electronic components can ship in short lead-time, over 250 thousand part numbers of electronic components in stock for immediately delivery, which may include part number MAX16839ATT+T. The price and lead time for MAX16839ATT+T depending on the quantity required and warehouse location. Contact us and our sales representative will provide you price. We look forward to work with you.

Shopping Process

1

Confirm the product

2

submit the order

3

payment

4

wait for delivery

5

receive the goods

Specifications

Voltage - Supply (Min):	5V
Voltage - Supply (Max):	40V
Voltage - Output:	-
Type:	Linear
Topology:	-
Supplier Device Package:	6-TDFN (3x3)
Series:	-
Packaging:	Tape & Reel (TR)
Package / Case:	6-WDFN Exposed Pad
Operating Temperature:	-40°C ~ 125°C (TA)
Number of Outputs:	1
Mounting Type:	Surface Mount
Internal Switch(s):	Yes
Frequency:	-
Dimming:	PWM
Current - Output / Channel:	100mA
Applications:	Automotive, Lighting, Signage

Related products



MAX1683C/D

in stock

[MAXIM](#)

RFQ

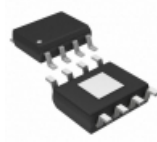


MAX16839EVKIT+

KIT EVAL FOR MAX16839

[Maxim Integrated](#)

RFQ



MAX16839ASA+

IC LED DRVR LIN DIM 100MA 8SOIC

[Maxim Integrated](#)

RFQ



MAX16838BATP+

IC LED DRIVER RGLTR DIM 14MFPS

[Maxim Integrated](#)

RFQ



MAX16838BAUP+

IC LED DRIVER RGLTR DIM 20TSSOP

[Maxim Integrated](#)

RFQ

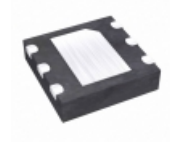


MAX1683EUK+

in stock

[MAXIM](#)

RFQ



MAX16839ATT+

IC LED DRVR LIN DIM 100MA 6TDFN

[Maxim Integrated](#)

RFQ



MAX1683EUK

[MAXIM](#)

RFQ



MAX16839ASA+T

IC LED DRVR LIN DIM 100MA 8SOIC

[Maxim Integrated](#)

RFQ



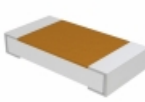
MAX1683EUK+T

IC REG SWITCHD CAP 2VIN SOT23

[Maxim Integrated](#)

RFQ

Guess You May Looking For



TNPW120621R0BEEA

RES SMD 21 OHM 0.1% 1/4W 1206

[Vishay Dale](#)

RFQ



ERJ-L1WUF44MU

RES SMD 0.044 OHM 1% 1W 2512

[Panasonic Electronic Components](#)

RFQ

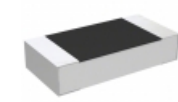


PAT0805E6731BST1

RES SMD 6.73K OHM 0.1% 1/5W 0805

[Vishay Thin Film](#)

RFQ



RP73D2B2K87BTDF

RES SMD 2.87K OHM 0.1% 1/4W 1206

[TE Connectivity Passive Product](#)

RFQ



HRG3216P-8061-B-T5

RES SMD 8.06K OHM 0.1% 1W 1206

[Susumu](#)

RFQ



SMM02070C4992DBP00

RES SMD 49.9K OHM 0.5% 1W MELF

[Vishay Beyschlag](#)

RFQ



RHC2512FT2K00

RES SMD 2K OHM 1% 2W 2512

[Stackpole Electronics Inc.](#)

RFQ



RT1206WRB075K9L

RES SMD 5.9K OHM 0.05% 1/4W 1206

[Yageo](#)

RFQ



SM6227FTR536

RES SMD 0.536 OHM 1% 3W 6227

[Stackpole Electronics Inc.](#)

RFQ



PHP00603E4530BBT1

RES SMD 453 OHM 0.1% 3/8W 0603

[Vishay Thin Film](#)

RFQ

