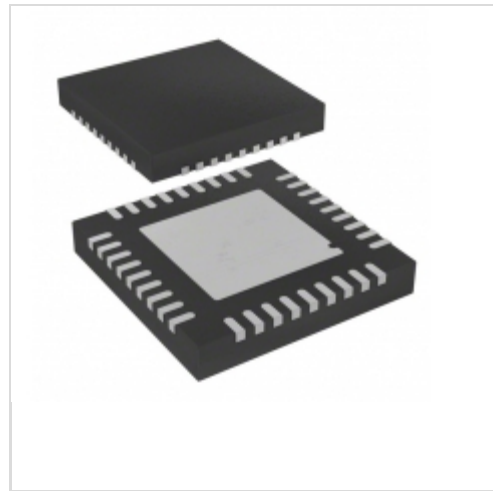


## BD6758MWV-E2



**LAPIS Semiconductor**

IC LENS DVR 5CH SYSTEM 36UQFN

Lead free / RoHS Compliant

Integrated Circuits (ICs)

[BD6758MWV-E2.pdf](#)

**Buy Now**

**Out Stock**

**0 pcs**

Minimum:1

Multiples:100

Manufacturer lead time 10 weeks

**PRICE**

2500 pcs

**\$1.616**

5000 pcs

**\$1.555**

Images are for reference only.

See Product Specifications for product details.

If you are interested to buy BD6758MWV-E2,Just Email us.

Sales@zeanoit.com

our sales team will reply you within 24 hours

### Shopping Process

**1**

**Confirm the product**

**2**

**submit the order**

**3**

**payment**

**4**

**wait for delivery**

**5**

**receive the goods**

### Specifications

<b>Voltage - Supply:</b>	2.5 V ~ 5.5 V
<b>Voltage - Load:</b>	2.5 V ~ 5.5 V
<b>Technology:</b>	CMOS
<b>Supplier Device Package:</b>	36-UQFN (5x5)
<b>Step Resolution:</b>	-
<b>Series:</b>	-
<b>Packaging:</b>	Tape & Reel (TR)
<b>Package / Case:</b>	36-VFQFN Exposed Pad
<b>Output Configuration:</b>	Half Bridge (10)
<b>Operating Temperature:</b>	-25°C ~ 150°C (TJ)
<b>Mounting Type:</b>	Surface Mount
<b>Motor Type - Stepper:</b>	-
<b>Motor Type - AC, DC:</b>	Brushed DC
<b>Interface:</b>	Parallel
<b>Function:</b>	Driver - Fully Integrated, Control and Power Stage
<b>Current - Output:</b>	500mA
<b>Applications:</b>	Camera

### Related products



**BD6755KN-E2**

[ROHM](#)

**RFQ**



**BD675G**

TRANS NPN DARL 45V 4A TO225

[ON Semiconductor](#)

**RFQ**



**BD6758KN-E2**

IC MOTOR DRIVER PAR 36VQFN

[Rohm Semiconductor](#)

**RFQ**



**BD6756GLV-E2**

[ROHM](#)

**RFQ**



**BD6754KN-E2**

IC MOTOR DRIVER SER 36-VQFN

[Rohm Semiconductor](#)

**RFQ**



**BD675AG**

TRANS NPN DARL 45V 4A TO225

[ON Semiconductor](#)

**RFQ**

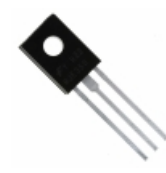


**BD6757KN-E2**

IC MOTOR DRIVER PAR 52-UQFN

[Rohm Semiconductor](#)

**RFQ**



**BD675AS**

TRANS NPN DARL 45V 4A TO-126

[Fairchild/ON Semiconductor](#)

**RFQ**



**BD675A**

TRANS NPN DARL 45V 4A TO225

[ON Semiconductor](#)

**RFQ**

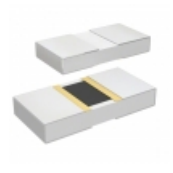


**BD675A-S**

[FSC](#)

**RFQ**

### Guess You May Looking For



**PHP00805H6571BST1**

RES SMD 6.57K OHM 0.1% 5/8W 0805

[Vishay Thin Film](#)

**RFQ**

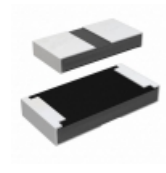


**PHP00805E6653BBT1**

RES SMD 665K OHM 0.1% 5/8W 0805

[Vishay Thin Film](#)

**RFQ**



**RCP1206W470RJS3**

RES SMD 470 OHM 5% 11W 1206

[Vishay Dale](#)

**RFQ**



**RG1608V-1211-W-T5**

RES SMD 1.21K OHM 1/10W 0603

[Susumu](#)

**RFQ**



**RG2012V-7680-B-T5**

RES SMD 768 OHM 0.1% 1/8W 0805

[Susumu](#)

**RFQ**



**RG3216V-6651-D-T5**

RES SMD 6.65K OHM 0.5% 1/4W 1206

[Susumu](#)

**RFQ**



**WSL27264L000FEA**

RES SMD 0.004 OHM 1% 3W 2726

[Vishay Dale](#)

**RFQ**

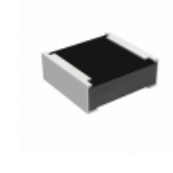


**RN73C2A470KBTG**

RES SMD 470K OHM 0.1% 1/10W 0805

[TE Connectivity Passive Product](#)

**RFQ**



**RCP0505B51R0JS3**

RES SMD 51 OHM 5% 5W 0505

[Vishay Dale](#)

**RFQ**



**RG2012V-5900-W-T1**

RES SMD 590 OHM 0.05% 1/8W 0805

[Susumu](#)

**RFQ**

