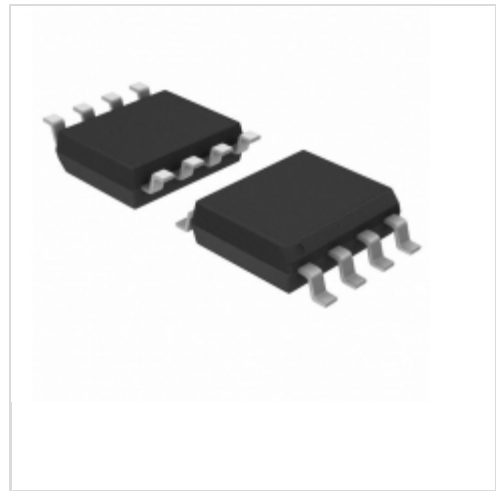


AT24C256N-10SC-1.8



Microchip Technology

IC EEPROM 256KBIT 400KHZ 8SOIC
Contains lead / RoHS non-compliant
Integrated Circuits (ICs)

[AT24C256N-10SC-1.8.pdf](#)

Buy Now

Images are for reference only.

See Product Specifications for product details.

If you are interested to buy AT24C256N-10SC-1.8, Just Email us.

Sales@zeanoit.com

our sales team will reply you within 24 hours

Shopping Process



1
Confirm the product



2
submit the order



3
payment



4
wait for delivery



5
receive the goods

Specifications

| | |
|---------------------------------|---------------------------------|
| Voltage - Supply: | 1.8 V ~ 3.6 V |
| Supplier Device Package: | 8-SOIC |
| Speed: | 400kHz |
| Series: | - |
| Packaging: | Tube |
| Package / Case: | 8-SOIC (0.154", 3.90mm Width) |
| Operating Temperature: | 0°C ~ 70°C (TA) |
| Memory Type: | Non-Volatile |
| Memory Size: | 256Kb (32K x 8) |
| Memory Format: | EEPROM |
| Interface: | I ² C, 2-Wire Serial |

Related products



AT24C256CN-SH-B

Two-wire Serial EEPROM 256K (32,768 x 8)
[ATMEL](#)

RFQ



AT24C256N-10SC-1.8

in stock
[ATMEL](#)

RFQ



AT24C256N

[ATMEL](#)

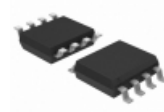
RFQ



AT24C256N-10SC

IC EEPROM 256KBIT 1MHZ 8SOIC
[Microchip Technology](#)

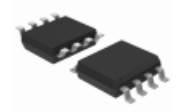
RFQ



AT24C256N-10SI

IC EEPROM 256KBIT 1MHZ 8SOIC
[Microchip Technology](#)

RFQ



AT24C256N-10SC-2.7

IC EEPROM 256KBIT 1MHZ 8SOIC
[Microchip Technology](#)

RFQ



AT24C256CN-SH-T

Two-wire Serial EEPROM 256K (32,768 x 8)
[ATMEL](#)

RFQ



AT24C256N-10SC

in stock
[ATMEL](#)

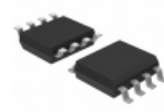
RFQ



AT24C256N-10SI-1.8

IC EEPROM 256KBIT 400KHZ 8SOIC
[Microchip Technology](#)

RFQ

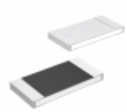


AT24C256N-10SI

in stock
[ATMEL](#)

RFQ

Guess You May Looking For



MCR25JZHJ271

RES SMD 270 OHM 5% 1/4W 1210
[Rohm Semiconductor](#)

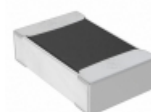
RFQ



MCR10ERTF1103

RES SMD 110K OHM 1% 1/8W 0805
[Rohm Semiconductor](#)

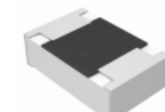
RFQ



RNCF0805TKY250R

RES SMD 250 OHM 0.01% 1/8W 0805
[Stackpole Electronics Inc.](#)

RFQ



ERJ-PB6B8662V

RES SMD 86.6K OHM 0.1% 1/4W 0805
[Panasonic Electronic Components](#)

RFQ



AR0805FR-075K62L

RES SMD 5.62K OHM 1% 1/8W 0805
[Yageo](#)

RFQ



CRCW06031K43FKEB

RES SMD 1.43K OHM 1% 1/10W 0603
[Vishay Dale](#)

RFQ



CRCW0603649RFKEB

RES SMD 649 OHM 1% 1/10W 0603
[Vishay Dale](#)

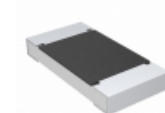
RFQ



RMCS0402FT49R9

RES SMD 49.9 OHM 1% 1/16W 0402
[Stackpole Electronics Inc.](#)

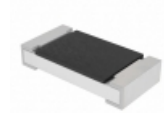
RFQ



CRCW20109M31FKEF

RES SMD 9.31M OHM 1% 3/4W 2010
[Vishay Dale](#)

RFQ



CRCW120671R5FKEAHP

RES SMD 71.5 OHM 1% 3/4W 1206
[Vishay Dale](#)

RFQ