

**BMI-S-206-F-H16**



**Laird Technologies - EMI**

BLS 2PSH FRM SNSAT TNR  
Lead free / RoHS Compliant  
RF/IF and RFID

- [1.BMI-S-206-F-H16.pdf](#)
- [2.BMI-S-206-F-H16.pdf](#)

**Buy Now**

**Out Stock**

**0 pcs**

Minimum:1

Multiples:100

Manufacturer lead time 10 weeks

We can supply BMI-S-206-F-H16, use the request quote form to request BMI-S-206-F-H16 price and lead time. Zeano is a professional electronic components distributor. With 3+ Million line items of available electronic components can ship in short lead-time, over 250 thousand part numbers of electronic components in stock for immediately delivery, which may include part number BMI-S-206-F-H16. The price and lead time for BMI-S-206-F-H16 depending on the quantity required and warehouse location. Contact us and our sales representative will provide you price. We look forward to work with you.

Shopping Process

**1**

**Confirm the product**

**2**

**submit the order**

**3**

**payment**

**4**

**wait for delivery**

**5**

**receive the goods**

Specifications

<b>Width - Overall:</b>	1.326" (33.68mm)
<b>Ventilation:</b>	-
<b>Type:</b>	Frame
<b>Series:</b>	-
<b>Packaging:</b>	Tape & Reel (TR)
<b>Mounting Type:</b>	Solder
<b>Length - Overall:</b>	1.450" (36.83mm)
<b>Height - Overall:</b>	0.200" (5.08mm)

Related products



**BMI-S-205-F**  
BOARD SHIELD 1.0X1.5" FRAME  
[Laird Technologies EMI](#)

**RFQ**



**BMI-S-206-C**  
BOARD SHIELD 1.326X1.45" COVER  
[Laird Technologies EMI](#)

**RFQ**



**BMI-S-206-F-H400**  
BLS 2PSH FRM SNSAT LP  
[Laird Technologies EMI](#)

**RFQ**



**BMI-S-207-C-.39DIA**  
BLS 2PSH CV SNSAT LP  
[Laird Technologies EMI](#)

**RFQ**



**BMI-S-206-C-H16**  
BLS 2PSH CV SNSAT LP  
[Laird Technologies EMI](#)

**RFQ**



**BMI-S-205-F-H400**  
SBS FRAM LP  
[Laird Technologies EMI](#)

**RFQ**



**BMI-S-206-F**  
BOARD SHIELD 1.326X1.45" FRAME  
[Laird Technologies EMI](#)

**RFQ**



**BMI-S-206-F-H8**  
BLS 2PSH FRM SNSAT TNR  
[Laird Technologies EMI](#)

**RFQ**



**BMI-S-207-F**  
BOARD SHIELD 1.747X1.747" FRAME  
[Laird Technologies EMI](#)

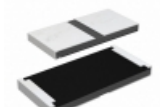
**RFQ**



**BMI-S-207-C**  
BOARD SHIELD 1.747X1.747" COVER  
[Laird Technologies EMI](#)

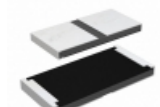
**RFQ**

Guess You May Looking For



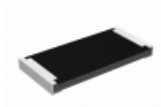
**RCP2512W200RGE**  
RES SMD 200 OHM 2% 22W 2512  
[Vishay Dale](#)

**RFQ**



**RCP2512W15R0GEC**  
RES SMD 15 OHM 2% 22W 2512  
[Vishay Dale](#)

**RFQ**



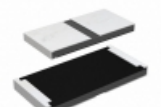
**RCP2512B110RJEC**  
RES SMD 110 OHM 5% 22W 2512  
[Vishay Dale](#)

**RFQ**



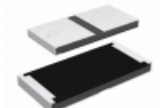
**RCP0505W10R0JS2**  
RES SMD 10 OHM 5% 5W 0505  
[Vishay Dale](#)

**RFQ**



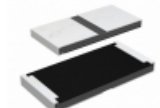
**RCP2512W1K20GEC**  
RES SMD 1.2K OHM 2% 22W 2512  
[Vishay Dale](#)

**RFQ**



**RCP2512W39R0JS2**  
RES SMD 39 OHM 5% 22W 2512  
[Vishay Dale](#)

**RFQ**



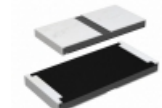
**RCP2512W51R0GEC**  
RES SMD 51 OHM 2% 22W 2512  
[Vishay Dale](#)

**RFQ**



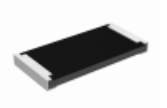
**MC102522504JE**  
RES SMD 2.5M OHM 5% 1.5W 5025  
[Ohmite](#)

**RFQ**



**RCP2512W27R0GEC**  
RES SMD 27 OHM 2% 22W 2512  
[Vishay Dale](#)

**RFQ**



**RCP2512B390RGS2**  
RES SMD 390 OHM 2% 22W 2512  
[Vishay Dale](#)

**RFQ**