

**ORLS090.V**



[Hamlin / Littelfuse](#)

FUSE CRTRDGE 90A 600VAC CYLINDR

Contains lead / RoHS non-compliant

Circuit Protection

[ORLS090.V.pdf](#)

**Buy Now**

part#ORLS090.V is available, see description of ORLS090.V as below .

use the request quote form to request ORLS090.V price and lead time.

Buy Electronic Components at zeanoit.com .we are an independent distributor of electronic components with extensive inventory in stock.

The price and lead time for ORLS090.V depending on the quantity required, availability and warehouse location.Contact us today and our sales team will send you quotation soon.

Email: sales@zeanoit.com

Shopping Process

**1**

Confirm the product

**2**

submit the order

**3**

payment

**4**

wait for delivery

**5**

receive the goods

Specifications

<b>Voltage Rating - DC:</b>	-
<b>Voltage Rating - AC:</b>	600V
<b>Size / Dimension:</b>	1.311" Dia x 5.874" L (33.30mm x 149.20mm)
<b>Series:</b>	POWR-GARD® RLS
<b>Response Time:</b>	Fast
<b>Packaging:</b>	Bulk
<b>Package / Case:</b>	Cylindrical, Blade Terminals
<b>Operating Temperature:</b>	-
<b>Mounting Type:</b>	Holder
<b>Melting I<sup>2</sup>t:</b>	-
<b>Fuse Type:</b>	Cartridge
<b>Features:</b>	-
<b>Current Rating:</b>	90A
<b>Class:</b>	H
<b>Breaking Capacity @ Rated Voltage:</b>	10kA
<b>Approvals:</b>	CE, CSA, UL
<b>Applications:</b>	Electrical, Industrial

Related products



**ORLS045.T**

FUSE CRTRDGE 45A 600VAC NON STD  
[Littelfuse Inc.](#)

RFQ



**ORLS125.X**

FUSE CRTRDGE 125A 600VAC CYLINDR  
[Littelfuse Inc.](#)

RFQ



**ORLS080.V**

FUSE CRTRDGE 80A 600VAC CYLINDR  
[Littelfuse Inc.](#)

RFQ



**ORLS150.X**

FUSE CRTRDGE 150A 600VAC CYLINDR  
[Littelfuse Inc.](#)

RFQ



**ORLS175.X**

FUSE CRTRDGE 175A 600VAC CYLINDR  
[Littelfuse Inc.](#)

RFQ



**ORLS100.V**

FUSE CRTRDGE 100A 600VAC CYLINDR  
[Littelfuse Inc.](#)

RFQ



**ORLS070.V**

FUSE CRTRDGE 70A 600VAC CYLINDR  
[Littelfuse Inc.](#)

RFQ



**ORLS060.T**

FUSE CRTRDGE 60A 600VAC NON STD  
[Littelfuse Inc.](#)

RFQ



**ORLS110.X**

FUSE CRTRDGE 110A 600VAC CYLINDR  
[Littelfuse Inc.](#)

RFQ



**ORLS050.T**

FUSE CRTRDGE 50A 600VAC NON STD  
[Littelfuse Inc.](#)

RFQ

Guess You May Looking For



**FMG-211**

FMG FUSEHOLDER TRANSPORTATION  
FU  
[Eaton](#)

RFQ



**L60030C3PQDINR**

FUSE BLOK CART 600V 30A DIN RAIL  
[Littelfuse Inc.](#)

RFQ



**HBH-I-R**

FUSE HLDR CARTRIDGE 250V 16A PCB  
[Eaton](#)

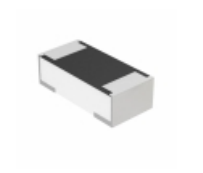
RFQ



**3SB 15-R**

FUSE GLASS 15A 125VAC 3AB 3AG  
[Bel Fuse Inc.](#)

RFQ



**MFU0402FF01500E100**

FUSE BOARD MOUNT 1.5A 32VDC 0402  
[Vishay Beyschlag](#)

RFQ



**0698Q6300-02**

FUSE 6.3A 350V RADIAL  
[Bel Fuse Inc.](#)

RFQ



**043701.5WR**

FUSE BRD MNT 1.5A 63VAC/VDC 1206  
[Littelfuse Inc.](#)

RFQ



**0213.400MXP**

FUSE GLASS 400MA 250VAC 5X20MM  
[Littelfuse Inc.](#)

RFQ



**0034.6051**

FUSE BOARD MOUNT 5A 250VAC RAD  
[Schurter Inc.](#)

RFQ



**37001250000**

FUSE BRD MNT 125MA 250VAC RADIAL  
[Littelfuse Inc.](#)

RFQ