

## AH9280Z4-G1



[Diodes Incorporated](#)

IC MOTOR DRIVER ON/OFF TO-94

Lead free / RoHS Compliant

Integrated Circuits (ICs)

[AH9280Z4-G1.pdf](#)

[Buy Now](#)

**Out Stock**

**0 pcs**

Minimum:1

Multiples:100

Manufacturer lead time 10 weeks

We can supply Diodes Incorporated AH9280Z4-G1, use the request quote form to request AH9280Z4-G1 price, Diodes Incorporated Datasheet PDF and lead time. Zeanoit.com is a professional electronic components distributor. With 3+ Million line items of available electronic components can ship in short lead-time, over 250 thousand part numbers of electronic components in stock for immediately delivery, which may include part number AH9280Z4-G1. The price and lead time for AH9280Z4-G1 depending on the quantity required, availability and warehouse location.

### Shopping Process

**1**

Confirm the product

**2**

submit the order

**3**

payment

**4**

wait for delivery

**5**

receive the goods

### Specifications

<b>Voltage - Supply:</b>	2.5 V ~ 16 V
<b>Voltage - Load:</b>	2.5 V ~ 16 V
<b>Technology:</b>	CMOS, Power MOSFET
<b>Supplier Device Package:</b>	TO-94
<b>Step Resolution:</b>	-
<b>Series:</b>	-
<b>Packaging:</b>	Bulk
<b>Package / Case:</b>	4-SIP
<b>Output Configuration:</b>	Low Side (2)
<b>Operating Temperature:</b>	-40°C ~ 125°C (TA)
<b>Mounting Type:</b>	Through Hole
<b>Motor Type - Stepper:</b>	-
<b>Motor Type - AC, DC:</b>	Brushless DC (BLDC)
<b>Interface:</b>	On/Off
<b>Function:</b>	Driver - Fully Integrated, Control and Power Stage
<b>Current - Output:</b>	600mA
<b>Applications:</b>	Fan Motor Driver

### Related products



**AH9279Z4-G1**  
IC MOTOR DRIVER ON/OFF TO-94  
[Diodes Incorporated](#)

RFQ



**AH9480M8TR-G1**  
IC BLDC MOTOR DRIVER 8MSOP  
[Diodes Incorporated](#)

RFQ



**AH9251-W-7**  
MAGNETIC SWITCH OMNIPOLAR SC59  
[Diodes Incorporated](#)

RFQ



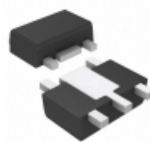
**AH9250-W-7**  
MAGNETIC SWITCH OMNIPOLAR SC59  
[Diodes Incorporated](#)

RFQ



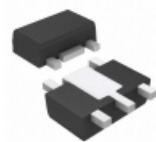
**AH9251-P-B**  
MAGNETIC SWITCH OMNIPOLAR TO92S  
[Diodes Incorporated](#)

RFQ



**AH9282RTR-G1**  
IC MOTOR DRIVER PAR SOT89-5  
[Diodes Incorporated](#)

RFQ



**AH9281RTR-G1**  
IC MOTOR DRIVER PAR SOT89-5  
[Diodes Incorporated](#)

RFQ



**AH9250-P-B**  
MAGNETIC SWITCH OMNIPOLAR TO92S  
[Diodes Incorporated](#)

RFQ



**AH9281Z5-G1**  
[BCD](#)

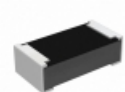
RFQ



**AH9481M8TR-G1**  
IC BLDC MOTOR DRIVER 8MSOP  
[Diodes Incorporated](#)

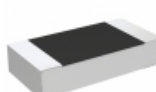
RFQ

### Guess You May Looking For



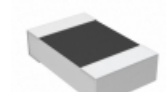
**RCP0603B2K00JEA**  
RES SMD 2K OHM 5% 3.9W 0603  
[Vishay Dale](#)

RFQ



**RP73D2B665RBTG**  
RES SMD 665 OHM 0.1% 1/4W 1206  
[TE Connectivity Passive Product](#)

RFQ



**RP73D2A124RBTG**  
RES SMD 124 OHM 0.1% 1/8W 0805  
[TE Connectivity Passive Product](#)

RFQ



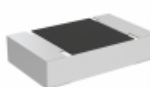
**RP73D1J88K7BTG**  
RES SMD 88.7KOHM 0.1% 1/10W 0603  
[TE Connectivity Passive Product](#)

RFQ



**RG1608V-1871-W-T5**  
RES SMD 1.87K OHM 1/10W 0603  
[Susumu](#)

RFQ



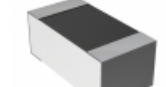
**TNPU080525K5BZEN00**  
RES SMD 25.5K OHM 0.1% 1/8W 0805  
[Vishay Dale](#)

RFQ



**RG1005V-102-B-T5**  
RES SMD 1K OHM 0.1% 1/16W 0402  
[Susumu](#)

RFQ



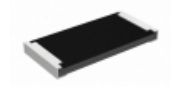
**RN73C1J1K47BTG**  
RES SMD 1.47KOHM 0.1% 1/16W 0603  
[TE Connectivity Passive Product](#)

RFQ



**RG1608V-202-W-T1**  
RES SMD 2K OHM 0.05% 1/10W 0603  
[Susumu](#)

RFQ



**RCP2512B36R0GEA**  
RES SMD 36 OHM 2% 22W 2512  
[Vishay Dale](#)

RFQ

