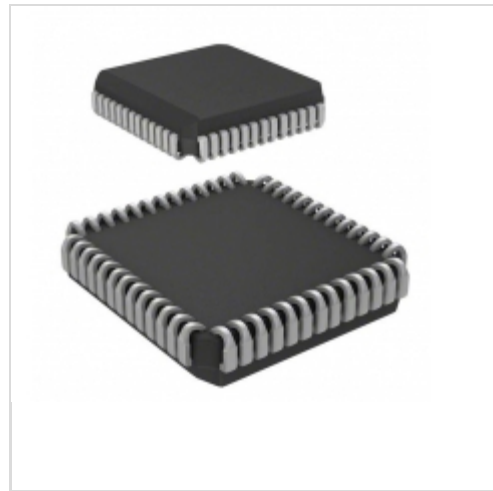


## 7142LA25JI



### IDT (Integrated Device Technology)

IC SRAM 16KBIT 25NS 52PLCC  
Contains lead / RoHS non-compliant  
Integrated Circuits (ICs)

[7142LA25JI.pdf](#)

**Buy Now**

**Out Stock**

**0 pcs**

Minimum:1

Multiples:100

Manufacturer lead time 10 weeks

part#7142LA25JI is available, see description of 7142LA25JI as below .  
use the request quote form to request 7142LA25JI price and lead time.  
Buy Electronic Components at zeanoit.com .we are an independent distributor of electronic components with extensive inventory in stock.  
The price and lead time for 7142LA25JI depending on the quantity required, availability and warehouse location.Contact us today and our sales team will send you quotation soon.  
Email: sales@zeanoit.com

### Shopping Process

**1**

**Confirm the product**

**2**

**submit the order**

**3**

**payment**

**4**

**wait for delivery**

**5**

**receive the goods**

### Specifications

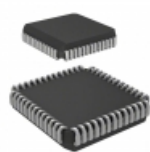
<b>Voltage - Supply:</b>	4.5 V ~ 5.5 V
<b>Supplier Device Package:</b>	52-PLCC (19x19)
<b>Speed:</b>	25ns
<b>Series:</b>	-
<b>Packaging:</b>	Tube
<b>Package / Case:</b>	52-LCC (J-Lead)
<b>Operating Temperature:</b>	-40°C ~ 85°C (TA)
<b>Memory Type:</b>	Volatile
<b>Memory Size:</b>	16Kb (2K x 8)
<b>Memory Format:</b>	SRAM
<b>Interface:</b>	Parallel

### Related products



**7142LA25JI8**  
IC SRAM 16KBIT 25NS 52PLCC  
[IDT, Integrated Device Technology Inc](#)

**RFQ**



**7142LA20J8**  
IC SRAM 16KBIT 20NS 52PLCC  
[IDT, Integrated Device Technology Inc](#)

**RFQ**



**7142LA20JG**  
IC SRAM 16KBIT 20NS 52PLCC  
[IDT, Integrated Device Technology Inc](#)

**RFQ**



**7142LA35C**  
IC SRAM 16KBIT 35NS 48DIP  
[IDT, Integrated Device Technology Inc](#)

**RFQ**



**7142LA35CB**  
IC SRAM 16KBIT 35NS SB48  
[IDT, Integrated Device Technology Inc](#)

**RFQ**



**7142LA25J**  
IC SRAM 16KBIT 25NS 52PLCC  
[IDT, Integrated Device Technology Inc](#)

**RFQ**



**7142LA25J8**  
IC SRAM 16KBIT 25NS 52PLCC  
[IDT, Integrated Device Technology Inc](#)

**RFQ**



**7142LA35J**  
IC SRAM 16KBIT 35NS 52PLCC  
[IDT, Integrated Device Technology Inc](#)

**RFQ**



**7142LA20JG8**  
IC SRAM 16KBIT 20NS 52PLCC  
[IDT, Integrated Device Technology Inc](#)

**RFQ**



**7142LA35J8**  
IC SRAM 16KBIT 35NS 52PLCC  
[IDT, Integrated Device Technology Inc](#)

**RFQ**

### Guess You May Looking For



**HVF1206T7504FE**  
RES SMD 7.5M OHM 1% 0.3W 1206  
[Ohmite](#)

**RFQ**



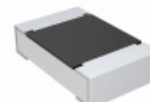
**CR1206-JW-151ELF**  
RES SMD 150 OHM 5% 1/4W 1206  
[Bourns Inc.](#)

**RFQ**



**RNCf0805BTE10K4**  
RES SMD 10.4K OHM 0.1% 1/8W 0805  
[Stackpole Electronics Inc.](#)

**RFQ**



**CRCW08053R09FNEA**  
RES SMD 3.09 OHM 1% 1/8W 0805  
[Vishay Dale](#)

**RFQ**



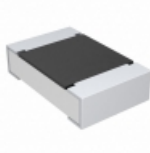
**CRGH0805F2K26**  
RES SMD 2.26K OHM 1% 1/3W 0805  
[TE Connectivity Passive Product](#)

**RFQ**



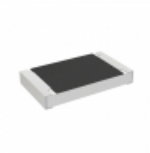
**RR1220P-7873-D-M**  
RES SMD 787K OHM 0.5% 1/10W 0805  
[Susumu](#)

**RFQ**



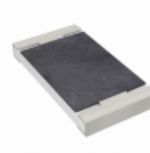
**CRCW080549R9FKTB**  
RES SMD 49.9 OHM 1% 1/8W 0805  
[Vishay Dale](#)

**RFQ**



**RCS0805221KFKEA**  
RES SMD 221K OHM 1% 0.4W 0805  
[Vishay Dale](#)

**RFQ**



**AC2010JK-0715KL**  
RES SMD 15K OHM 5% 3/4W 2010  
[Yageo](#)

**RFQ**



**CRGS1206J1K8**  
RES SMD 1.8K OHM 5% 0.6W 1206  
[TE Connectivity AMP Connectors](#)

**RFQ**