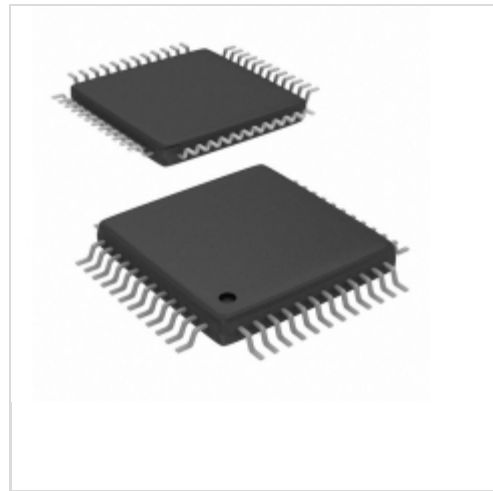


90E36AERGI8



[Microchip Technology](#)

IC ENERGY POLYPH METER 48-TQFP

Lead free / RoHS Compliant

Integrated Circuits (ICs)

[90E36AERGI8.pdf](#)

[Buy Now](#)

Images are for reference only.

See Product Specifications for product details.

If you are interested to buy 90E36AERGI8, Just Email us.

Sales@zeanoit.com

our sales team will reply you within 24 hours

Shopping Process

1

Confirm the product

2

submit the order

3

payment

4

wait for delivery

5

receive the goods

Specifications

Voltage - Supply:	2.8 V ~ 3.6 V
Voltage - I/O Low:	0.4V, 0.8V
Voltage - I/O High:	2.8V, 3.6V
Supplier Device Package:	48-TQFP (7x7)
Series:	-
Packaging:	Tape & Reel (TR)
Package / Case:	48-TQFP
Operating Temperature:	-40°C ~ 85°C
Mounting Type:	Surface Mount
Meter Type:	3 Phase
Measurement Error:	0.5%
Input Impedance:	50 kOhm, 80 kOhm, 120 kOhm
Current - Supply:	23mA

Related products



90E32ERGI8
IC ENERGY POLYPH METER 48-TQFP
[Microchip Technology](#)

[RFQ](#)



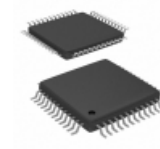
90E46EMGI
IC ENERGY POLYPH METER 100-TQFP
[IDT, Integrated Device Technology Inc](#)

[RFQ](#)



90E36ERGI
IC ENERGY POLYPH METER 48-TQFP
[Microchip Technology](#)

[RFQ](#)



90E36AERGI
IC ENERGY POLYPH METER 48-TQFP
[Microchip Technology](#)

[RFQ](#)



90E36ERGI8
IC ENERGY POLYPH METER 48-TQFP
[IDT, Integrated Device Technology Inc](#)

[RFQ](#)



90E36ERGI8
IC ENERGY POLYPH METER 48-TQFP
[Microchip Technology](#)

[RFQ](#)



90E36AERGI8
IC ENERGY POLYPH METER 48-TQFP
[IDT, Integrated Device Technology Inc](#)

[RFQ](#)



90E36AERGI
IC ENERGY POLYPH METER 48-TQFP
[IDT, Integrated Device Technology Inc](#)

[RFQ](#)



90E36ERGI
IC ENERGY POLYPH METER 48-TQFP
[IDT, Integrated Device Technology Inc](#)

[RFQ](#)



90E32ERGI8
IC ENERGY POLYPH METER 48-TQFP
[IDT, Integrated Device Technology Inc](#)

[RFQ](#)

Guess You May Looking For



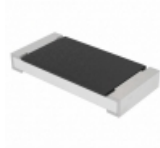
RT0603BRB074K99L
RES SMD 4.99KOHM 0.1% 1/10W 0603
[Yageo](#)

[RFQ](#)



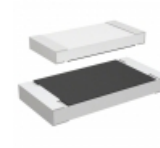
RT0603BRB0769R8L
RES SMD 69.8 OHM 0.1% 1/10W 0603
[Yageo](#)

[RFQ](#)



CRCW20102K74FKEFHP
RES SMD 2.74K OHM 1% 1W 2010
[Vishay Dale](#)

[RFQ](#)



RCWL2010R160JNEA
RES SMD 0.16 OHM 5% 1/2W 2010
[Vishay Dale](#)

[RFQ](#)



RG3216N-2201-D-T5
RES SMD 2.2K OHM 0.5% 1/4W 1206
[Susumu](#)

[RFQ](#)



RNCF2512DKE47R5
RES SMD 47.5 OHM 0.5% 1W 2512
[Stackpole Electronics Inc.](#)

[RFQ](#)



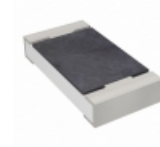
RNCF2512DKE732K
RES SMD 732K OHM 0.5% 1/2W 2512
[Stackpole Electronics Inc.](#)

[RFQ](#)



RT1206CRD071R05L
RES SMD 1.05 OHM 0.25% 1/4W 1206
[Yageo](#)

[RFQ](#)



RT1206CRD071R47L
RES SMD 1.47 OHM 0.25% 1/4W 1206
[Yageo](#)

[RFQ](#)



RG1005N-2212-D-T10
RES SMD 22.1KOHM 0.5% 1/16W 0402
[Susumu](#)

[RFQ](#)