

MCF5206EAB54



[NXP Semiconductors / Freescale](#)

IC MCU 32BIT ROMLESS 160QFP

Lead free / RoHS Compliant

Integrated Circuits (ICs)

[1.MCF5206EAB54.pdf](#)

[2.MCF5206EAB54.pdf](#)

[3.MCF5206EAB54.pdf](#)

Buy Now

In Stock

161 pcs

Minimum:1

Multiples:100

Manufacturer lead time 10 weeks

PRICE

1 pcs	\$27.10
10 pcs	\$24.991
100 pcs	\$21.341
500 pcs	\$19.375

Images are for reference only.

See Product Specifications for product details.

If you are interested to buy MCF5206EAB54,Just Email us.

Sales@zeanoit.com

our sales team will reply you within 24 hours

Shopping Process

1

Confirm the product

2

submit the order

3

payment

4

wait for delivery

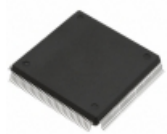
5

receive the goods

Specifications

Voltage - Supply (Vcc/Vdd):	3 V ~ 3.6 V
Supplier Device Package:	160-QFP (28x28)
Speed:	54MHz
Series:	MCF520x
RAM Size:	8K x 8
Program Memory Type:	ROMless
Program Memory Size:	-
Peripherals:	DMA, WDT
Packaging:	Tray
Package / Case:	160-BQFP
Oscillator Type:	External
Operating Temperature:	0°C ~ 70°C (TA)
Number of I/O:	8
EEPROM Size:	-
Data Converters:	-
Core Size:	32-Bit
Core Processor:	Coldfire V2
Connectivity:	EBI/EMI, I ² C, UART/USART

Related products

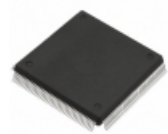


MCF5206ECT40

IC MCU 32BIT ROMLESS 160QFP

[NXP USA Inc.](#)

RFQ



MCF5206CAB25A

IC MCU 32BIT ROMLESS 160QFP

[NXP USA Inc.](#)

RFQ



MCF5206FT16

[MOTOROLA](#)

RFQ

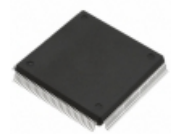


MCF5206E

in stock

[FREESCALE](#)

RFQ

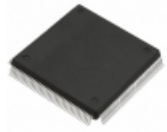


MCF5206ECAB40

IC MCU 32BIT ROMLESS 160QFP

[NXP USA Inc.](#)

RFQ



MCF5206EAB40

IC MCU 32BIT ROMLESS 160QFP

[NXP USA Inc.](#)

RFQ

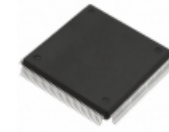


MCF5206CAB16A

IC MCU 32BIT ROMLESS 160QFP

[NXP USA Inc.](#)

RFQ

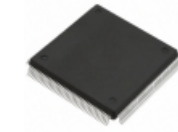


MCF5206EFT54

IC MCU 32BIT ROMLESS 160QFP

[NXP USA Inc.](#)

RFQ

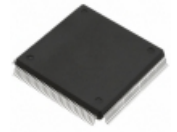


MCF5206EFT40

IC MCU 32BIT ROMLESS 160QFP

[NXP USA Inc.](#)

RFQ



MCF5206AB33A

IC MCU 32BIT ROMLESS 160QFP

[NXP USA Inc.](#)

RFQ

Guess You May Looking For

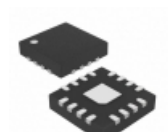


LYT4312E

IC LED DRIVER OFFL DIM ESIP-7C

[Power Integrations](#)

RFQ

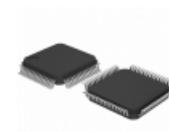


MAX17498CATE+

IC OFF-LINE CONVERTER 16TQFN

[Maxim Integrated](#)

RFQ



IRMCK341TR

IC MOTOR CONTRLLR I2C/SPI 64MQFP

[Infineon Technologies](#)

RFQ



TPS22914BYFPR

IC LOAD SWITCH 5.5V 4DSBGA

[Texas Instruments](#)

RFQ



S-80917CLPF-G6MTFU

IC VOLT DETECTOR 1.7V SNT-4A

[SII Semiconductor Corporation](#)

RFQ

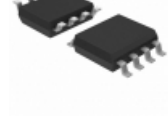


PT7M6314US29D1TBEX

IC SUPERVISOR 2.9V SOT143-4

[Diodes Incorporated](#)

RFQ



ISL88707IB846Z

IC SUPERVISOR 4.64V 8-SOIC

[Intersil](#)

RFQ



ZRT025GA1TA

IC VREF SHUNT 2.5V SOT223

[Diodes Incorporated](#)

RFQ



LM22674MR-5.0/NOPB

IC REG BUCK 5V 0.5A 8SOPWRPAD

[Texas Instruments](#)

RFQ



AZ1117EH-1.2TRG1

IC REG LDO 1.2V 1A SOT223

[Diodes Incorporated](#)

RFQ

