

EHF-FD1722



Panasonic
DIRECT COUPLER W/LC 880MHZ 16DB
Contains lead / RoHS non-compliant
RF/IF and RFID

Buy Now

part#EHF-FD1722 is available, see description of EHF-FD1722 as below .
use the request quote form to request EHF-FD1722 price and lead time.
Buy Electronic Components at zeanoit.com .we are an independent distributor of electronic components with extensive inventory in stock.
The price and lead time for EHF-FD1722 depending on the quantity required, availability and warehouse location.Contact us today and our sales team will send you quotation soon.
Email: sales@zeanoit.com

Shopping Process



1
Confirm the product



2
submit the order



3
payment



4
wait for delivery



5
receive the goods

Specifications

Supplier Device Package:	-
Series:	-
Return Loss:	-
Power - Max:	-
Packaging:	Bulk
Package / Case:	-
Isolation:	25dB
Insertion Loss:	0.4dB
Frequency:	880MHz
Coupling Factor:	16dB
Coupler Type:	Standard
Applications:	-

Related products

Panasonic

EHF-FD1629
BALUN 1700-2000 MHZ 50/50 OHM
[Panasonic Electronic Components](#)

RFQ

Panasonic

EHF-FD1736
DIRECTIONAL COUPLER 800MHZ 14DB
[Panasonic Electronic Components](#)

RFQ



EHF-FD1729
COUPLER DIRECTIONAL WITH FILTER
[Panasonic Electronic Components](#)

RFQ



EHF-FD1728
COUPLER DIRECTIONAL WITH FILTER
[Panasonic Electronic Components](#)

RFQ

Panasonic

EHF-FD1724
DIRECT COUPLER W/LC 824MHZ 17DB
[Panasonic Electronic Components](#)

RFQ



EHF-FD1626
BALUN HYBRID 1700-1900MHZ 1:4
[Panasonic Electronic Components](#)

RFQ

Panasonic

EHF-FD1631
BALUN DUAL 1800-2000 MHZ 1:1
[Panasonic Electronic Components](#)

RFQ

Panasonic

EHF-FD1735
DIRECTIONAL COUPLER 1850MHZ 14DB
[Panasonic Electronic Components](#)

RFQ

Panasonic

EHF-FD1624B
BALUN HYBRID 1600-1950 MHZ 1:4
[Panasonic Electronic Components](#)

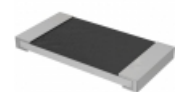
RFQ

Panasonic

EHF-FD1624
BALUN HYBRID 3400-4000MHZ 1:4
[Panasonic Electronic Components](#)

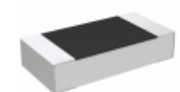
RFQ

Guess You May Looking For



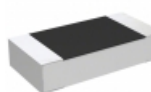
RHC2512FT1R15
RES SMD 1.15 OHM 1% 2W 2512
[Stackpole Electronics Inc.](#)

RFQ



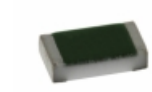
RP73D2B30R9BTDF
RES SMD 30.9 OHM 0.1% 1/4W 1206
[TE Connectivity Passive Product](#)

RFQ



RP73D2B511RBTDF
RES SMD 511 OHM 0.1% 1/4W 1206
[TE Connectivity Passive Product](#)

RFQ



TNPW060313R7BEEN
RES SMD 13.7 OHM 0.1% 1/10W 0603
[Vishay Dale](#)

RFQ



TNPW1206102RBEEN
RES SMD 102 OHM 0.1% 1/4W 1206
[Vishay Dale](#)

RFQ



SM4124FT205R
RES SMD 205 OHM 1% 2W 4124
[Stackpole Electronics Inc.](#)

RFQ



SM4124FT5R11
RES SMD 5.11 OHM 1% 2W 4124
[Stackpole Electronics Inc.](#)

RFQ



SM4124FT274R
RES SMD 274 OHM 1% 2W 4124
[Stackpole Electronics Inc.](#)

RFQ



SM4124FT86R6
RES SMD 86.6 OHM 1% 2W 4124
[Stackpole Electronics Inc.](#)

RFQ



HRG3216P-9090-B-T5
RES SMD 909 OHM 0.1% 1W 1206
[Susumu](#)

RFQ