

## MAX6865UK44D2S+T



[Maxim Integrated](#)

IC MPU SUPERVISOR SOT23-5

Lead free / RoHS Compliant

Integrated Circuits (ICs)

[1.MAX6865UK44D2S+T.pdf](#)

[2.MAX6865UK44D2S+T.pdf](#)

[Buy Now](#)

We can supply Maxim Integrated MAX6865UK44D2S+T, use the request quote form to request MAX6865UK44D2S+T price, Maxim Integrated Datasheet PDF and lead time. Zeanoit.com is a professional electronic components distributor. With 3+ Million line items of available electronic components can ship in short lead-time, over 250 thousand part numbers of electronic components in stock for immediately delivery, which may include part number MAX6865UK44D2S+T. The price and lead time for MAX6865UK44D2S+T depending on the quantity required, availability and warehouse location.

### Shopping Process



**1**  
Confirm the product



**2**  
submit the order



**3**  
payment



**4**  
wait for delivery



**5**  
receive the goods

### Specifications

<b>Voltage - Threshold:</b>	4.375V
<b>Type:</b>	Simple Reset/Power-On Reset
<b>Supplier Device Package:</b>	SOT-23-5
<b>Series:</b>	-
<b>Reset Timeout:</b>	40 ms Minimum
<b>Reset:</b>	Active High
<b>Packaging:</b>	Tape & Reel (TR)
<b>Package / Case:</b>	SC-74A, SOT-753
<b>Output:</b>	Push-Pull, Totem Pole
<b>Operating Temperature:</b>	-40°C ~ 85°C (TA)
<b>Number of Voltages Monitored:</b>	1
<b>Mounting Type:</b>	Surface Mount

### Related products



**MAX6865UK44D1L+T**  
IC MPU SUPERVISOR SOT23-5  
[Maxim Integrated](#)

[RFQ](#)



**MAX6865UK44D4L+T**  
IC MPU SUPERVISOR SOT23-5  
[Maxim Integrated](#)

[RFQ](#)



**MAX6865UK44D1S+T**  
IC MPU SUPERVISOR SOT23-5  
[Maxim Integrated](#)

[RFQ](#)



**MAX6865UK44D2L+T**  
IC MPU SUPERVISOR SOT23-5  
[Maxim Integrated](#)

[RFQ](#)



**MAX6865UK44D3S+T**  
IC MPU SUPERVISOR SOT23-5  
[Maxim Integrated](#)

[RFQ](#)



**MAX6865UK43D6S+T**  
IC MPU SUPERVISOR SOT23-5  
[Maxim Integrated](#)

[RFQ](#)



**MAX6865UK44D4S+T**  
IC MPU SUPERVISOR SOT23-5  
[Maxim Integrated](#)

[RFQ](#)



**MAX6865UK44D5L+T**  
IC MPU SUPERVISOR SOT23-5  
[Maxim Integrated](#)

[RFQ](#)



**MAX6865UK43D6L+T**  
IC MPU SUPERVISOR SOT23-5  
[Maxim Integrated](#)

[RFQ](#)



**MAX6865UK44D3L+T**  
IC MPU SUPERVISOR SOT23-5  
[Maxim Integrated](#)

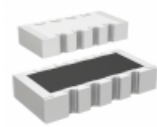
[RFQ](#)

### Guess You May Looking For



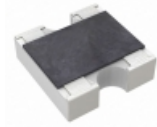
**RG2012P-61R9-W-T1**  
RES SMD 61.9 OHM 0.05% 1/8W 0805  
[Susumu](#)

[RFQ](#)



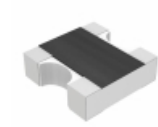
**CAY16-471J4LF**  
RES ARRAY 4 RES 470 OHM 1206  
[Bourns Inc.](#)

[RFQ](#)



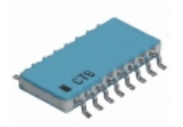
**YC162-FR-07158RL**  
RES ARRAY 2 RES 158 OHM 0606  
[Yageo](#)

[RFQ](#)



**CRA06P04312R0JTA**  
RES ARRAY 2 RES 12 OHM 0606  
[Vishay Dale](#)

[RFQ](#)



**768161202GP**  
RES ARRAY 15 RES 2K OHM 16SOIC  
[CTS Resistor Products](#)

[RFQ](#)



**ERG-1FJS471E**  
RES 470 OHM 1W 5% AXIAL  
[Panasonic Electronic Components](#)

[RFQ](#)



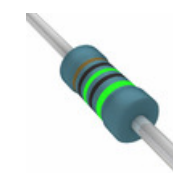
**20J680E**  
RES 680 OHM 10W 5% AXIAL  
[Ohmite](#)

[RFQ](#)



**CMF553K4000FHEA**  
RES 3.4K OHM 1/2W 1% AXIAL  
[Vishay Dale](#)

[RFQ](#)



**MBB02070C1050DC100**  
RES 105 OHM 0.6W 0.5% AXIAL  
[Vishay BC Components](#)

[RFQ](#)



**CMF552K1500DHEB**  
RES 2.15K OHM 1/2W 0.5% AXIAL  
[Vishay Dale](#)

[RFQ](#)