

TLE7234EMXUMA1



International Rectifier (Infineon Technologies)

IC DRIVER SPI RELAY CTRL 24SSOP

Lead free / RoHS Compliant

Integrated Circuits (ICs)

[TLE7234EMXUMA1.pdf](#)

Buy Now

We can supply TLE7234EMXUMA1, use the request quote form to request TLE7234EMXUMA1 price and lead time. Zeano is a professional electronic components distributor. With 3+ Million line items of available electronic components can ship in short lead-time, over 250 thousand part numbers of electronic components in stock for immediately delivery, which may include part number TLE7234EMXUMA1. The price and lead time for TLE7234EMXUMA1 depending on the quantity required and warehouse location. Contact us and our sales representative will provide you price. We look forward to work with you.

Out Stock

0 pcs

Minimum: 1

Multiples: 100

Manufacturer lead time 10 weeks

Shopping Process

1

Confirm the product

2

submit the order

3

payment

4

wait for delivery

5

receive the goods

Specifications

Voltage - Supply (Vcc/Vdd):	3 V ~ 5.5 V
Voltage - Load:	9 V ~ 16 V
Switch Type:	General Purpose
Supplier Device Package:	PG-SSOP-24
Series:	-
Rds On (Typ):	900 mOhm, 1.6 Ohm
Ratio - Input:Output:	3:8
Packaging:	Tape & Reel (TR)
Package / Case:	24-LSSOP (0.154", 3.90mm Width)
Output Type:	N-Channel
Output Configuration:	High Side or Low Side
Operating Temperature:	-40°C ~ 150°C (TJ)
Number of Outputs:	8
Interface:	SPI
Input Type:	-
Features:	-
Fault Protection:	Open Load Detect, Over Temperature
Current - Output (Max):	175mA, 350mA

Related products



TLE7234G

IC DRIVER SPI 8CH HS/LS DSO-20
[Infineon Technologies](#)

RFQ



TLE7232GXUMA1

IC SPI DRIVER RELAY CTRL PDSO-24
[Infineon Technologies](#)

RFQ



TLE7234EXUMA1

IC DRIVER SPI 8CH HS/LS 24-SSOP
[Infineon Technologies](#)

RFQ



TLE7235E

IC DRIVER SPI 8CH HS/LS 24-SSOP
[Infineon Technologies](#)

RFQ



TLE7233G

[Infineon](#)

RFQ



TLE7233GXUMA1

IC DRIVER SPI 4CH LS 24-SSOP
[Infineon Technologies](#)

RFQ



TLE7233EMXUMA1

IC DRIVER SPI 4CH LS 24-SSOP
[Infineon Technologies](#)

RFQ



TLE7234E

[Infineon](#)

RFQ



TLE7234SE

[INFINEON](#)

RFQ



TLE7234SEXUMA1

IC DRIVER SPI RELAY CTRL DSO20
[Infineon Technologies](#)

RFQ

Guess You May Looking For



M55342K06B523ART5

RES SMD 523 OHM 0.1% 0.15W 0705
[Vishay Dale](#)

RFQ



M55342K06B556ART5

RES SMD 556 OHM 0.1% 0.15W 0705
[Vishay Dale](#)

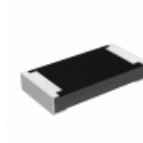
RFQ



Y14870R00250D9R

RES SMD 0.0025 OHM 0.5% 1W 2512
[Vishay Foil Resistors \(Division of Vishay Precisio](#)

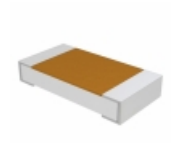
RFQ



RCP1206B91R0GS6

RES SMD 91 OHM 2% 11W 1206
[Vishay Dale](#)

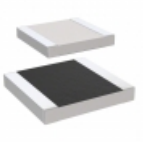
RFQ



D55342E07B442ERWS

RES SMD 442K OHM 1% 1/4W 1206
[Vishay Dale](#)

RFQ



M55342E10B634ARWS

RES SMD 634 OHM 0.1% 1/2W 1010
[Vishay Dale](#)

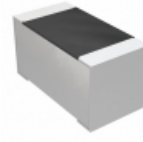
RFQ



M55342E12B3B32MWS

RES SMD 3.32KOHM 0.1% 1/10W 0603
[Vishay Dale](#)

RFQ



M55342E12B2B61RWS

RES SMD 2.61KOHM 0.1% 1/10W 0603
[Vishay Dale](#)

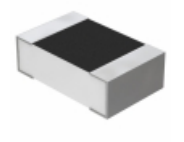
RFQ



M55342K02B159ARWS

RES SMD 159 OHM 0.1% 1/8W 0505
[Vishay Dale](#)

RFQ



Y16241K06000B9W

RES SMD 1.06K OHM 0.1% 1/5W 0805
[Vishay Foil Resistors \(Division of Vishay Precisio](#)

RFQ

