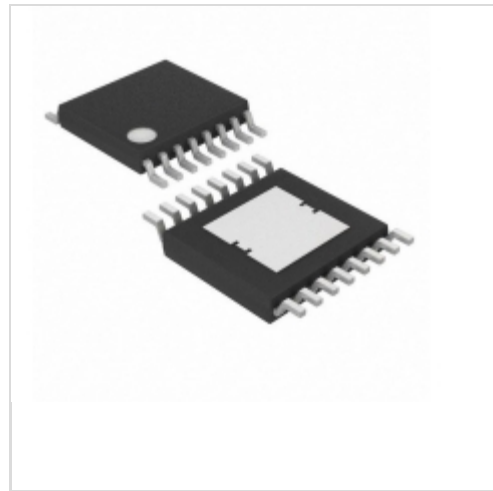


**MAX14871EUE+T**

**Maxim Integrated**

IC MOTOR DVR DC FULL BR 16TSSOP

Lead free / RoHS Compliant

Integrated Circuits (ICs)

1.MAX14871EUE+T.pdf

2.MAX14871EUE+T.pdf

We can supply MAX14871EUE+T, use the request quote form to request MAX14871EUE+T price and lead time. Zeano is a professional electronic components distributor. With 3+ Million line items of available electronic components can ship in short lead-time, over 250 thousand part numbers of electronic components in stock for immediately delivery, which may include part number MAX14871EUE+T. The price and lead time for MAX14871EUE+T depending on the quantity required and warehouse location. Contact us and our sales representative will provide you price. We look forward to work with you.

**Out Stock**
**0 pcs**

Minimum: 1

Multiples: 100

Manufacturer lead time 10 weeks

## Shopping Process

**1**
**Confirm the product**
**2**
**submit the order**
**3**
**payment**
**4**
**wait for delivery**
**5**
**receive the goods**

## Specifications

<b>Voltage - Supply:</b>	4.5 V ~ 36 V
<b>Voltage - Load:</b>	4.5 V ~ 36 V
<b>Technology:</b>	Bi-CMOS
<b>Supplier Device Package:</b>	16-TSSOP-EP
<b>Step Resolution:</b>	-
<b>Series:</b>	-
<b>Packaging:</b>	Tape & Reel (TR)
<b>Package / Case:</b>	16-TSSOP (0.173", 4.40mm Width) Exposed Pad
<b>Output Configuration:</b>	Half Bridge (2)
<b>Operating Temperature:</b>	-40°C ~ 150°C (TJ)
<b>Mounting Type:</b>	Surface Mount
<b>Motor Type - Stepper:</b>	-
<b>Motor Type - AC, DC:</b>	Brushed DC
<b>Interface:</b>	PWM
<b>Function:</b>	Driver - Fully Integrated, Control and Power Stage
<b>Current - Output:</b>	3A
<b>Applications:</b>	General Purpose

## Related products


**MAX1487**

in stock

[MAXIM](#)

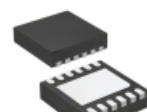
RFQ


**MAX1486EUB+T**

IC TXRX RS485/RS422 10-UMAX

[Maxim Integrated](#)

RFQ


**MAX14870ETC+T**

IC MOTOR DVR DC FULL BR 12TDFN

[Maxim Integrated](#)

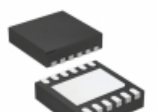
RFQ


**MAX1487C/D**

in stock

[MAXIM](#)

RFQ


**MAX14872ETC+T**

IC MOTOR DVR DC FULL BR 12TDFN

[Maxim Integrated](#)

RFQ


**MAX14871EVKIT#**

EVAL KIT FOR MAX14871

[Maxim Integrated](#)

RFQ


**MAX1486EUB+**

IC TXRX RS485/RS422 10-UMAX

[Maxim Integrated](#)

RFQ


**MAX14872EVKIT#**

EVAL KIT FOR MAX14872

[Maxim Integrated](#)

RFQ


**MAX1487C**

in stock

[MAXIM](#)

RFQ

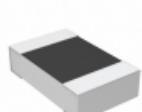

**MAX14870EVKIT#**

EVAL KIT FOR MAX14870

[Maxim Integrated](#)

RFQ

## Guess You May Looking For


**RP73D2A196KBTG**

RES SMD 196K OHM 0.1% 1/8W 0805

[TE Connectivity Passive Product](#)

RFQ


**RP73D1J2K21BTG**

RES SMD 2.21KOHM 0.1% 1/10W 0603

[TE Connectivity Passive Product](#)

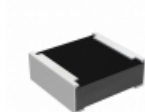
RFQ


**TNPW12105K62BEEN**

RES SMD 5.62K OHM 0.1% 1/3W 1210

[Vishay Dale](#)

RFQ


**RCP0505B18R0JEA**

RES SMD 18 OHM 5% 5W 0505

[Vishay Dale](#)

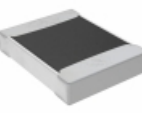
RFQ


**PWR1913WR100FE**

RES SMD 0.1 OHM 1% 1/2W 1913

[Bourns Inc.](#)

RFQ


**TNPW1210360KBEEN**

RES SMD 360K OHM 0.1% 1/3W 1210

[Vishay Dale](#)

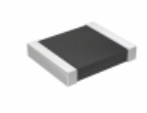
RFQ


**RG3216V-1781-D-T5**

RES SMD 1.78K OHM 0.5% 1/4W 1206

[Susumu](#)

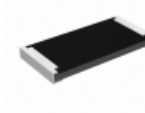
RFQ


**RT1210WRD0751K1L**

RES SMD 51.1KOHM 0.05% 1/4W 1210

[Yageo](#)

RFQ


**RCP2512B110RGEA**

RES SMD 110 OHM 2% 22W 2512

[Vishay Dale](#)

RFQ


**RG1608V-201-P-T1**

RES SMD 200 OHM 0.02% 1/10W 0603

[Susumu](#)

RFQ

