

**PLED6SW**



[Hamlin / Littelfuse](#)

LED PROTECTOR BI 6V DO214 2L

Lead free / RoHS Compliant

Circuit Protection

[PLED6SW.pdf](#)

**Buy Now**

We can supply PLED6SW, use the request quote form to request PLED6SW price and lead time. Zeano is a professional electronic components distributor. With 3+ Million line items of available electronic components can ship in short lead-time, over 250 thousand part numbers of electronic components in stock for immediately delivery, which may include part number PLED6SW. The price and lead time for PLED6SW depending on the quantity required and warehouse location. Contact us and our sales representative will provide you price. We look forward to work with you.

**Out Stock**

**0 pcs**

Minimum: 1

Multiples: 100

Manufacturer lead time 10 weeks

**PRICE**

2500 pcs	\$0.305
5000 pcs	\$0.284
12500 pcs	\$0.273
25000 pcs	\$0.263

Shopping Process

**1**

Confirm the product

**2**

submit the order

**3**

payment

**4**

wait for delivery

**5**

receive the goods

Specifications

<b>Voltage - Clamping:</b>	16V
<b>Voltage:</b>	6V
<b>Technology:</b>	LED Shunt
<b>Supplier Device Package:</b>	DO-214AA
<b>Series:</b>	PLED®
<b>Packaging:</b>	Tape & Reel (TR)
<b>Package / Case:</b>	DO-214AA, SMB
<b>Number of Circuits:</b>	1
<b>Mounting Type:</b>	Surface Mount
<b>Applications:</b>	LED Protection

Related products



**PLED6M**

LED PROTECTOR 6V BI-DIR PM-1

[Littelfuse Inc.](#)

RFQ



**PLED75W-012-C6250**

LED DRIVER CC AC/DC 4-12V 6.25A

[Thomas Research Products](#)

RFQ



**PLED6US**

LED PROTECTOR UNI 6V DO214 2L

[Littelfuse Inc.](#)

RFQ



**PLED6UQ12**

LED PROTECTOR UNI 6V QFN 3X3 2L

[Littelfuse Inc.](#)

RFQ



**PLED6S**

LED PROTECTOR 6V BI-DIR DO-214

[Littelfuse Inc.](#)

RFQ



**PLED75W-012**

LED DRIVER CV AC/DC 12V 6.25A

[Thomas Research Products](#)

RFQ



**PLED60W-054-C1050-D**

LED DRIVER CC AC/DC 18-54V 1.05A

[Thomas Research Products](#)

RFQ



**PLED610**

PROG ADAPTER FOR EP600/610

[Altera](#)

RFQ



**PLED75W-012-C6250-D**

LED DRIVER CC AC/DC 4-12V 6.25A

[Thomas Research Products](#)

RFQ



**PLED6Q12**

LED PROTECTOR 6V BI-DIR QFN 3X3

[Littelfuse Inc.](#)

RFQ

Guess You May Looking For



**SMAJ20A-TP**

TVS DIODE 20VWM 32.4VC SMA

[Micro Commercial Co](#)

RFQ

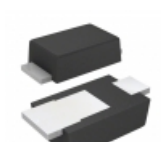


**SMBJ120A-TP**

TVS DIODE 120VWM 193VC SMB

[Micro Commercial Co](#)

RFQ



**DFLT16A-7**

TVS DIODE 16VWM 26VC POWERDI123

[Diodes Incorporated](#)

RFQ



**SMCJ110CA**

TVS DIODE 110VWM 177VC SMC

[Fairchild/ON Semiconductor](#)

RFQ



**SMBJ130A-TP**

TVS DIODE 130VWM 209VC SMB

[Micro Commercial Co](#)

RFQ



**P6KE480A**

TVS DIODE 408VWM 658VC DO204AC

[Littelfuse Inc.](#)

RFQ



**SMCJ7.0A**

TVS DIODE 7VWM 12VC SMC

[Littelfuse Inc.](#)

RFQ



**SMBJ15CA-E3/52**

TVS DIODE 15VWM 24.4VC SMB

[Vishay Semiconductor Diodes Division](#)

RFQ



**SMCJ13CA**

TVS DIODE 13VWM 21.5VC SMC

[Littelfuse Inc.](#)

RFQ



**824521601**

TVS DIODE 60VWM 96.8VC DO214AA

[Würth Electronics Inc.](#)

RFQ