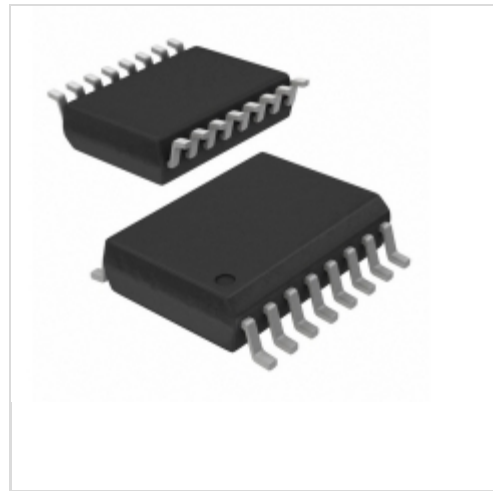


DS1640S

Maxim Integrated

IC PC POWER FET 16-SOIC
 Contains lead / RoHS non-compliant
 Integrated Circuits (ICs)

[DS1640S.pdf](#)

Buy Now

part#DS1640S is available, see description of DS1640S as below .
 use the request quote form to request DS1640S price and lead time.
 Buy Electronic Components at zeanoit.com .we are an independent distributor of electronic components with extensive inventory in stock.
 The price and lead time for DS1640S depending on the quantity required, availability and warehouse location.Contact us today and our sales team will send you quotation soon.
 Email: sales@zeanoit.com

Shopping Process
1
Confirm the product
2
submit the order
3
payment
4
wait for delivery
5
receive the goods
Specifications

Voltage - Supply (Vcc/Vdd):	4.5 V ~ 5.5 V
Voltage - Load:	3 V ~ 5.5 V
Switch Type:	Latched Driver
Supplier Device Package:	16-SOIC
Series:	-
Rds On (Typ):	67 mOhm
Ratio - Input:Output:	1:1
Packaging:	Tube
Package / Case:	16-SOIC (0.295", 7.50mm Width)
Output Type:	P-Channel
Output Configuration:	High Side
Operating Temperature:	0°C ~ 70°C (TA)
Number of Outputs:	4
Interface:	On/Off
Input Type:	Non-Inverting
Features:	-
Fault Protection:	-
Current - Output (Max):	300mA

Related products


DS1640SN
 IC PC POWER FET IND 16-SOIC
[Maxim Integrated](#)

RFQ



DS1633J-8
[NS](#)

RFQ



DS1633
[DALLAS](#)

RFQ



DS1640S/T&R
 IC PC POWER FET 16-SOIC
[Maxim Integrated](#)

RFQ



DS1642
 Nonvolatile Timekeeping RAM
[DALLAS](#)

RFQ



DS1640
 IC POWER FET PC 16-DIP
[Maxim Integrated](#)

RFQ



DS1632S+T&R
 IC POWER FAIL W/RESET 16SOIC
[Maxim Integrated](#)

RFQ



DS1640S+TR
 in stock
[MAXIM](#)

RFQ



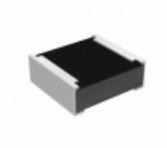
DS1640SN+TR
 in stock
[MAXIM](#)

RFQ



DS1640C
 Personal Computer Power FET
[DALLAS](#)

RFQ

Guess You May Looking For


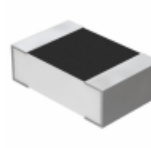
RCP0505B56R0GEC
 RES SMD 56 OHM 2% 5W 0505
[Vishay Dale](#)

RFQ



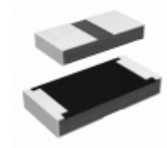
Y14870R00500D0R
 RES SMD 0.005 OHM 0.5% 1W 2512
[Vishay Foil Resistors \(Division of Vishay Precisio](#)

RFQ



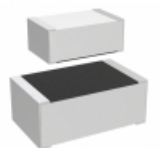
Y16291K00000C9W
 RES SMD 1K OHM 0.25% 1/10W 0805
[Vishay Foil Resistors \(Division of Vishay Precisio](#)

RFQ



RCP1206W330RGWB
 RES SMD 330 OHM 2% 11W 1206
[Vishay Dale](#)

RFQ



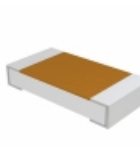
M55342E06B49D9RWS
 RES SMD 49.9 OHM 1% 0.15W 0705
[Vishay Dale](#)

RFQ



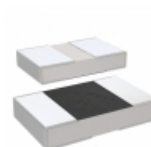
M55342K06B649AMWS
 RES SMD 649 OHM 0.1% 0.15W 0705
[Vishay Dale](#)

RFQ



D55342H07B33E2RT0
 RES SMD 33.2K OHM 1% 1/4W 1206
[Vishay Dale](#)

RFQ



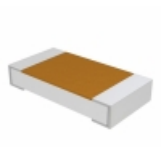
M55342K11B49D9RTSV
 RES SMD 49.9 OHM 1% 1/20W 0402
[Vishay Dale](#)

RFQ



Y14552K00000A0R
 RES SMD 2K OHM 0.05% 1/5W 1506
[Vishay Foil Resistors \(Division of Vishay Precisio](#)

RFQ



D55342E07B3B57MTP
 RES SMD 3.57K OHM 0.1% 1/4W 1206
[Vishay Dale](#)

RFQ