

## K2000S1URP



Hamlin / Littelfuse

SIDAC 190-210V 1A UNI DO-214AC

Lead free / RoHS Compliant

Discrete Semiconductor Products

[K2000S1URP.pdf](#)

**Buy Now**

Images are for reference only.

See Product Specifications for product details.

If you are interested to buy K2000S1URP, Just Email us.

Sales@zeanoit.com

our sales team will reply you within 24 hours

**Out Stock**

0 pcs

Minimum: 1

Multiples: 100

Manufacturer lead time 10 weeks

**PRICE**

5000 pcs	\$0.372
10000 pcs	\$0.358
25000 pcs	\$0.347

### Shopping Process

**1**

Confirm the product

**2**

submit the order

**3**

payment

**4**

wait for delivery

**5**

receive the goods

### Specifications

<b>Voltage - Breakover:</b>	190 ~ 210V
<b>Supplier Device Package:</b>	DO-214AC (SMA)
<b>Series:</b>	-
<b>Packaging:</b>	Tape & Reel (TR)
<b>Package / Case:</b>	DO-214AC, SMA
<b>Operating Temperature:</b>	-40°C ~ 125°C (TJ)
<b>Current - Peak Output:</b>	1A
<b>Current - Hold (Ih) (Max):</b>	80mA
<b>Current - Breakover:</b>	10µA

### Related products



**K2000S**

SIDAC 190-215V 1A DO214

[Littelfuse Inc.](#)

RFQ



**K2002G**

SIDAC 190-215V 1A DO15

[Littelfuse Inc.](#)

RFQ



**K2000SHURP**

SIDAC 200V DO214 2L

[Littelfuse Inc.](#)

RFQ



**K2000SHRP**

SIDAC 190-215V 1A DO214

[Littelfuse Inc.](#)

RFQ



**K2000GHU**

SIDAC 190-215V 1A DO15

[Littelfuse Inc.](#)

RFQ



**K2000GURP**

SIDAC 190-210V 1A UNI DO-15

[Littelfuse Inc.](#)

RFQ



**K2000GRP**

SIDAC 190-215V 1A DO15

[Littelfuse Inc.](#)

RFQ



**K2000SRP**

SIDAC 190-215V 1A DO214

[Littelfuse Inc.](#)

RFQ



**K2002-01MR**

VB

RFQ



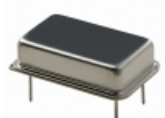
**K2000GHURP**

SIDAC 190-215V 1A DO15

[Littelfuse Inc.](#)

RFQ

### Guess You May Looking For

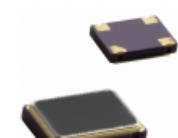


**CPPC1-HT7PP**

OSC PROG CMOS 5V STBY 50PPM TH

[Cardinal Components Inc.](#)

RFQ

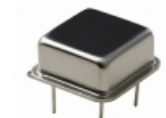


**CPPT7-LT5RP**

OSC PROG TTL 3.3V STBY 25PPM SMD

[Cardinal Components Inc.](#)

RFQ



**CPPT4-LT7PT**

OSC PROG TTL 3.3V TRI ST 50PPM

[Cardinal Components Inc.](#)

RFQ

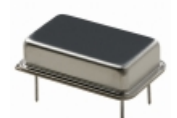


**503EAA-ADAF**

OSC PROG LVCMOS 1.7V-3.6V EN/DS

[Silicon Labs](#)

RFQ

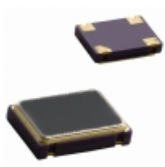


**CPPLX1-A7BRNP**

OSC BLANK FULL SIZE 100 OR 50PPM

[Cardinal Components Inc.](#)

RFQ

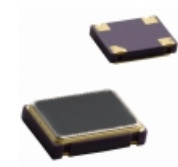


**CPPLT7-HZ5PT**

OSC PROG TTL 5V TRI ST 50PPM SMD

[Cardinal Components Inc.](#)

RFQ

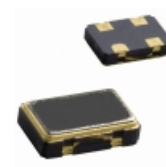


**CPPT7-LT0RT**

OSC PROG TTL 3.3V TRI ST 25PPM

[Cardinal Components Inc.](#)

RFQ



**CPPLT5-HT0PT**

OSC PROG TTL 5V TRI ST 50PPM SMD

[Cardinal Components Inc.](#)

RFQ

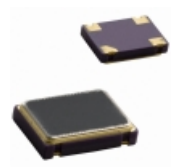


**590KD-ADG**

OSC PROG CML 1.8V EN/DS 7PPM SMD

[Silicon Labs](#)

RFQ



**CPPLC7-LT0PT**

OSC PROG CMOS 3.3V TRI ST 50PPM

[Cardinal Components Inc.](#)

RFQ