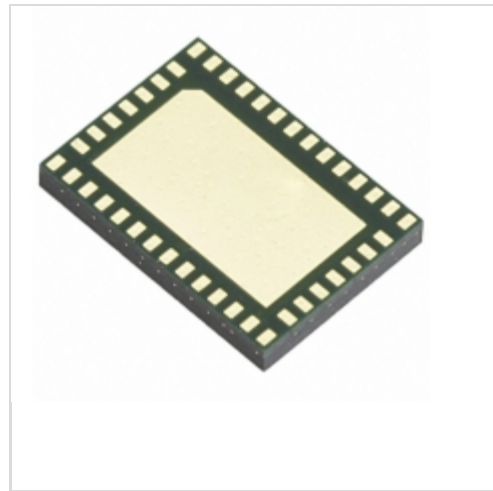


SI1000-E-GM2R



Energy Micro (Silicon Labs)

IC RF TXRX+MCU ISM<1GHZ 42-VFLGA

Lead free / RoHS Compliant

RF/IF and RFID

[SI1000-E-GM2R.pdf](#)

Buy Now

We can supply Energy Micro (Silicon Labs) SI1000-E-GM2R, use the request quote form to request SI1000-E-GM2R price, Energy Micro (Silicon Labs) Datasheet PDF and lead time. Zeanoit.com is a professional electronic components distributor. With 3+ Million line items of available electronic components can ship in short lead-time, over 250 thousand part numbers of electronic components in stock for immediately delivery, which may include part number SI1000-E-GM2R. The price and lead time for SI1000-E-GM2R depending on the quantity required, availability and warehouse location.

Out Stock

0 pcs

Minimum:1

Multiples:100

Manufacturer lead time 10 weeks

Shopping Process

1

Confirm the product

2

submit the order

3

payment

4

wait for delivery

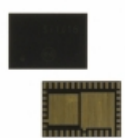
5

receive the goods

Specifications

Voltage - Supply:	1.8 V ~ 3.6 V
Type:	TxRx + MCU
Series:	-
Serial Interfaces:	I ² C, SPI, UART
Sensitivity:	-121dBm
RF Family/Standard:	General ISM < 1GHz
Protocol:	EZRadioPro
Power - Output:	20dBm
Packaging:	Tape & Reel (TR)
Package / Case:	42-VFLGA Exposed Pad
Operating Temperature:	-40°C ~ 85°C
Modulation:	FSK, GFSK, OOK
Memory Size:	64kB Flash, 4.35kB RAM
GPIO:	22
Frequency:	240MHz ~ 960MHz
Data Rate (Max):	256kbps
Current - Transmitting:	85mA
Current - Receiving:	18.5mA

Related products



SI1002-C-GM

IC RF TXRX+MCU ISM<1GHZ 42-WFQFN

[Silicon Labs](#)

RFQ

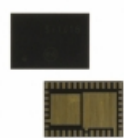


SI1000-ESA2-GM

IC RF TXRX+MCU ISM<1GHZ 42-WFQFN

[Silicon Labs](#)

RFQ



SI1001-C-GM

IC RF TXRX+MCU ISM<1GHZ 42-WFQFN

[Silicon Labs](#)

RFQ

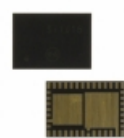


SI1000-CSA2-GM

IC RF TXRX+MCU ISM<1GHZ 42-WFQFN

[Silicon Labs](#)

RFQ

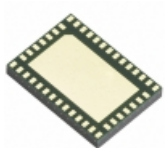


SI1000-E-GM2

IC RF TXRX+MCU ISM<1GHZ 42-VFLGA

[Silicon Labs](#)

RFQ

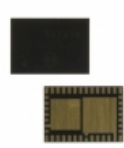


SI1001-E-GM2R

IC RF TXRX+MCU ISM<1GHZ 42-VFLGA

[Silicon Labs](#)

RFQ



SI1001-E-GM2

IC RF TXRX+MCU ISM<1GHZ 42-VFLGA

[Silicon Labs](#)

RFQ

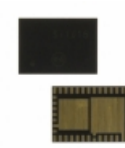


SI1000DK

DEVELOPMENT KIT SI101X

[Silicon Labs](#)

RFQ



SI1000-C-GM

IC RF TXRX+MCU ISM<1GHZ 42-WFQFN

[Silicon Labs](#)

RFQ



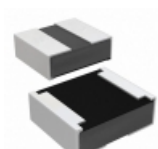
SI1000-ESA2-GMR

IC RF TXRX+MCU ISM<1GHZ 42-WFQFN

[Silicon Labs](#)

RFQ

Guess You May Looking For

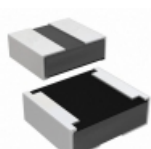


RCP0505W33R0GED

RES SMD 33 OHM 2% 5W 0505

[Vishay Dale](#)

RFQ

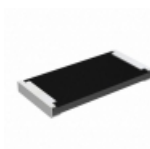


RCP0505W36R0JWB

RES SMD 36 OHM 5% 5W 0505

[Vishay Dale](#)

RFQ



RCP2512B10R0JS6

RES SMD 10 OHM 5% 22W 2512

[Vishay Dale](#)

RFQ



RCP2512B11R0JED

RES SMD 11 OHM 5% 22W 2512

[Vishay Dale](#)

RFQ

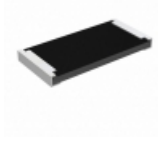


Y14880R00800B9W

RES SMD 0.008 OHM 0.1% 3W 3637

[Vishay Foil Resistors \(Division of Vishay Precisio\)](#)

RFQ

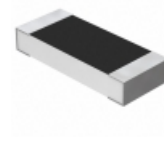


RCP2512B1K10GWB

RES SMD 1.1K OHM 2% 22W 2512

[Vishay Dale](#)

RFQ

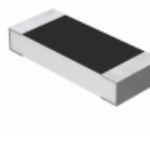


Y1631120R000Q9W

RES SMD 120 OHM 0.02% 0.3W 1506

[Vishay Foil Resistors \(Division of Vishay Precisio\)](#)

RFQ

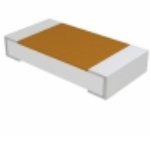


Y16311K00000Q9W

RES SMD 1K OHM 0.02% 0.3W 1506

[Vishay Foil Resistors \(Division of Vishay Precisio\)](#)

RFQ

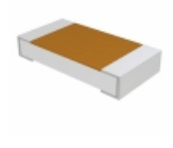


D55342E07B8B98MWS

RES SMD 8.98K OHM 0.1% 1/4W 1206

[Vishay Dale](#)

RFQ



D55342E07B1B14RWS

RES SMD 1.14K OHM 0.1% 1/4W 1206

[Vishay Dale](#)

RFQ

