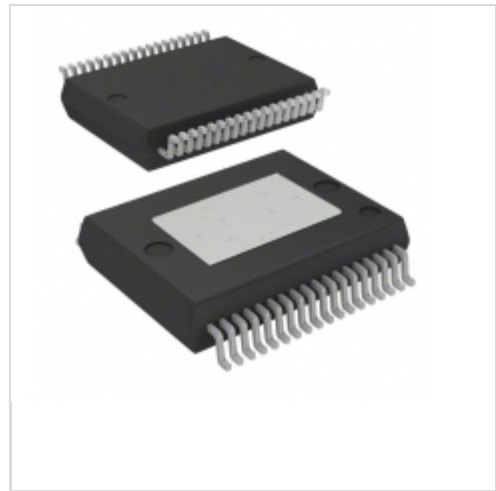


**L9951**



**STMicroelectronics**  
IC REAR DOOR ACT DVR POWERSO-36  
Lead free / RoHS Compliant  
Integrated Circuits (ICs)

[L9951.pdf](#)

**Buy Now**

**Out Stock**

**0 pcs**

Minimum:1

Multiples:100

Manufacturer lead time 10 weeks

Images are for reference only.

See Product Specifications for product details.

If you are interested to buy L9951,Just Email us.

Sales@zeanoit.com

our sales team will reply you within 24 hours

Shopping Process

**1**

Confirm the product

**2**

submit the order

**3**

payment

**4**

wait for delivery

**5**

receive the goods

Specifications

<b>Voltage - Supply:</b>	7 V ~ 28 V
<b>Supplier Device Package:</b>	PowerSO-36
<b>Series:</b>	-
<b>Packaging:</b>	Tube
<b>Package / Case:</b>	PowerSO-36 Exposed Bottom Pad
<b>Operating Temperature:</b>	-40°C ~ 150°C
<b>Mounting Type:</b>	Surface Mount
<b>Current - Supply:</b>	7mA
<b>Applications:</b>	Automotive

Related products



**L9950XPTR**  
IC DOOR ACTUATOR DVR POWERSO-36  
[STMicroelectronics](#)

RFQ



**L9951XP**  
IC REAR DOOR ACT DVR POWERSO-36  
[STMicroelectronics](#)

RFQ



**L9950XP@@@**  
[ST](#)

RFQ



**L99522XP**  
in stock  
[ST](#)

RFQ



**L9950XP**  
IC DOOR ACTUATOR DVR POWERSO-36  
[STMicroelectronics](#)

RFQ



**L9951TR**  
IC DVR DOOR ACTUATOR POWERSO-36  
[STMicroelectronics](#)

RFQ



**L9951XPTR**  
IC DVR DOOR ACTUATOR POWERSO-36  
[STMicroelectronics](#)

RFQ



**L9950MTR-S-RLF**  
[ST](#)

RFQ



**L9951MTR**  
[ST](#)

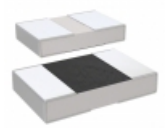
RFQ



**L9950TR**  
IC DRIVER DOOR ACTUATOR PWRSSO-36  
[STMicroelectronics](#)

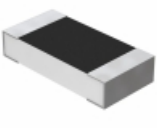
RFQ

Guess You May Looking For



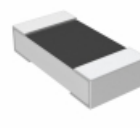
**M55342E11B20B0RWI**  
RES SMD 20K OHM 0.1% 1/20W 0402  
[Vishay Dale](#)

RFQ



**Y162513K9920Q0W**  
RES SMD 13.992K OHM 0.3W 1206  
[Vishay Foil Resistors \(Division of Vishay Precisio](#)

RFQ



**PLT0603Z5900LBTS**  
RES SMD 590 OHM 0.01% 0.15W 0603  
[Vishay Thin Film](#)

RFQ



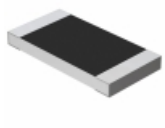
**Y1745898R000Q0R**  
RES SMD 898OHM 0.02% 1/4W J LEAD  
[Vishay Foil Resistors \(Division of Vishay Precisio](#)

RFQ



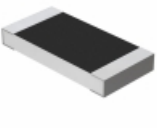
**Y1745120R000T9L**  
RES SMD 120OHM 0.01% 1/4W J LEAD  
[Vishay Foil Resistors \(Division of Vishay Precisio](#)

RFQ



**Y1628872R000B9R**  
RES SMD 872 OHM 0.1% 3/4W 2512  
[Vishay Foil Resistors \(Division of Vishay Precisio](#)

RFQ



**Y162720K0000A13W**  
RES SMD 20K OHM 0.05% 1/2W 2010  
[Vishay Foil Resistors \(Division of Vishay Precisio](#)

RFQ



**9C12063A12R7FKHFT**  
RES SMD 12.7 OHM 1% 1/4W 1206  
[Yageo](#)

RFQ



**9C12063A1582FKHFT**  
RES SMD 15.8K OHM 1% 1/4W 1206  
[Yageo](#)

RFQ



**9T12062A2002CAHFT**  
RES SMD 20K OHM 0.25% 1/8W 1206  
[Yageo](#)

RFQ