

BTS716GT

International Rectifier (Infineon Technologies)

SWITCH 4-CHAN HIGH SIDE P-DSO20

Lead free / RoHS Compliant

Integrated Circuits (ICs)

[BTS716GT.pdf](#)

Images are for reference only.

See Product Specifications for product details.

If you are interested to buy BTS716GT, Just Email us.

Sales@zeanoit.com

our sales team will reply you within 24 hours

Shopping Process

1

Confirm the product

2

submit the order

3

payment

4

wait for delivery

5

receive the goods

Specifications

Voltage - Supply (Vcc/Vdd):	Not Required
Voltage - Load:	5.5 V ~ 40 V
Switch Type:	General Purpose
Supplier Device Package:	P-DSO-20
Series:	-
Rds On (Typ):	110 mOhm
Ratio - Input:Output:	1:1
Packaging:	Tape & Reel (TR)
Package / Case:	20-SOIC (0.295", 7.50mm Width)
Output Type:	N-Channel
Output Configuration:	High Side
Operating Temperature:	-40°C ~ 150°C (TJ)
Number of Outputs:	4
Interface:	On/Off
Input Type:	Non-Inverting
Features:	Status Flag
Fault Protection:	Current Limiting (Fixed), Open Load Detect, Over Temperature, Over Voltage
Current - Output (Max):	2.3A

Related products


BTS721L1

 IC SWITCH HI-SIDE 4-CH DSO-20
[Infineon Technologies](#)

RFQ


BTS720L1
[INFINEON](#)

RFQ


BTS710L1
[SIEMENS](#)

RFQ


BTS716GB

 IC HISIDE PWR SWITCH 4CH PDSO-20
[Infineon Technologies](#)

RFQ


BTS711L1

 SWITCH 4CHAN HIGH SIDE P-DSO20-9
[Infineon Technologies](#)

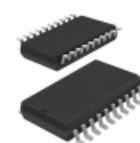
RFQ


BTS721LI
[INFINEON](#)

RFQ


BTS723G
[INFINEON](#)

RFQ


BTS716G

 SWITCH 4-CHAN HIGH SIDE P-DSO20
[Infineon Technologies](#)

RFQ


BTS712N1

 IC HISIDE PWR SWITCH 4CH PDSO-20
[Infineon Technologies](#)

RFQ


BTS721L1T

 IC SWITCH HI-SIDE 4-CH DSO-20
[Infineon Technologies](#)

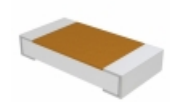
RFQ

Guess You May Looking For


WSLP59312L000JEK

 RES SMD 0.002 OHM 5% 8W 5931
[Vishay Dale](#)

RFQ


D55342E07B158BRT5

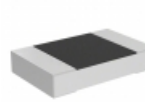
 RES SMD 158K OHM 0.1% 1/4W 1206
[Vishay Dale](#)

RFQ


Y14880R00200F9W

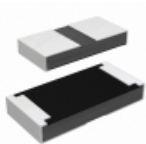
 RES SMD 0.002 OHM 1% 3W 3637
[Vishay Foil Resistors \(Division of Vishay Preciso](#)

RFQ


PLTT0805Z8351AGT5

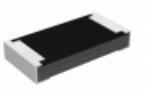
 RES SMD 8.35KOHM 0.05% 1/4W 0805
[Vishay Thin Film](#)

RFQ


RCP1206W680RJWB

 RES SMD 680 OHM 5% 11W 1206
[Vishay Dale](#)

RFQ


RCP1206B910RGWB

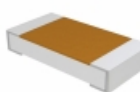
 RES SMD 910 OHM 2% 11W 1206
[Vishay Dale](#)

RFQ


M55342E06B264BRWS

 RES SMD 264K OHM 0.1% 0.15W 0705
[Vishay Dale](#)

RFQ


D55342H07B2E21RT0

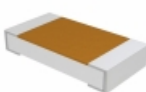
 RES SMD 2.21K OHM 1% 1/4W 1206
[Vishay Dale](#)

RFQ


Y149664R0000B9R

 RES SMD 64 OHM 0.1% 0.15W 1206
[Vishay Foil Resistors \(Division of Vishay Preciso](#)

RFQ


D55342E07B4B48RTP

 RES SMD 4.48K OHM 0.1% 1/4W 1206
[Vishay Dale](#)

RFQ