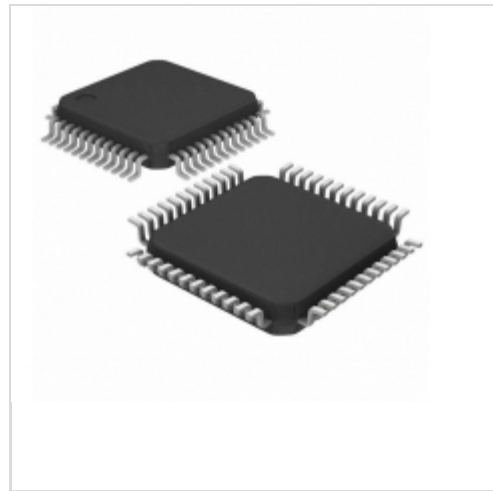


W681388DG TR



Nuvoton Technology Corporation America

IC PRO-X PROG CODEC/SLCC 48-LQFP
Lead free / RoHS Compliant
Integrated Circuits (ICs)

[W681388DG TR.pdf](#)

Buy Now

Images are for reference only.

See Product Specifications for product details.

If you are interested to buy W681388DG TR, Just Email us.

Sales@zeanoit.com

our sales team will reply you within 24 hours

Out Stock

0 pcs

Minimum:1

Multiples:100

Manufacturer lead time 10 weeks

Shopping Process

1

Confirm the product

2

submit the order

3

payment

4

wait for delivery

5

receive the goods

Specifications

Voltage - Supply, Digital:	-
Voltage - Supply, Analog:	-
Type:	PCM
Supplier Device Package:	48-LQFP
Sigma Delta:	Yes
Series:	-
S/N Ratio, ADCs / DACs (db) Typ:	-
Resolution (Bits):	16 b
Packaging:	Tape & Reel (TR)
Package / Case:	48-LQFP
Operating Temperature:	0°C ~ 70°C
Number of ADCs / DACs:	1 / 1
Mounting Type:	Surface Mount
Dynamic Range, ADCs / DACs (db) Typ:	-
Data Interface:	PCM Audio Interface

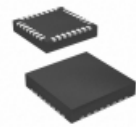
Related products

winbond

W681360W

in stock
[WINBOND](#)

RFQ



W681360YG

IC VOICEBAND CODEC 3V 32-QFN
[Nuvoton Technology Corporation of America](#)

RFQ



W681360WG TR

IC VOICEBND CODEC 3V 1CH 20TSSOP
[Nuvoton Technology Corporation of America](#)

RFQ

nuvoTon

W681511DK

KIT DEVELOPMENT FOR W681511
[Nuvoton Technology Corporation of America](#)

RFQ



W681360WG

IC VOICEBND CODEC 3V 1CH 20TSSOP
[Nuvoton Technology Corporation of America](#)

RFQ

nuvoTon

W681388EVB

KIT EVAL FOR W681388
[Nuvoton Technology Corporation of America](#)

RFQ



W681388DG

IC PRO-X PROG CODEC/SLCC 48-LQFP
[Nuvoton Technology Corporation of America](#)

RFQ

winbond

w681511

in stock
[WINBOND](#)

RFQ

nuvoTon

W681388YG

IC PRO-X PROG CODEC/SLCC 48-QFN
[Nuvoton Technology Corporation of America](#)

RFQ

nuvoTon

W681388YG TR

IC PRO-X PROG CODEC/SLCC 48-QFN
[Nuvoton Technology Corporation of America](#)

RFQ

Guess You May Looking For



27979

MODULE SRL LCD 4X20 BACKLIT
[Parallax Inc.](#)

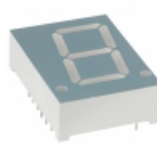
RFQ



LCR-U02002DSF-WH

LCD MODULE 20X2 CHAR TRNSFL STN
[Lumex Opto/Components Inc.](#)

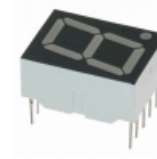
RFQ



LDS-C816RI

LED 7-SEG .80 SNGL S-RED CC DIR
[Lumex Opto/Components Inc.](#)

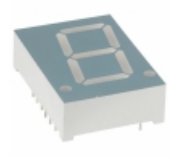
RFQ



HDSP-5503

LED 7-SEG 14.2MM CC HE RED RHD
[Broadcom Limited](#)

RFQ



LDS-A816RI

LED 7-SEG .80 SNGL S-RED CA DIR
[Lumex Opto/Components Inc.](#)

RFQ



VM800C50A-D

BOARD EVAL FT800 WITH 5.0 LCD
[FTDI, Future Technology Devices International Ltd](#)

RFQ



O100H016HLPP5N0000

100X16 YELLOW GRAPHIC OLED
[Vishay Dale](#)

RFQ



HDSP-B01G

DISPLAY 7SEG 4DIG GREEN CC 0.56"
[Broadcom Limited](#)

RFQ



ISD2011

DISPLAY 4CHAR .150" YELLOW
[OSRAM Opto Semiconductors Inc.](#)

RFQ



OS096036PK10MB2B10

DISPLAY OLED 96X36 4BIT 1.0 BLU
[OSRAM Opto Semiconductors Inc.](#)

RFQ