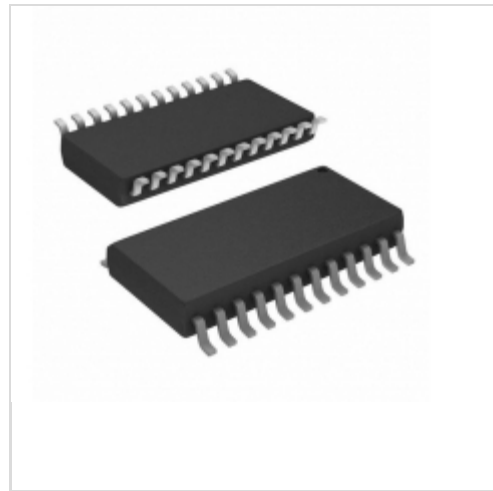



AT28BV16-30SI



Microchip Technology

IC EEPROM 16KBIT 300NS 24SOIC
Contains lead / RoHS non-compliant
Integrated Circuits (ICs)

 [AT28BV16-30SI.pdf](#)

 **Buy Now**

part#AT28BV16-30SI is available, see description of AT28BV16-30SI as below .
use the request quote form to request AT28BV16-30SI price and lead time.
Buy Electronic Components at zeanoit.com .we are an independent distributor of electronic components with extensive inventory in stock.
The price and lead time for AT28BV16-30SI depending on the quantity required, availability and warehouse location.Contact us today and our sales team will send you quotation soon.
Email: sales@zeanoit.com

Shopping Process

1

Confirm the product

2

submit the order

3

payment

4

wait for delivery

5

receive the goods

Specifications

Voltage - Supply:	2.7 V ~ 3.6 V
Supplier Device Package:	24-SOIC
Speed:	300ns
Series:	-
Packaging:	Tube
Package / Case:	24-SOIC (0.295", 7.50mm Width)
Operating Temperature:	-40°C ~ 85°C (TC)
Memory Type:	Non-Volatile
Memory Size:	16Kb (2K x 8)
Memory Format:	EEPROM
Interface:	Parallel

Related products



AT28BV16-30SC

in stock
[ATMEL](#)

RFQ



AT28BV16-30SC

IC EEPROM 16KBIT 300NS 24SOIC
[Microchip Technology](#)

RFQ



AT28BV16-30PI

IC EEPROM 16KBIT 300NS 24DIP
[Microchip Technology](#)

RFQ



AT28BV16-30TI

in stock
[ATMEL](#)

RFQ



AT28BV16-30TI

IC EEPROM 16KBIT 300NS 28TSOP
[Microchip Technology](#)

RFQ



AT28BV16-30TC

in stock
[ATMEL](#)

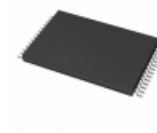
RFQ



AT28BV256

in stock
[ATMEL](#)

RFQ



AT28BV16-30TC

IC EEPROM 16KBIT 300NS 28TSOP
[Microchip Technology](#)

RFQ



AT28BV16-30PI

in stock
[ATMEL](#)

RFQ

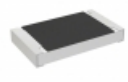


AT28BV16-30SI

in stock
[ATMEL](#)

RFQ

Guess You May Looking For



RCS08054M70JNEA

RES SMD 4.7M OHM 5% 0.4W 0805
[Vishay Dale](#)

RFQ



RT0805BRD0721K5L

RES SMD 21.5K OHM 0.1% 1/8W 0805
[Yageo](#)

RFQ



RMCS0805FT121K

RES SMD 121K OHM 1% 1/8W 0805
[Stackpole Electronics Inc.](#)

RFQ



AA0805FR-0762RL

RES SMD 62 OHM 1% 1/8W 0805
[Yageo](#)

RFQ



RNCF0805DKE9R10

RES SMD 9.1 OHM 0.5% 1/8W 0805
[Stackpole Electronics Inc.](#)

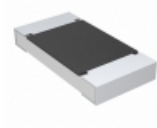
RFQ



CRCW080533K2DHEAP

RES SMD 33.2K OHM 0.5% 1/8W 0805
[Vishay Dale](#)

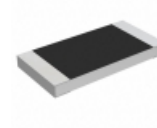
RFQ



CRCW20101K65FKEF

RES SMD 1.65K OHM 1% 3/4W 2010
[Vishay Dale](#)

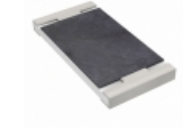
RFQ



352024RJT

RES SMD 24 OHM 5% 1W 2512
[TE Connectivity Passive Product](#)

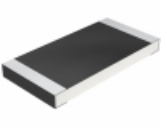
RFQ



RC2512FK-079K76L

RES SMD 9.76K OHM 1% 1W 2512
[Yageo](#)

RFQ



CRCW25125R49FKEG

RES SMD 5.49 OHM 1% 1W 2512
[Vishay Dale](#)

RFQ