

**FS-365**



**Digi International**  
MODULE A9M2410 32MB SDRAM FLASH  
Lead free / RoHS Compliant  
Integrated Circuits (ICs)

**Buy Now**

We can supply FS-365, use the request quote form to request FS-365 price and lead time. Zeano is a professional electronic components distributor. With 3+ Million line items of available electronic components can ship in short lead-time, over 250 thousand part numbers of electronic components in stock for immediately delivery, which may include part number FS-365. The price and lead time for FS-365 depending on the quantity required and warehouse location. Contact us and our sales representative will provide you price. We look forward to work with you.

**Shopping Process**

**1**

**Confirm the product**

**2**

**submit the order**

**3**

**payment**

**4**

**wait for delivery**

**5**

**receive the goods**

**Specifications**

Series: -

**Related products**



**FS-373**  
MODULE UNC90 32MB SDRAM FLASH  
[Digi International](#)

RFQ



**FS-372**  
MODULE 32MB SDRAM 32MB FLASH  
[Digi International](#)

RFQ



**FS-364**  
MODULE 9P 16MB SDRAM 32MB FLASH  
[Digi International](#)

RFQ



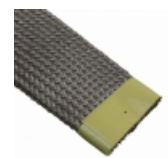
**FS-382**  
MODULE 9P 32MB SDRAM 32MB FLASH  
[Digi International](#)

RFQ



**FS-362**  
MODULE A9M2410 32MB SDRAM FLASH  
[Digi International](#)

RFQ



**FS-37**  
CABLE 37MM HI FLEX SHIELD 50M  
3M

RFQ



**FS-353**  
MODULE 7U 16MB SDRAM 8MB FLASH  
[Digi International](#)

RFQ



**FS-377**  
MODULE XP 64MB SDRAM 32MB FLASH  
[Digi International](#)

RFQ



**FS-352**  
MODULE 7U 16MB SDRAM 8MB FLASH  
[Digi International](#)

RFQ



**FS-355**  
MODULE 7U 16MB SDRAM 2MB FLASH  
[Digi International](#)

RFQ

**Guess You May Looking For**



**ISL58113CRZ-T13**  
IC LASER DVR 200MHZ 3.3V 24QFN  
[Intersil](#)

RFQ



**MAX5909UEE+T**  
IC HOT-SWAP CTRLR DUAL 16-QSOP  
[Maxim Integrated](#)

RFQ



**LTC4215CGN#TRPBF**  
IC CNTRLR HOT SWAP 16-SSOP  
[Linear Technology](#)

RFQ



**LTC4245CG#PBF**  
IC CNTRLR HOT SWAP 36-SSOP  
[Linear Technology](#)

RFQ



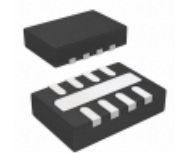
**LTC4244IGN#TRPBF**  
IC CTRLR HOTSWAP PCI 20-SSOP  
[Linear Technology](#)

RFQ



**NT20042-QSOP-TR**  
IC LASER LED DVR OC-3/FE 16QSOP  
[Semtech Corporation](#)

RFQ



**LT3591EDDB#TRMPBF**  
IC LED DRVR RGLTR DIM 500MA 8DFN  
[Linear Technology](#)

RFQ



**PCA9624PW,112**  
IC LED DRIVER LINEAR DIM 24TSSOP  
[NXP USA Inc.](#)

RFQ



**PCA9633DP2,118**  
IC LED DRVR PS DIM 25MA 10TSSOP  
[NXP USA Inc.](#)

RFQ



**AL1676-40DS7-13**  
IC LED DRIVER OFFLINE 4A SO-7  
[Diodes Incorporated](#)

RFQ