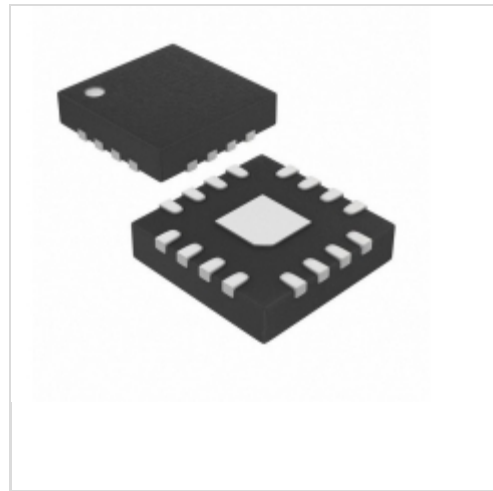


MAX4211FETE+



Maxim Integrated

IC CURRENT MONITOR 1.5% 16TQFN

Lead free / RoHS Compliant

Integrated Circuits (ICs)

1.MAX4211FETE+.pdf

2.MAX4211FETE+.pdf

Buy Now

In Stock

284 pcs

Minimum:1

Multiples:100

Manufacturer lead time 10 weeks

PRICE

1 pcs	\$2.04
10 pcs	\$1.94
50 pcs	\$1.93

part#MAX4211FETE+ is available, see description of MAX4211FETE+ as below .

use the request quote form to request MAX4211FETE+ price and lead time.

Buy Electronic Components at zeanoit.com .we are an independent distributor of electronic components with extensive inventory in stock.

The price and lead time for MAX4211FETE+ depending on the quantity required, availability and warehouse location.Contact us today and our sales team will send you quotation soon.

Email: sales@zeanoit.com

Shopping Process

1

Confirm the product

2

submit the order

3

payment

4

wait for delivery

5

receive the goods

Specifications

Voltage - Input:	4 V ~ 28 V
Supplier Device Package:	16-TQFN (4x4)
Series:	-
Sensing Method:	High-Side
Packaging:	Tube
Package / Case:	16-WQFN Exposed Pad
Operating Temperature:	-40°C ~ 85°C
Mounting Type:	Surface Mount
Function:	Current Monitor
Current - Output:	-
Accuracy:	±0.5%

Related products



MAX4211EEUE+

IC CURRENT MONITOR 1.5% 16TSSOP

[Maxim Integrated](#)

RFQ

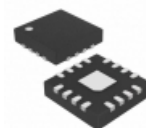


MAX4211FEUE+

IC MONITR PWR/CURR HSIDE 16TSSOP

[Maxim Integrated](#)

RFQ



MAX4211EETE-T

IC CURRENT MONITOR 1.5% 16TQFN

[Maxim Integrated](#)

RFQ



MAX4211EEUE+T

IC CURRENT MONITOR 1.5% 16TSSOP

[Maxim Integrated](#)

RFQ



MAX4211FEUE+T

IC MONITR PWR/CURR HSIDE 16TSSOP

[Maxim Integrated](#)

RFQ

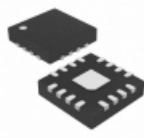


MAX4212

in stock

[MAXIM](#)

RFQ



MAX4211EETE+

IC CURRENT MONITOR 1.5% 16TQFN

[Maxim Integrated](#)

RFQ



MAX4211FEC3C+T

in stock

[MAXIM](#)

RFQ

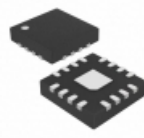


MAX4212EUK

in stock

[MAXIM](#)

RFQ



MAX4211FETE+T

IC CURRENT MONITOR 1.5% 16TQFN

[Maxim Integrated](#)

RFQ

Guess You May Looking For

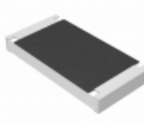


RT0805CRB07215KL

RES SMD 215K OHM 0.25% 1/8W 0805

[Yageo](#)

RFQ

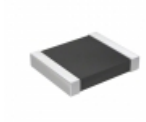


ERJ-S1DF8661U

RES SMD 8.66K OHM 1% 3/4W 2010

[Panasonic Electronic Components](#)

RFQ

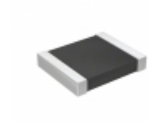


RT1210BRD07133RL

RES SMD 133 OHM 0.1% 1/4W 1210

[Yageo](#)

RFQ

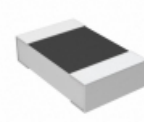


RT1210BRD0719R1L

RES SMD 19.1 OHM 0.1% 1/4W 1210

[Yageo](#)

RFQ

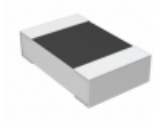


CPF0805B30R9E1

RES SMD 30.9 OHM 0.1% 1/10W 0805

[TE Connectivity Passive Product](#)

RFQ

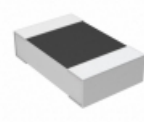


CPF0805B499RE1

RES SMD 499 OHM 0.1% 1/10W 0805

[TE Connectivity Passive Product](#)

RFQ

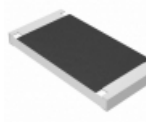


CPF0805B619KE1

RES SMD 619K OHM 0.1% 1/10W 0805

[TE Connectivity Passive Product](#)

RFQ



ERJ-S1TF1102U

RES SMD 11K OHM 1% 1W 2512

[Panasonic Electronic Components](#)

RFQ



AT1206CRD076K49L

RES SMD 6.49KOHM 0.25% 1/4W 1206

[Yageo](#)

RFQ



RG3216P-2610-B-T1

RES SMD 261 OHM 0.1% 1/4W 1206

[Susumu](#)

RFQ