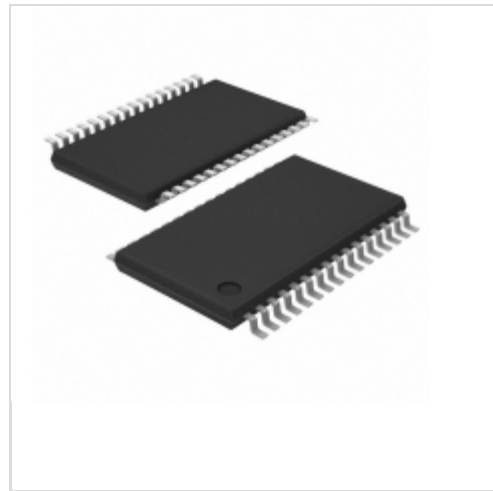


AN44066A-VF



Panasonic
IC MOTOR DRIVER PAR 32SSOP
Lead free / RoHS Compliant
Integrated Circuits (ICs)

- [1.AN44066A-VF.pdf](#)
- [2.AN44066A-VF.pdf](#)

Buy Now

Out Stock
0 pcs
Minimum:1
Multiples:100
Manufacturer lead time 10 weeks

PRICE	
2000 pcs	\$1.467
6000 pcs	\$1.412

Images are for reference only.
See Product Specifications for product details.
If you are interested to buy AN44066A-VF,Just Email us.
Sales@zeanoit.com
our sales team will reply you within 24 hours

Shopping Process

1

Confirm the product

2

submit the order

3

payment

4

wait for delivery

5

receive the goods

Specifications

Voltage - Supply:	10 V ~ 34 V
Voltage - Load:	10 V ~ 34 V
Technology:	Power MOSFET
Supplier Device Package:	32-SSOP
Step Resolution:	1, 1/2, 1/8, 1/16
Series:	-
Packaging:	Tape & Reel (TR)
Package / Case:	32-SSOP (0.240", 6.10mm Width)
Output Configuration:	Half Bridge (4)
Operating Temperature:	-20°C ~ 120°C (TJ)
Mounting Type:	Surface Mount
Motor Type - Stepper:	Bipolar
Motor Type - AC, DC:	-
Interface:	Parallel
Function:	Driver - Fully Integrated, Control and Power Stage
Current - Output:	800mA
Applications:	General Purpose

Related products



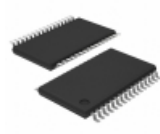
AN44065A-VF
IC MOTOR DRIVER PAR SMD
[Panasonic Electronic Components](#)

RFQ



AN44069A
in stock
[PAN](#)

RFQ



AN44063A-VF
IC MOTOR DRIVER PAR 32SSOP
[Panasonic Electronic Components](#)

RFQ

Panasonic

AN44070A-EVB-0
BOARD EVAL FOR AN44070A-VF
[Panasonic Electronic Components](#)

RFQ

Panasonic

AN44069A-VF
IC MOTOR DRIVER PAR 28SOP
[Panasonic Electronic Components](#)

RFQ



AN44062A-VF
[PANASON](#)

RFQ

Panasonic

AN44062A
[PANASONIC](#)

RFQ

Panasonic

AN44070A-VF
IC MOTOR DRIVER PAR 34HSOP
[Panasonic Electronic Components](#)

RFQ



AN44067A-VF
IC MOTOR DRIVER PAR 34HSOP
[Panasonic Electronic Components](#)

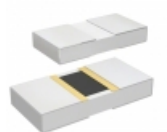
RFQ

Panasonic

AN44060A-VF
[PANASONIC](#)

RFQ

Guess You May Looking For



PHP00805H85R6BST1
RES SMD 85.6 OHM 0.1% 5/8W 0805
[Vishay Thin Film](#)

RFQ



WSLP08059L000JEK18
RES SMD 0.009 OHM 5% 1W 0805
[Vishay Dale](#)

RFQ



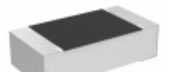
RG1005V-1620-D-T10
RES SMD 162 OHM 0.5% 1/16W 0402
[Susumu](#)

RFQ



SM6227FT2K32
RES SMD 2.32K OHM 1% 3W 6227
[Stackpole Electronics Inc.](#)

RFQ



TNP0603732RBZEN00
RES SMD 732 OHM 0.1% 1/10W 0603
[Vishay Dale](#)

RFQ



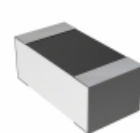
TNP060333K2BZEN00
RES SMD 33.2KOHM 0.1% 1/10W 0603
[Vishay Dale](#)

RFQ



RG1005V-361-B-T5
RES SMD 360 OHM 0.1% 1/16W 0402
[Susumu](#)

RFQ



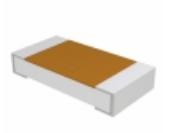
RN73C1J825RBTG
RES SMD 825 OHM 0.1% 1/16W 0603
[TE Connectivity Passive Product](#)

RFQ



RT1206WRC07180KL
RES SMD 180K OHM 0.05% 1/4W 1206
[Yageo](#)

RFQ



D55342E07B470KRT1
RES SMD 470K OHM 5% 1/4W 1206
[Vishay Dale](#)

RFQ

