

UCC3818ANG4



N/A

IC PFC CTRLR AVERAGE CURR 16DIP

Lead free / RoHS Compliant

Integrated Circuits (ICs)

Buy Now

Out Stock

0 pcs

Minimum:1

Multiples:1

Manufacturer lead time 10 weeks

- 1.Please confirm the Detail which include the part no.and the manufacturer of the products when ordering.
- 2.If you have bill of material(BOM) list require to quote.you could send to our email.
- 3.You can email us to change the order details before shipment.
- 4.Orders cannot be canceled after shipping the packages.

Shopping Process

1

Confirm the product



2

submit the order



3

payment



4

wait for delivery



5

receive the goods

Specifications

Voltage - Supply:	12 V ~ 17 V
Supplier Device Package:	16-PDIP
Series:	-
Packaging:	Tube
Package / Case:	16-DIP (0.300", 7.62mm)
Operating Temperature:	0°C ~ 70°C
Mounting Type:	Through Hole
Mode:	Average Current
Frequency - Switching:	6kHz ~ 220kHz
Current - Startup:	150µA

Related products



UCC3818AN

IC PFC CTRLR AVERAGE CURR 16DIP

N/A

RFQ



UCC3818ADR

IC PFC CTRLR AVERAGE CURR 16SOIC

N/A

RFQ



UCC3818ADRG4

IC PFC CTRLR AVERAGE CURR 16SOIC

N/A

RFQ



UCC3818DG4

IC PFC CTRLR AVERAGE CURR 16SOIC

N/A

RFQ



UCC3818APWR

IC PFC CTRL AVERAGE CURR 16TSSOP

N/A

RFQ



UCC3818D

IC PFC CTRLR AVERAGE CURR 16SOIC

N/A

RFQ



UCC3818ADG4

IC PFC CTRLR AVERAGE CURR 16SOIC

N/A

RFQ



UCC3818APW

IC PFC CTRL AVERAGE CURR 16TSSOP

N/A

RFQ



UCC3818APWRG4

IC PFC CTRL AVERAGE CURR 16TSSOP

N/A

RFQ



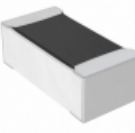
UCC3818AD

IC PFC CTRLR AVERAGE CURR 16SOIC

N/A

RFQ

Guess You May Looking For



RN73C1E2K32BTG

RES SMD 2.32KOHM 0.1% 1/16W 0402

TE Connectivity Passive Product

RFQ

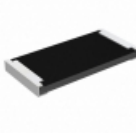


RG3216V-6651-B-T5

RES SMD 6.65K OHM 0.1% 1/4W 1206

Susumu

RFQ

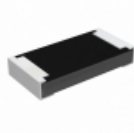


RCP2512B11R0JEB

RES SMD 11 OHM 5% 22W 2512

Vishay Dale

RFQ

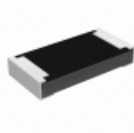


RCP1206B1K20JS2

RES SMD 1.2K OHM 5% 11W 1206

Vishay Dale

RFQ

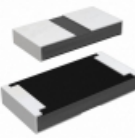


RCP1206B56R0JS2

RES SMD 56 OHM 5% 11W 1206

Vishay Dale

RFQ

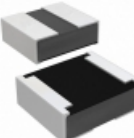


RCP1206W18R0JEC

RES SMD 18 OHM 5% 11W 1206

Vishay Dale

RFQ

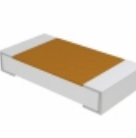


RCP0505W820RJEC

RES SMD 820 OHM 5% 5W 0505

Vishay Dale

RFQ

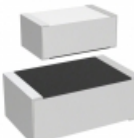


TNPU120617K4AZEN00

RES SMD 17.4KOHM 0.05% 1/4W 1206

Vishay Dale

RFQ

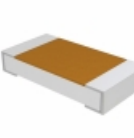


M55342E06B66E5PT5

RES SMD 66.5K OHM 1% 0.15W 0705

Vishay Dale

RFQ



D55342E07B249APT1

RES SMD 249 OHM 0.1% 1/4W 1206

Vishay Dale

RFQ