

NM27C512Q150



Fairchild/ON Semiconductor

IC EPROM UV 512KBIT 150NS 28CDIP

Contains lead / RoHS non-compliant

Integrated Circuits (ICs)

[NM27C512Q150.pdf](#)

Buy Now

We can supply NM27C512Q150, use the request quote form to request NM27C512Q150 price and lead time. Zeano is a professional electronic components distributor. With 3+ Million line items of available electronic components can ship in short lead-time, over 250 thousand part numbers of electronic components in stock for immediately delivery, which may include part number NM27C512Q150. The price and lead time for NM27C512Q150 depending on the quantity required and warehouse location. Contact us and our sales representative will provide you price. We look forward to work with you.

Shopping Process

1

Confirm the product

2

submit the order

3

payment

4

wait for delivery

5

receive the goods

Specifications

Voltage - Supply:	4.5 V ~ 5.5 V
Supplier Device Package:	28-CDIP
Speed:	150ns
Series:	-
Packaging:	Tube
Package / Case:	28-CDIP (0.600", 15.24mm) Window
Operating Temperature:	0°C ~ 70°C (TA)
Memory Type:	Non-Volatile
Memory Size:	512Kb (64K x 8)
Memory Format:	EPROM
Interface:	Parallel

Related products



NM27C512Q-250
NS

RFQ



NM27C512Q120
IC EPROM UV 512KBIT 120NS 28CDIP
[Fairchild/ON Semiconductor](#)

RFQ



NM27C512Q-150
NSC

RFQ



NM27C512QE-150
NSC

RFQ



NM27C512Q-120
FSC

RFQ



NM27C512Q200
NSC

RFQ



NM27C512QE150
IC EPROM UV 512KBIT 150NS 28CDIP
[Fairchild/ON Semiconductor](#)

RFQ



NM27C512Q-90
NSC

RFQ



NM27C512QE200
NS

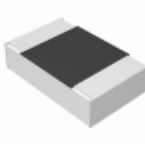
RFQ



NM27C512QM-150
NSC

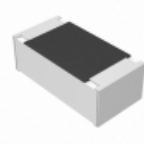
RFQ

Guess You May Looking For



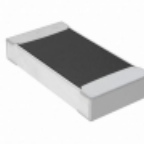
ERA-6AEB204V
RES SMD 200K OHM 0.1% 1/8W 0805
[Panasonic Electronic Components](#)

RFQ



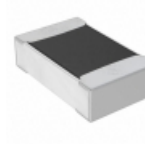
ERA-2AEB1131X
RES SMD 1.13KOHM 0.1% 1/16W 0402
[Panasonic Electronic Components](#)

RFQ



CSR1206FKR300
RES SMD 0.3 OHM 1% 1/2W 1206
[Stackpole Electronics Inc.](#)

RFQ



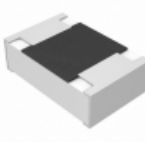
RNCP0805FTD909R
RES SMD 909 OHM 1% 1/4W 0805
[Stackpole Electronics Inc.](#)

RFQ



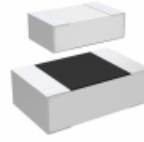
RC0402FR-073R32L
RES SMD 3.32 OHM 1% 1/16W 0402
[Yageo](#)

RFQ



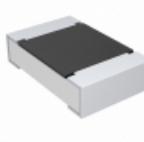
ERJ-PB6B1821V
RES SMD 1.82K OHM 0.1% 1/4W 0805
[Panasonic Electronic Components](#)

RFQ



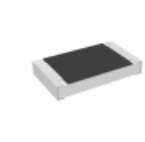
CRGH0805J910K
RES SMD 910K OHM 5% 1/3W 0805
[TE Connectivity Passive Product](#)

RFQ



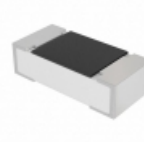
CRCW0805787KFKEB
RES SMD 787K OHM 1% 1/8W 0805
[Vishay Dale](#)

RFQ



RCS040276K8FKED
RES SMD 76.8K OHM 1% 1/5W 0402
[Vishay Dale](#)

RFQ



CRCW0402261RFKEDHP
RES SMD 261 OHM 1% 1/5W 0402
[Vishay Dale](#)

RFQ