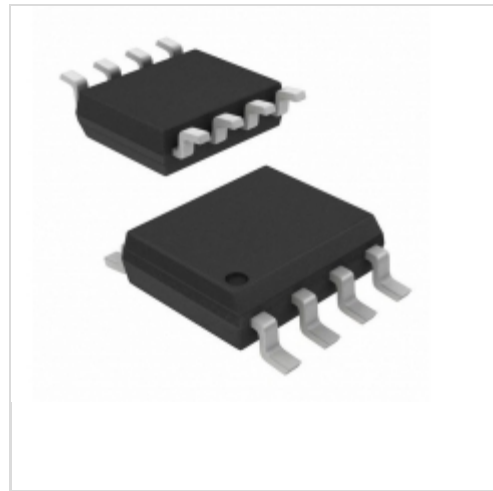


**ICE2PCS05GXUMA1**



**International Rectifier (Infineon Technologies)**

IC PFC CONTROLLER CCM 8DSO  
Lead free / RoHS Compliant  
Integrated Circuits (ICs)

[ICE2PCS05GXUMA1.pdf](#)

**Buy Now**

**Out Stock**

**0 pcs**

Minimum:1

Multiples:100

Manufacturer lead time 10 weeks

Images are for reference only.

See Product Specifications for product details.

If you are interested to buy ICE2PCS05GXUMA1,Just Email us.

Sales@zeanoit.com

our sales team will reply you within 24 hours

Shopping Process

**1**

**Confirm the product**

**2**

**submit the order**

**3**

**payment**

**4**

**wait for delivery**

**5**

**receive the goods**

Specifications

<b>Voltage - Supply:</b>	11 V ~ 25 V
<b>Supplier Device Package:</b>	PG-DSO-8
<b>Series:</b>	-
<b>Packaging:</b>	Tape & Reel (TR)
<b>Package / Case:</b>	8-SOIC (0.154", 3.90mm Width)
<b>Operating Temperature:</b>	-40°C ~ 125°C
<b>Mounting Type:</b>	Surface Mount
<b>Mode:</b>	Continuous Conduction (CCM)
<b>Frequency - Switching:</b>	Adjustable
<b>Current - Startup:</b>	450µA

Related products



**ICE2PCS04GXUMA1**  
IC PFC CONTROLLER CCM 8DSO  
[Infineon Technologies](#)

RFQ



**ICE2PCS06GXUMA1**  
IC PFC CTRLR CCM 8DSO  
[Infineon Technologies](#)

RFQ



**ICE2PCS06HKLA1**  
IC PFC CTRLR CCM 8DIP  
[Infineon Technologies](#)

RFQ



**ICE2PCS06**  
INFINEON

RFQ



**ICE2PCS06XKLA1**  
IC PFC CTRLR CCM 8DIP  
[Infineon Technologies](#)

RFQ



**ICE2PCS04HKLA1**  
IC PFC CONTROLLER CCM 8DIP  
[Infineon Technologies](#)

RFQ



**ICE2PCS06G**  
INF

RFQ



**ICE2PCS05G**  
INFINEON

RFQ



**ICE2PCS04XKLA1**  
IC PFC CONTROLLER CCM 8DIP  
[Infineon Technologies](#)

RFQ



**ICE2PCS05**  
INFINEON

RFQ

Guess You May Looking For



**RG2012V-1401-P-T1**  
RES SMD 1.4K OHM 0.02% 1/8W 0805  
[Susumu](#)

RFQ



**RG3216V-3240-B-T5**  
RES SMD 324 OHM 0.1% 1/4W 1206  
[Susumu](#)

RFQ



**WSLP5931L3000FEA**  
RES SMD 0.0003 OHM 1% 10W 5931  
[Vishay Dale](#)

RFQ



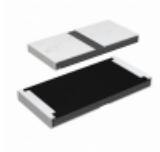
**RCP0603W1K20GS2**  
RES SMD 1.2K OHM 2% 3.9W 0603  
[Vishay Dale](#)

RFQ



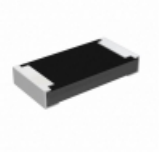
**RCP2512B1K30GEB**  
RES SMD 1.3K OHM 2% 22W 2512  
[Vishay Dale](#)

RFQ



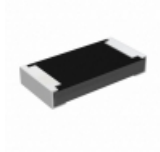
**RCP2512W270RJS3**  
RES SMD 270 OHM 5% 22W 2512  
[Vishay Dale](#)

RFQ



**RCP1206B18R0JEC**  
RES SMD 18 OHM 5% 11W 1206  
[Vishay Dale](#)

RFQ



**RCP1206B33R0GEC**  
RES SMD 33 OHM 2% 11W 1206  
[Vishay Dale](#)

RFQ



**RW0S6BBR240FE**  
RES SMD 0.24 OHM 1% 0.6W 2010  
[Ohmite](#)

RFQ



**M55342H12B2E32RT5**  
RES SMD 2.32K OHM 1% 1/10W 0603  
[Vishay Dale](#)

RFQ